



# THE CLOISTER

Marylebone Square, Marylebone

£7,695,000 Leasehold



## The Cloister

106 Great Portland Street, London, W1W 6PF  
T. +44 (0)20 7436 6210 F. +44 (0)20 7436 7261  
E. [lettings@thecloisteruk.com](mailto:lettings@thecloisteruk.com) W. [www.thecloisteruk.com](http://www.thecloisteruk.com)



# Marylebone Square, Marylebone

£7,695,000 Leasehold

Three bedroom apartment with study available on the first floor.

Marylebone Square is an eagerly awaited six storey development of 54 apartments with secure underground parking and 24 hour concierge, centrally situated within the village-like intimacy of Marylebone, a short distance from the eclectic amenities of Marylebone High Street. Practical completion of this prestigious project is anticipated for quarter four of 2021.

Located within the Portman Estate originally acquired in 1532 by Sir William Portman, Lord Chief Justice to Henry VIII, Marylebone has a rich heritage of illustrious residents from the Beatles, the pre-Raphaelite artist Dante Rossetti, to the literary greats Charles Dickens and Virginia Woolf, and national heroine Florence Nightingale. A contemporary interpretation of a classic London mansion block, the building has been intuitively designed with subtle modernity, creating an air of refined elegance with an Art Deco feel incorporating a brass and ceramic façade, floor to ceiling windows and an expansive five floor central glass apex roofed atrium with plants and elliptical lily pond, giving all apartments a bright and airy dual aspect.

Marylebone Square complies with a 10 year build warranty by NHBC.

There is easy access from Marylebone Square to Paddington, Marylebone and Baker Street stations and also Bond Street underground station providing quick access to Heathrow via the Elizabeth line.

---

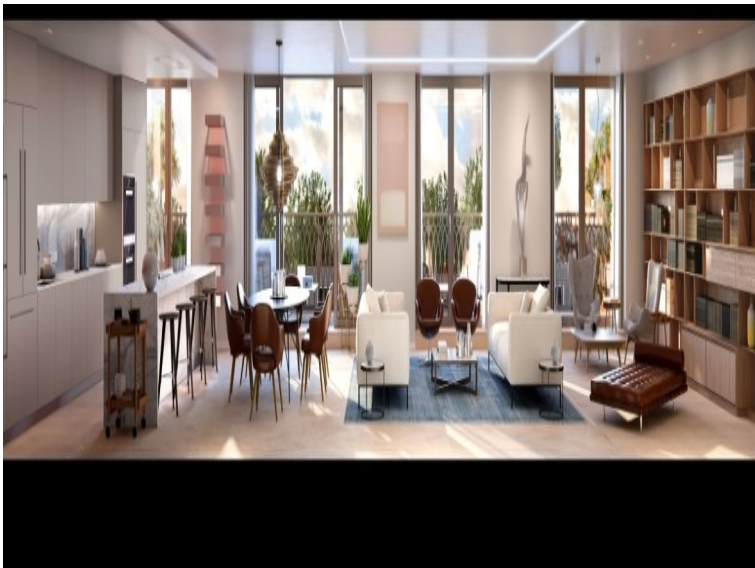
## The Cloister

106 Great Portland Street, London, W1W 6PF  
T. +44 (0)20 7436 6210 F. +44 (0)20 7436 7261  
E. [lettings@thecloisteruk.com](mailto:lettings@thecloisteruk.com) W. [www.thecloisteruk.com](http://www.thecloisteruk.com)



# Marylebone Square, Marylebone

£7,695,000 Leasehold



## The Cloister

106 Great Portland Street, London, W1W 6PF  
T. +44 (0)20 7436 6210 F. +44 (0)20 7436 7261  
E. [lettings@thecloisteruk.com](mailto:lettings@thecloisteruk.com) W. [www.thecloisteruk.com](http://www.thecloisteruk.com)





# Marylebone Square, Marylebone

£7,695,000 Leasehold



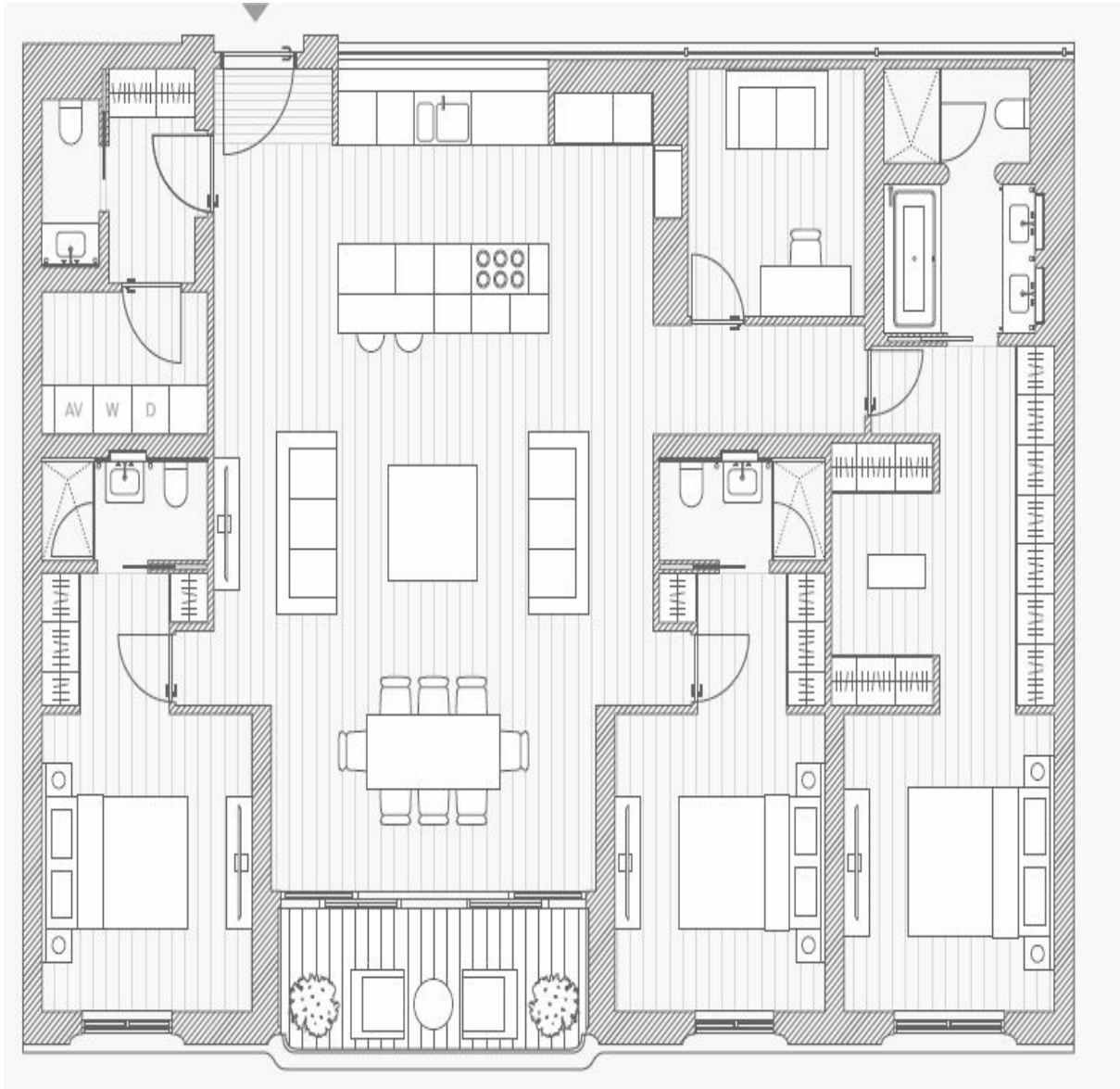
## The Cloister

106 Great Portland Street, London, W1W 6PF  
T. +44 (0)20 7436 6210 F. +44 (0)20 7436 7261  
E. [lettings@thecloisteruk.com](mailto:lettings@thecloisteruk.com) W. [www.thecloisteruk.com](http://www.thecloisteruk.com)



# Marylebone Square, Marylebone

£7,695,000 Leasehold



## Important Notices:

Particulars: These particulars are not an offer or contract, nor part of one. You should not rely on statements by The Cloister in the particulars or by word of mouth or in writing ("information") as being factually accurate about the property, its condition or its value. Neither The Cloister nor any joint agent has any authority to make any representations about the property, and accordingly any information given is entirely without responsibility on the part of the agents, seller(s), lessor(s) or landlord(s). Any areas, measurements or distances are approximate. The text, photographs and plans are for guidance only and are not necessarily comprehensive. Regulations etc: Any reference to alterations to, or use of, any part of the property does not mean that any necessary planning, building regulations or other consent has been obtained. A buyer, lessee or tenant must find out by inspection or in other ways that these matters have been properly dealt with and that all information is correct. All items usually known as tenant's fixtures and fittings whether mentioned or not in these particulars are excl

## The Cloister

106 Great Portland Street, London, W1W 6PF  
T. +44 (0)20 7436 6210 F. +44 (0)20 7436 7261  
E. [lettings@thecloisteruk.com](mailto:lettings@thecloisteruk.com) W. [www.thecloisteruk.com](http://www.thecloisteruk.com)

