



THE CLOISTER

Chappell Lofts, Chalk Farm

£4,650,000 Leasehold



The Cloister

106 Great Portland Street, London, W1W 6PF
T. +44 (0)20 7436 6210 F. +44 (0)20 7436 7261
E. lettings@thecloisteruk.com W. www.thecloisteruk.com



Chappell Lofts, Chalk Farm

£4,650,000 Leasehold

This stunning development of Chappell Lofts boasts over 2,890 square foot of space exquisitely located in the heart of Camden.

The property offers three double bedrooms with ensembles, an enormous reception area, as well as a large balcony. The property further benefits from a spectacular Club Lounge providing residents with a private VIP entertainment venue for relaxation and entertaining.

Belmont Street, in the heart of Chalk Farm and Camden. Chappell lofts is located at the centre North West London's most vibrant districts, with Primrose Hill Village and the serenity of Regent's Park on your doorstep.

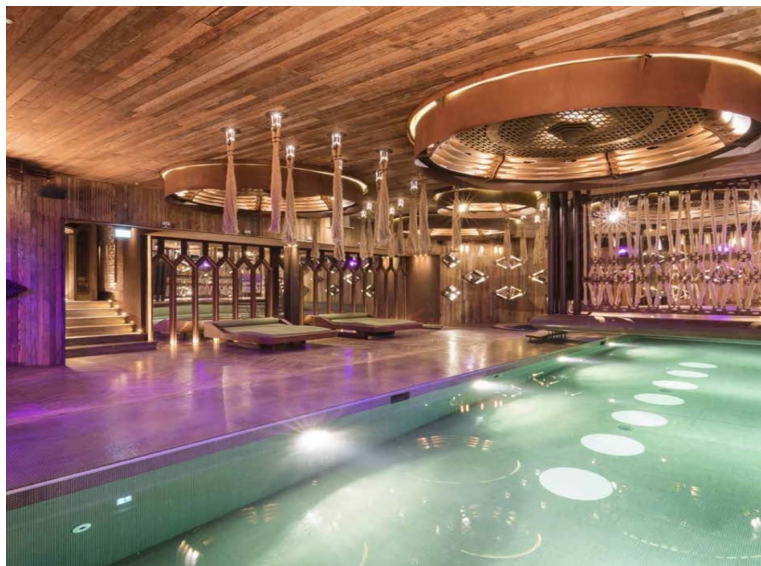
The Cloister

106 Great Portland Street, London, W1W 6PF
T. +44 (0)20 7436 6210 F. +44 (0)20 7436 7261
E. lettings@thecloisteruk.com W. www.thecloisteruk.com



Chappell Lofts, Chalk Farm

£4,650,000 Leasehold



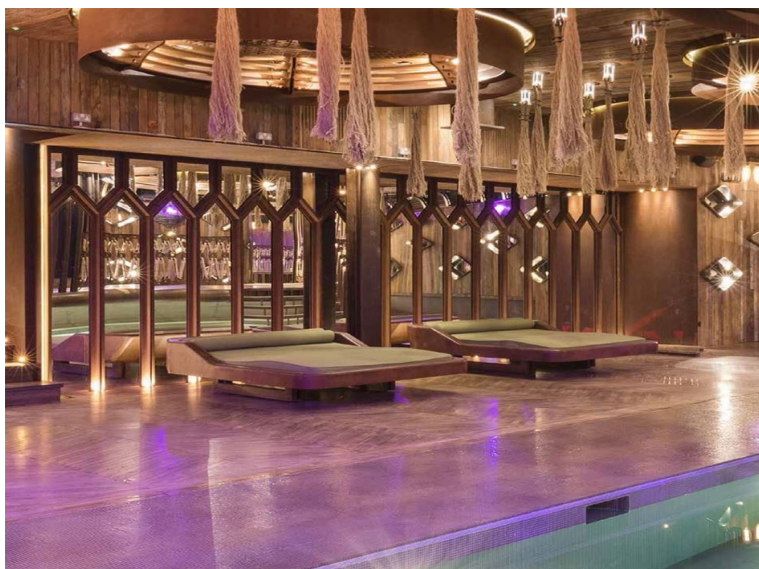
The Cloister

106 Great Portland Street, London, W1W 6PF
T. +44 (0)20 7436 6210 F. +44 (0)20 7436 7261
E. lettings@thecloisteruk.com W. www.thecloisteruk.com



Chappell Lofts, Chalk Farm

£4,650,000 Leasehold



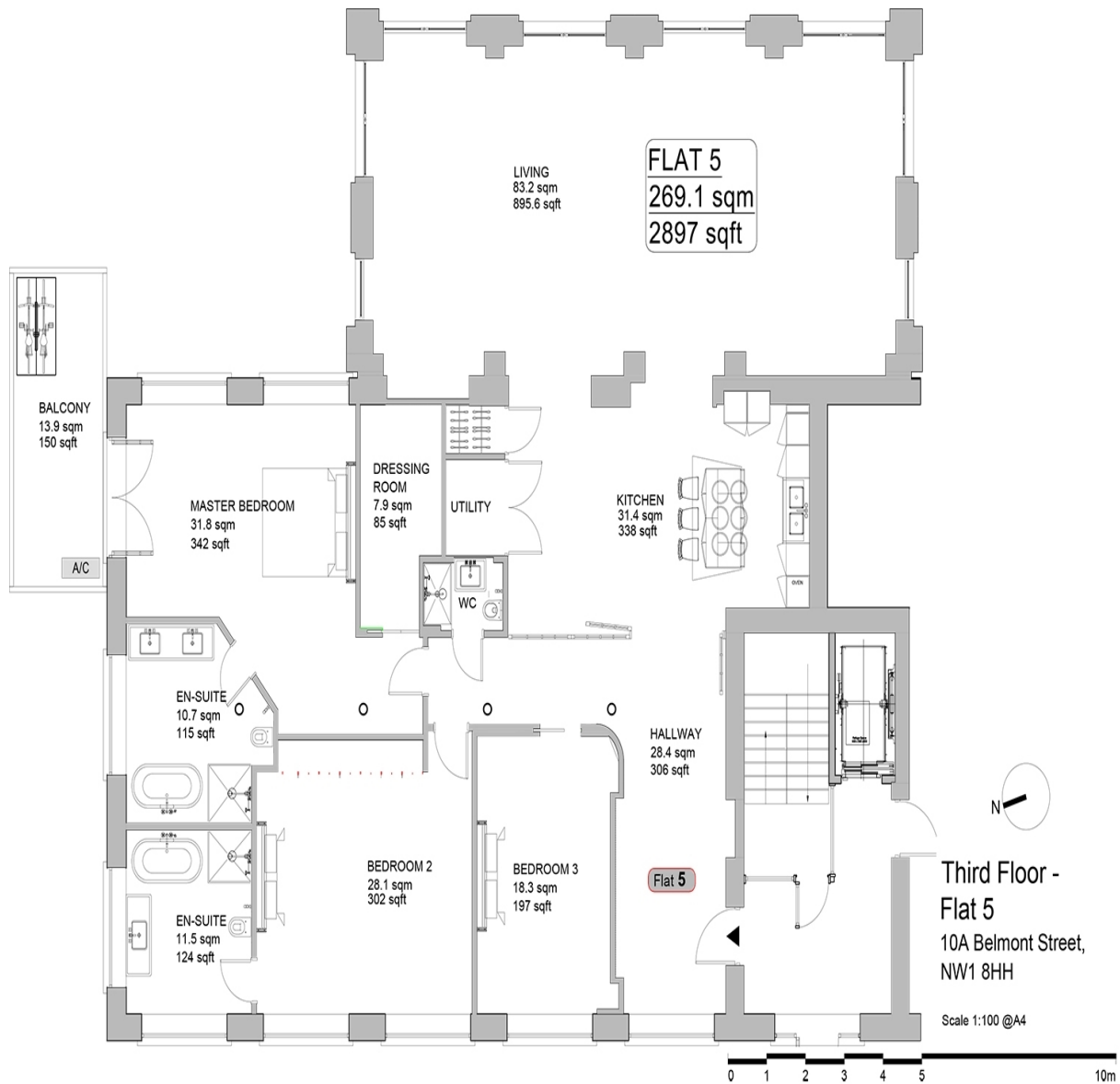
The Cloister

106 Great Portland Street, London, W1W 6PF
T. +44 (0)20 7436 6210 F. +44 (0)20 7436 7261
E. lettings@thecloisteruk.com W. www.thecloisteruk.com



Chappell Lofts, Chalk Farm

£4,650,000 Leasehold



Important Notices:

Particulars: These particulars are not an offer or contract, nor part of one. You should not rely on statements by The Cloister in the particulars or by word of mouth or in writing ("information") as being factually accurate about the property, its condition or its value. Neither The Cloister nor any joint agent has any authority to make any representations about the property, and accordingly any information given is entirely without responsibility on the part of the agents, seller(s), lessor(s) or landlord(s). Any areas, measurements or distances are approximate. The text, photographs and plans are for guidance only and are not necessarily comprehensive. Regulations etc: Any reference to alterations to, or use of, any part of the property does not mean that any necessary planning, building regulations or other consent has been obtained. A buyer, lessee or tenant must find out by inspection or in other ways that these matters have been properly dealt with and that all information is correct. All items usually known as tenant's fixtures and fittings whether mentioned or not in these particulars are excl

The Cloister

106 Great Portland Street, London, W1W 6PF
T. +44 (0)20 7436 6210 F. +44 (0)20 7436 7261
E. lettings@thecloisteruk.com W. www.thecloisteruk.com

