

Academy Gardens

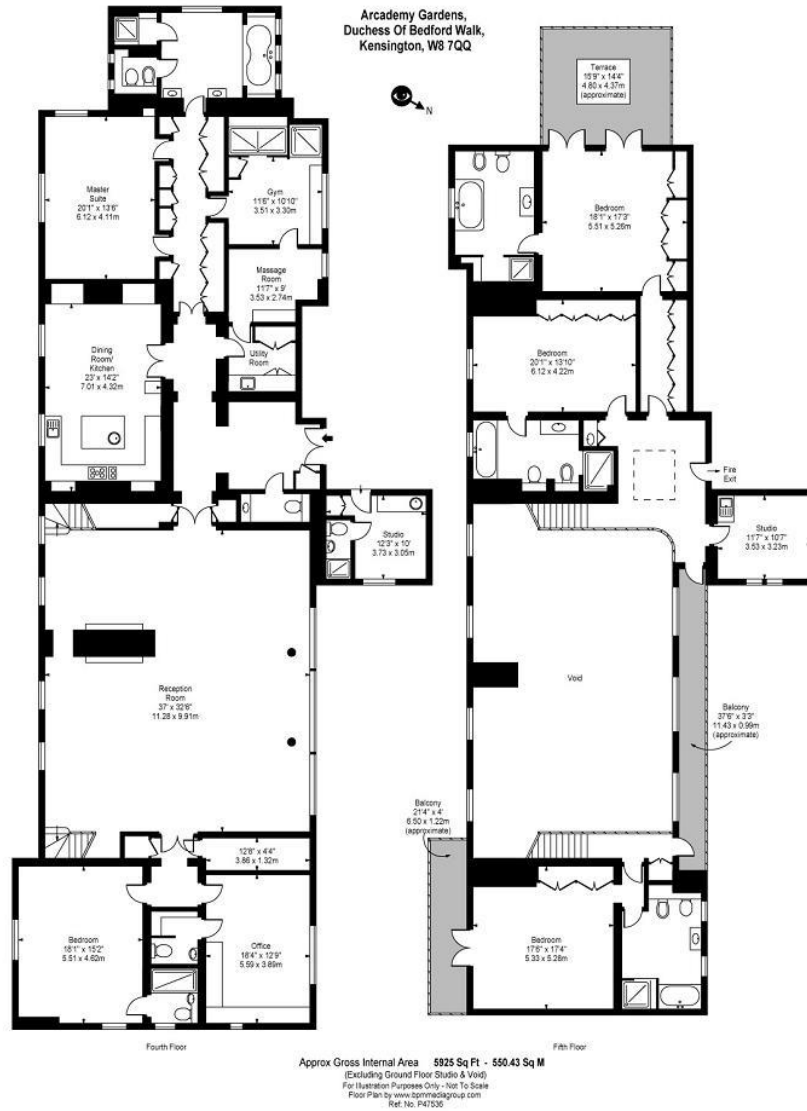
Duchess of Bedfords Walk, W8

£13,500 per week

(£58,500 pcm)

An impressive interior designed duplex apartment situated in the south elevation within one of Kensington's most prestigious developments. Occupying 6000 sqft of luxury living space this apartment further benefits from secure underground parking, communal gardens, swimming pool, private gym, and an exceptional concierge service.

CHESTERTONS



Tenure: Long Let, Minimum term 6 months

Furnished

Additional tenant charges apply (fees apply to non-AST tenancies only)

Tenancy Agreement Fee: £300

References per Tenant/Guarantor: £60

Inventory check (approx. £100 – £250 inc. VAT)

chestertons.com/property-to-rent/applicable-fees

Energy Efficiency Rating		Current	Potential
Very energy efficient - lower running costs			
(92+)	A		
(81-91)	B		
(69-80)	C		
(55-68)	D	67	71
(38-54)	E		
(21-38)	F		
(1-20)	G		
Not energy efficient - higher running costs			
England, Scotland & Wales		EU Directive 2002/91/EC	

Chestertons Kensington Lettings

116 Kensington High Street

Kensington

London

W8 7RW

lettings.kensington@chestertons.com

02079377260

chestertons.com



This paper is
100% recyclable

Chesterton Global Ltd trading as Chestertons for themselves and for the vendor of this property whose agents they are, give notice that (i) these particulars do not constitute any part of an offer or contract, (ii) all statements contained within these particulars are made without responsibility on the part of Chestertons or the vendor, (iii) whilst made in good faith, none of the statements contained within these particulars are to be relied upon as a statement or representation of fact, (iv) any intending purchasers must satisfy themselves by inspection or otherwise as to the correctness of each of the statements contained within these particulars, (v) the vendor does not make or give either Chestertons or any person in their employment any authority to make or give representation or warranty whatsoever in relation to this property. Wide angle lenses may be used. ©Copyright Chestertons | Chesterton Global Ltd | Registered Office 40 Connaught Street, Hyde Park, London W2 2AB Registered Company Number 05334580.