



# Cheniston Gardens

Kensington, W8

£8,500 per month  
(£1,961.54 per week)

EXCLUSIVE TO CHESTERTONS: Offering spectacular views is this stunning 3 bedroom penthouse apartment has been finished to the highest of standards. Boasting double reception, well laid-out bedrooms, 3 bathrooms and stylish kitchen. Porter and a lift.

**CHESTERTONS**



# Cheniston Gardens

## Kensington, W8

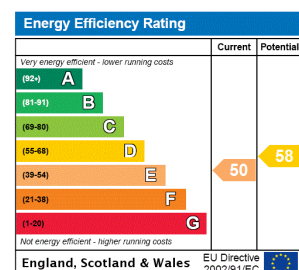
- Stunning newly refurbished Penthouse Apartment
- 3 Double Bedrooms & 3 Bathrooms (2 En-suite)
- Stunning views from the balcony
- Porter-on-site



EXCLUSIVE TO CHESTERTONS: Offering spectacular views and excellent space is this truly stunning penthouse apartment finished to the highest standards.

The property boasts a bright and airy double reception room that has two sets of French doors leading out to the balconies. Stylish separate kitchen offers excellent worktop and storage space and also has a small balcony ideal for BBQ's. All bedrooms are well laid-out, with a master bedroom offering plenty built-in storage space and stylish en-suite bathroom, second bedroom benefits of en-suite bathroom also and a third bedroom is smaller double bedroom. There is a further main bathroom serving third bedroom and ample

**Minimum Term:** months  
**Deposit Required:** £11,769.23  
**Local Authority:**  
**Council Tax Band:** G  
**EPC Rating:** E  
**Unfurnished**

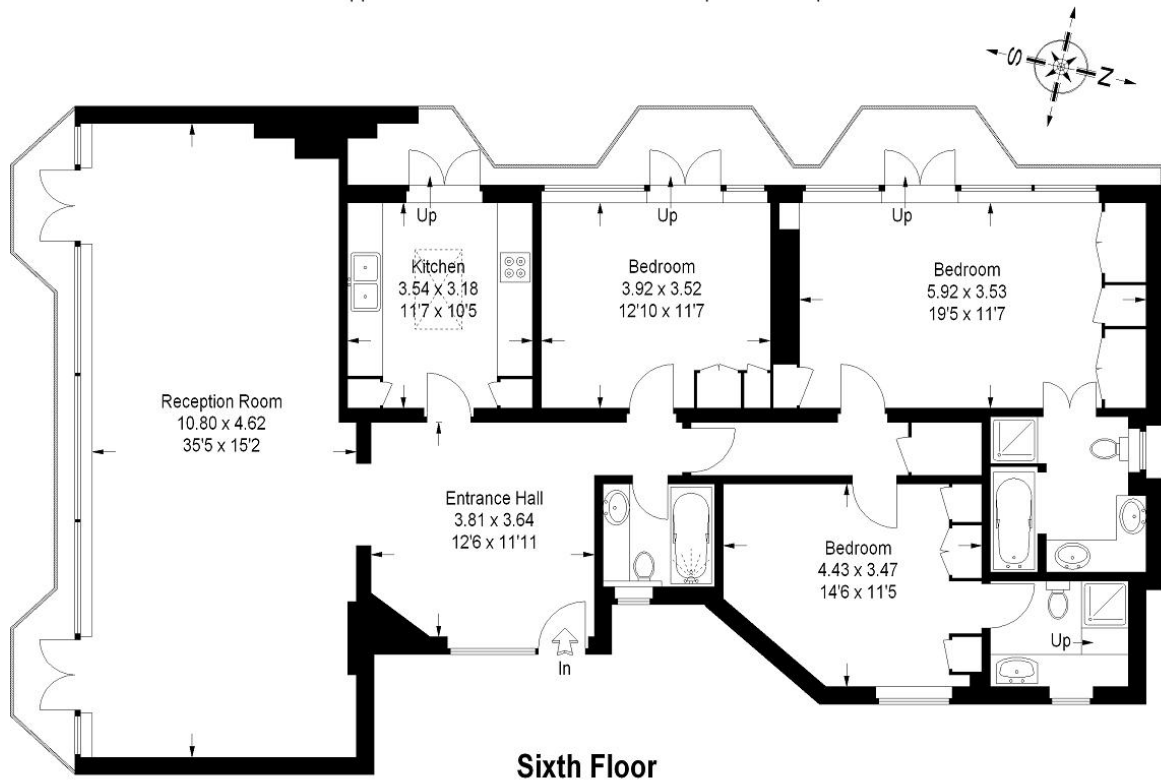


### Chestertons Kensington Lettings

116 Kensington High Street  
 Kensington  
 London  
 W8 7RW  
[kensingtonlettingsusers@chestertons.co.uk](mailto:kensingtonlettingsusers@chestertons.co.uk)  
 02079377260  
[chestertons.co.uk](http://chestertons.co.uk)

Additional tenant charges apply (fees apply to non-AST tenancies only)  
 Tenancy Agreement Fee: £300  
 References per Tenant/Guarantor: £60  
 Inventory check (approx. £100 – £250 inc. VAT)  
[chestertons.co.uk/property-to-rent/applicable-fees](http://chestertons.co.uk/property-to-rent/applicable-fees)

Approximate Gross Internal Area = 152 sq m / 1636 sq ft



FLOORPLANZ © 2013 0845 6344080 Ref 117250

This plan is for layout guidance only. Not drawn to scale unless stated. Windows & door openings are approximate. Whilst every care is taken in the preparation of this plan, please check all dimensions, shapes & compass bearings before making any decisions reliant upon them.

