



# St Mary Abbots Terrace

London, W14

£6,250 per month  
(£1,442.31 per week)

Refurbished three bedroom apartment is situated on the sixth floor of a well run building in Holland Park with lift access. The apartment boasts far reaching views a wonderfully bright double reception room and modern finishings.

**CHESTERTONS**



# St Mary Abbots Terrace

London, W14

•

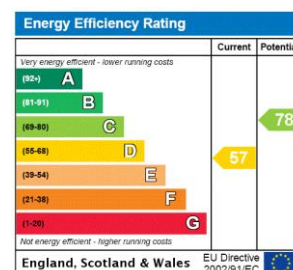


Refurbished three bedroom apartment situated on the sixth floor of a well run building in Holland Park with lift access. The apartment boasts far reaching views a wonderfully bright double reception room and modern finishings.

Well equip modern kitchen with integrated appliances. Three double bedrooms, principle bedroom with en suite bathroom and ample storage. Family bathroom. The property benefits from tiled floors throughout.

Abbots House is conveniently located for shopping, entertainment and transport facilities of Kensington High Street and Holland Park

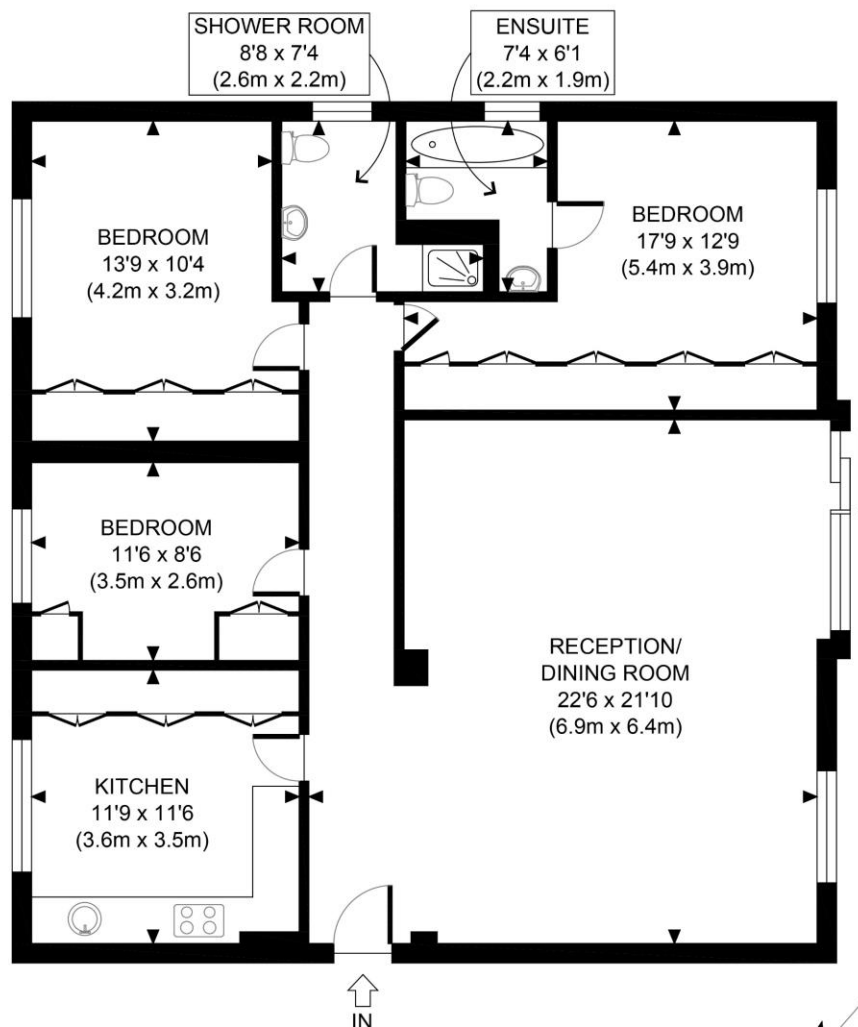
**Minimum Term:** 6 months  
**Deposit Required:** £8,653.85  
**Local Authority:** Royal Borough of Kensington & Chelsea  
**Council Tax Band:** G  
**EPC Rating:** D  
**Unfurnished**




### *Chestertons Kensington Lettings*

116 Kensington High Street  
 Kensington  
 London  
 W8 7RW  
[kensingtonlettingsusers@chestertons.co.uk](mailto:kensingtonlettingsusers@chestertons.co.uk)  
 02079377260  
[chestertons.co.uk](http://chestertons.co.uk)

Additional tenant charges apply (fees apply to non-AST tenancies only)  
 Tenancy Agreement Fee: £300  
 References per Tenant/Guarantor: £60  
 Inventory check (approx. £100 – £250 inc. VAT)  
[chestertons.co.uk/property-to-rent/applicable-fees](http://chestertons.co.uk/property-to-rent/applicable-fees)



SIXTH FLOOR  
GROSS INTERNAL  
FLOOR AREA 1198 SQ FT

<p>APPROX. GROSS INTERNAL FLOOR AREA 1198 SQ FT / 111 SQM</p> <p>Disclaimer: Floor plan measurements are approximate and are for illustrative purposes only. While we do not doubt the floor plan accuracy and completeness, you or your advisors should conduct a careful, independent investigation of the property in respect of monetary valuation</p>	<p>Abbots House W14</p>
	<p>date 02/09/20</p> <p><b>photoplan</b> </p>