



Phillimore Place  
Kensington, W8

CHESTERTONS







An immaculate interior designed three-bedroom apartment. Arranged over the ground & lower ground floor of this beautiful and period building.

The apartment is offered on an unfurnished basis. Property comprises three double bedrooms, three bathrooms, bright double reception room. Separate kitchen and private garden.

Phillimore Place is ideally located moments from the many excellent amenities found on High Street Kensington as well as being within close walking distance of Kensington, Notting Hill and Holland Park.

- Spacious & airy apartment
- Two double bedrooms
- Located moments from amenities of Kensington High Street
- Amazing views of the roof tops of Kensington
- Private Garden

**£3,250 per week (£14,083.33 pcm)**

Additional tenant charges apply (fees apply to non-AST tenancies only)

Tenancy Agreement Fee: £300

References per Tenant/Guarantor: £60

Inventory check (approx. £100 – £250 inc. VAT)

[chestertons.co.uk/property-to-rent/applicable-fees](http://chestertons.co.uk/property-to-rent/applicable-fees)

Energy Efficiency Rating		Current	Potential
Very energy efficient - lower running costs	A		
Energy efficient - lower running costs	B		
Decent energy efficiency - lower running costs	C		
Below average energy efficiency - higher running costs	D		
Low energy efficiency - higher running costs	E		
Very low energy efficiency - higher running costs	F		
Least energy efficient - highest running costs	G		
EU Directive 2002/91/EC		53	74
England, Scotland & Wales			

**Minimum Term:** 12 months  
**Deposit Required:** £16,250.00  
**Local Authority:** Royal Borough of Kensington and Chelsea  
**Council Tax Band:** H  
**EPC Rating:** E  
**Unfurnished**

**Chestertons Kensington Lettings**

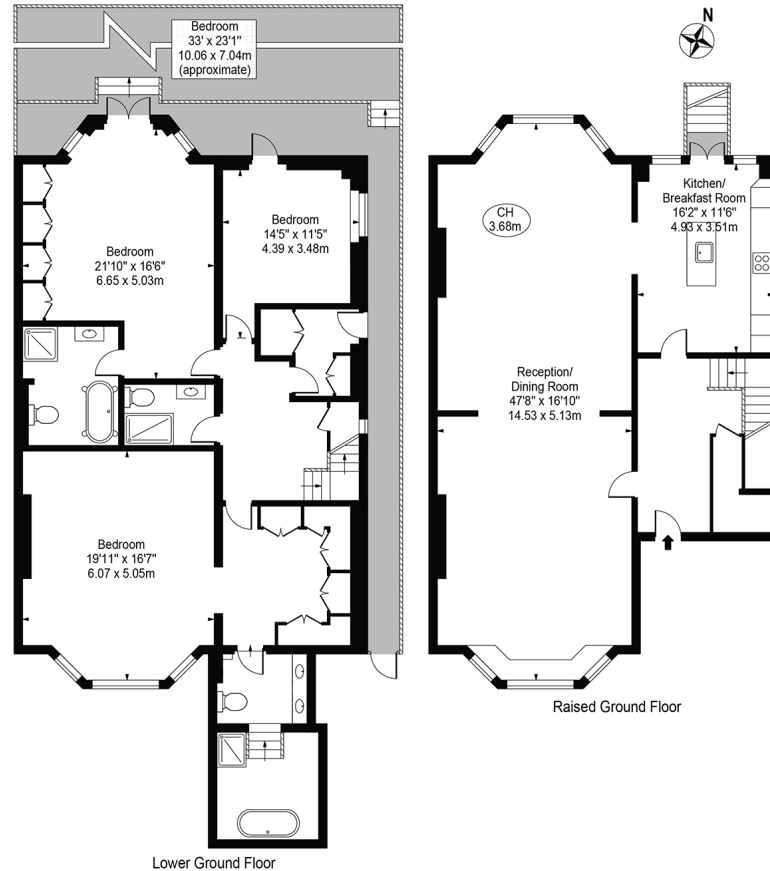
116 Kensington High Street  
 Kensington  
 London  
 W8 7RW

[kensingtonlettingsusers@chestertons.co.uk](mailto:kensingtonlettingsusers@chestertons.co.uk)  
 02079377260



## Phillimore Place

Approx. Gross Internal Area 2529 Sq Ft - 234.95 Sq M



For Illustration Purposes Only - Not To Scale

This floor plan should be used as a general outline for guidance only and does not constitute in whole or in part an offer or contract. Any intending purchaser or lessee should satisfy themselves by inspection, searches, enquiries and full survey as to the correctness of each statement. Any areas, measurements or distances quoted are approximate and should not be used to value a property or be the basis of any sale or let.

Chesterton UK Services Limited trading as Chestertons for themselves and for the vendor of this property whose agents they are, give notice that (i) these particulars do not constitute any part of an offer or contract, (ii) all statements contained within these particulars are made without responsibility on the part of Chestertons or the vendor, (iii) whilst made in good faith, none of the statements contained within these particulars are to be relied upon as a statement or representation of fact, (iv) any intending purchasers must satisfy themselves by inspection or otherwise as to the correctness of each of the statements contained within these particulars, (v) the vendor does not make or give either Chestertons or any person in their employment any authority to make or give representation or warranty whatsoever in relation to this property. Wide angle lenses may be used. ©Copyright Chestertons | Chesterton Global Ltd | Registered Office 40 Connaught Street, Hyde Park, London W2 2AB Registered Company Number 05334580.



This paper is  
100% recyclable