



St Mary Abbots Court

Warwick Gardens, W14

£8,750 per month
(£2,019.23 per week)

Refurbished contemporary apartment with three generous sized bedrooms, three receptions, state of the art kitchen and a luxurious master bedroom suite.

CHESTERTONS



St Mary Abbots Court

Warwick Gardens, W14

- Spacious Three Bedroom Apartment
- Three Reception Rooms
- Two Bathrooms
- Newly Refurbished



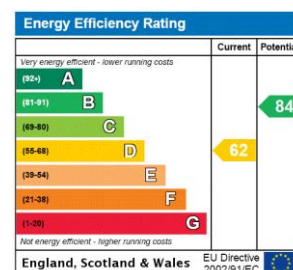
A well-maintained three-bedroom lateral apartment located in the sought-after St Mary Abbots Court.

The property comprises three bedrooms, three bathrooms, and an additional guest WC. It offers generous living space alongside a modern eat-in kitchen. The apartment benefits from ample storage throughout and is available on an unfurnished basis.

Additional features include a 24-hour porter service and lift access.

St Mary Abbots Court is situated within the Royal Borough of Kensington and Chelsea and is ideally located for the excellent

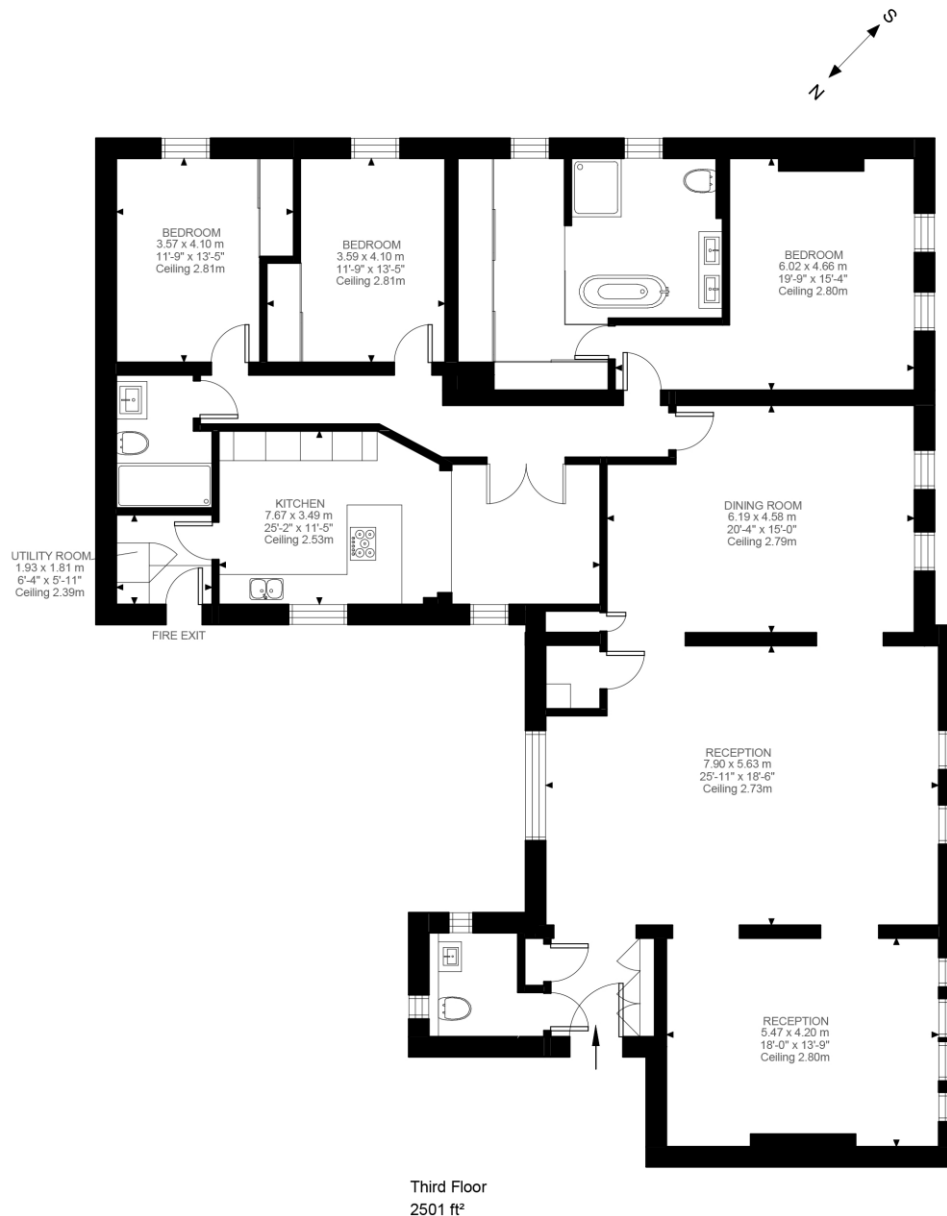
Minimum Term: 6 months
Deposit Required: £10,096.15
Local Authority: Royal Borough of Kensington and Chelsea
Council Tax Band:
EPC Rating: D
Unfurnished



Chestertons Kensington Lettings

116 Kensington High Street
 Kensington
 London
 W8 7RW
kensingtonlettingsusers@chestertons.co.uk
 02079377260
[chestertons.co.uk](https://www.chestertons.co.uk)

Additional tenant charges apply (fees apply to non-AST tenancies only)
 Tenancy Agreement Fee: £300
 References per Tenant/Guarantor: £60
 Inventory check (approx. £100 – £250 inc. VAT)
[chestertons.co.uk/property-to-rent/applicable-fees](https://www.chestertons.co.uk/property-to-rent/applicable-fees)



St Mary Abbots Court, W14

Approximate Gross Internal Area

232.35 SQ.M / 2501 SQ.FT

Illustration for identification purposes only. Not to scale.
Floor Plan Drawn According To RICS Guidelines.



This paper is
100% recyclable