



Sinclair Road

London, W14

£2,100 per month
(£484.62 per week)

Modern one-bedroom flat with spacious bedroom, sleek bathroom and open-plan kitchen opening to a private garden. Wood floors throughout. Located on quiet Sinclair Rd, close to shops and transport at Shepherd's Bush, Olympia and Hammersmith

CHESTERTONS



Sinclair Road

London, W14

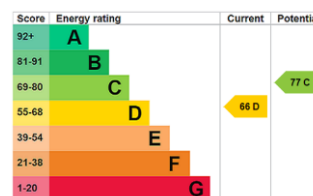
- one bedroom
- private garden
- furnished



This well-situated one-bedroom flat features a generously sized double bedroom, a contemporary bathroom, and a bright open-plan kitchen/reception area that opens onto an exceptionally large private garden. The home is enhanced by wooden flooring throughout.

Located on Sinclair Road, quiet residential street in the heart of Brook Green, the property is moments from local shops, cafés, restaurants, and the extensive amenities of Westfield and Kensington High Street. Excellent transport connections are available nearby at Shepherd's Bush, Kensington Olympia and Hammersmith.

Minimum Term: 12 months
Deposit Required: £2,423.08
Local Authority: Hammersmith & Fulham
Council Tax Band: C
EPC Rating: D
Furnished, Part Furnished



Chestertons Kensington Lettings

116 Kensington High Street
 Kensington
 London
 W8 7RW
kensingtonlettingsusers@chestertons.co.uk
 02079377260
chestertons.co.uk

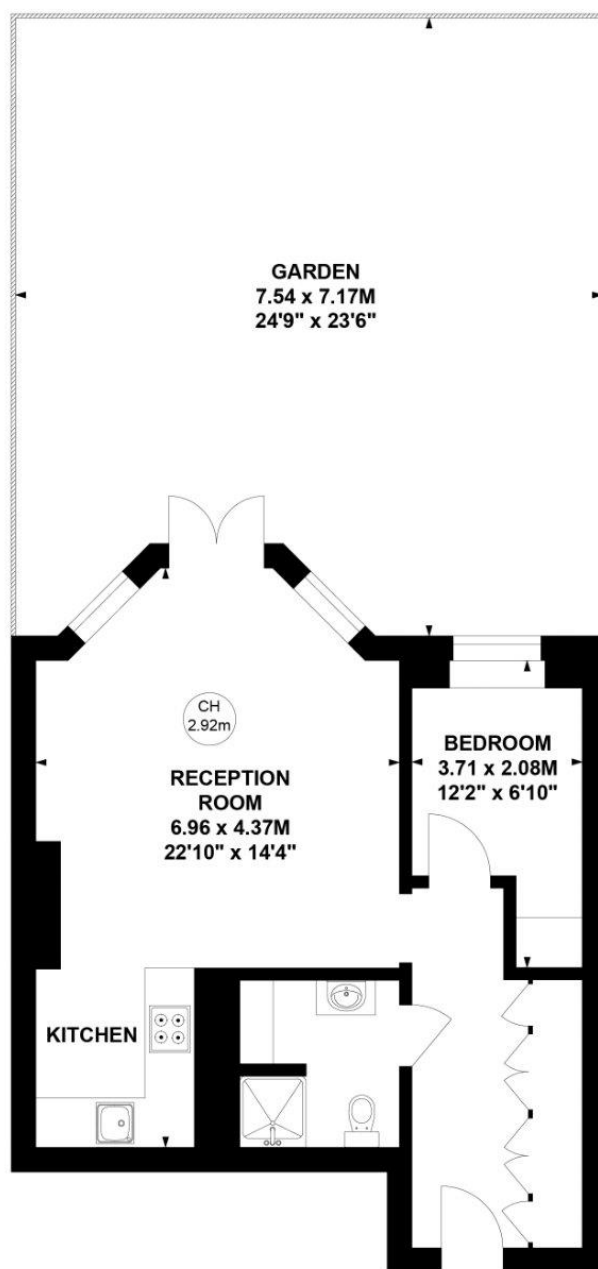
Additional tenant charges apply (fees apply to non-AST tenancies only)
 Tenancy Agreement Fee: £300
 References per Tenant/Guarantor: £60
 Inventory check (approx. £100 – £250 inc. VAT)
chestertons.co.uk/property-to-rent/applicable-fees

Sinclair Road, W14

Approximate gross internal area

43.5 sq m / 468 sq ft

Key :
CH - Ceiling Height



Lower Ground Floor

This plan is not to scale and must be used as layout guidance only. All measurements and areas are approximate and should not be relied upon to provide accurate information. This plan must not be relied upon when making property valuations, design considerations or any other such relevant decisions. We accept no responsibility or liability (whether in contract, tort or otherwise) in relation to any loss whatsoever arising from or in connection with any use of this plan or the adequacy, accuracy or completeness of it or any information within it.

