



Holland Park Mews

London, W11

£5,750 per month
(£1,326.92 per week)

Located in prestigious Holland Park Mews, this property features two double bedrooms, two bathrooms, a private garage, an open-plan reception room, and a modern kitchen. Just a short walk from Holland Park, Notting Hill, and Kensington.

CHESTERTONS



Holland Park Mews

London, W11

- Two Bedroom
- Two Bathroom
- Mews House
- Garage
- Some photos are CGI

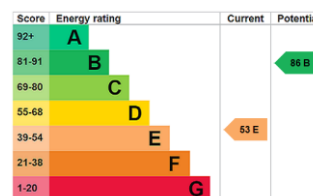


Located in the prestigious Holland Park Mews, this property offers two double bedrooms, two bathrooms, and a private garage.

The ground floor features an open-plan reception room and a modern kitchen, while the upper floor includes two generously sized double bedrooms, one with an en suite, as well as a family bathroom.

Holland Park Mews is just a short walk from the green space of Holland Park and within walking distance of Notting Hill and Kensington.

Minimum Term: 12 months
Deposit Required: £7,961.54
Local Authority: Royal Borough of Kensington & Chelsea
Council Tax Band: H
EPC Rating: E
Unfurnished



Chestertons Kensington Lettings

116 Kensington High Street
 Kensington
 London
 W8 7RW
kensingtonlettingsusers@chestertons.co.uk
 02079377260
chestertons.co.uk

Additional tenant charges apply (fees apply to non-AST tenancies only)
 Tenancy Agreement Fee: £300
 References per Tenant/Guarantor: £60
 Inventory check (approx. £100 – £250 inc. VAT)
chestertons.co.uk/property-to-rent/applicable-fees

Holland Park Mews, W11

Approximate gross internal area

122.74 sq m / 1321 sq ft

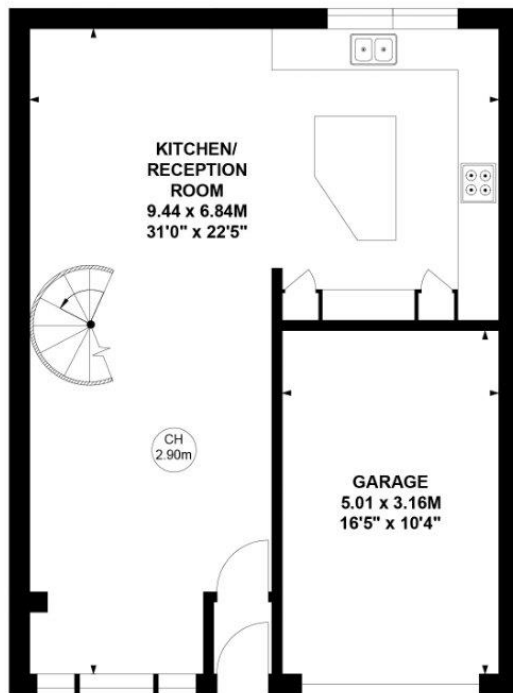
(Including Garage)

Garage

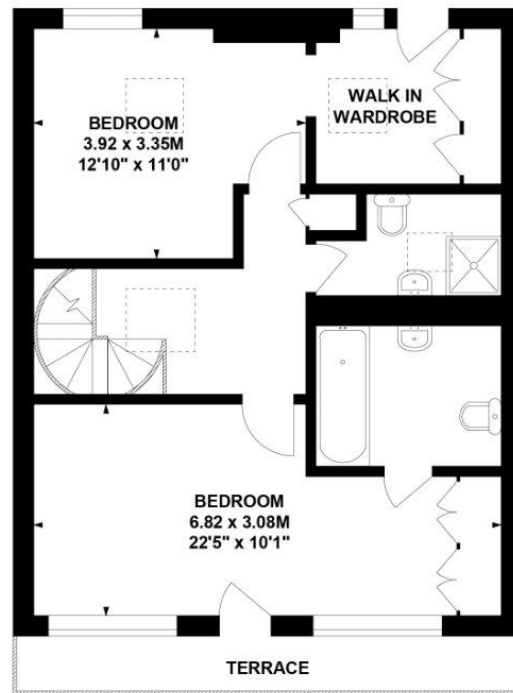
15.82 sq m / 170 sq ft

Key :

CH - Ceiling Height



Ground Floor



First Floor

Not to scale, for guidance only and must not be relied upon as a statement of fact.

All measurements and areas are approximate only

