



Albert Court

Prince Consort Road, SW7

£9,100 per month
(£2,100 per week)

Chestertons are proud to present this very spacious three double bedroom apartment. The property boasts approx. 2,033 sqft and comprises a grand entry hallway, two modern bathrooms and a large reception room with very high ceilings.



Albert Court

Prince Consort Road, SW7

- Three Double Bedrooms
- Two Bathrooms
- Wooden Flooring Throughout
- Concierge
- High Ceilings
- Located just moments away from Hyde Park

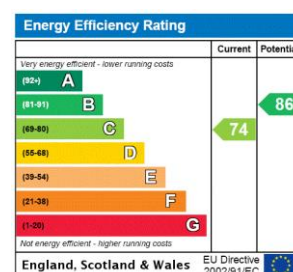


Chestertons are proud to present this very spacious three double bedroom apartment. The property boasts approx. 2,033 sq ft and comprises a grand entry hallway, two modern bathrooms and a large reception room with very high ceilings.

Albert Court itself is a much sought after prime building adjacent to the Royal Albert Hall with excellent security and a 24hr Concierge service.

The property is ideally located right opposite beautiful greeneries of Hyde Park. The area contains many of London's finest restaurants, shops, art galleries and hotels. Knightsbridge and South Kensington themselves are premier international business locations, which benefits from its close proximity to the West End and is in easy reach of the City of London and Canary Wharf.

Minimum Term: 6 months
Deposit Required: £12,600.00
Local Authority: Royal Borough of Kensington & Chelsea
Council Tax Band: H
EPC Rating: C
Unfurnished



Chestertons Kensington Lettings

116 Kensington High Street
 Kensington
 London
 W8 7RW
lettings.kensington@chestertons.co.uk
 02079377260
chestertons.co.uk

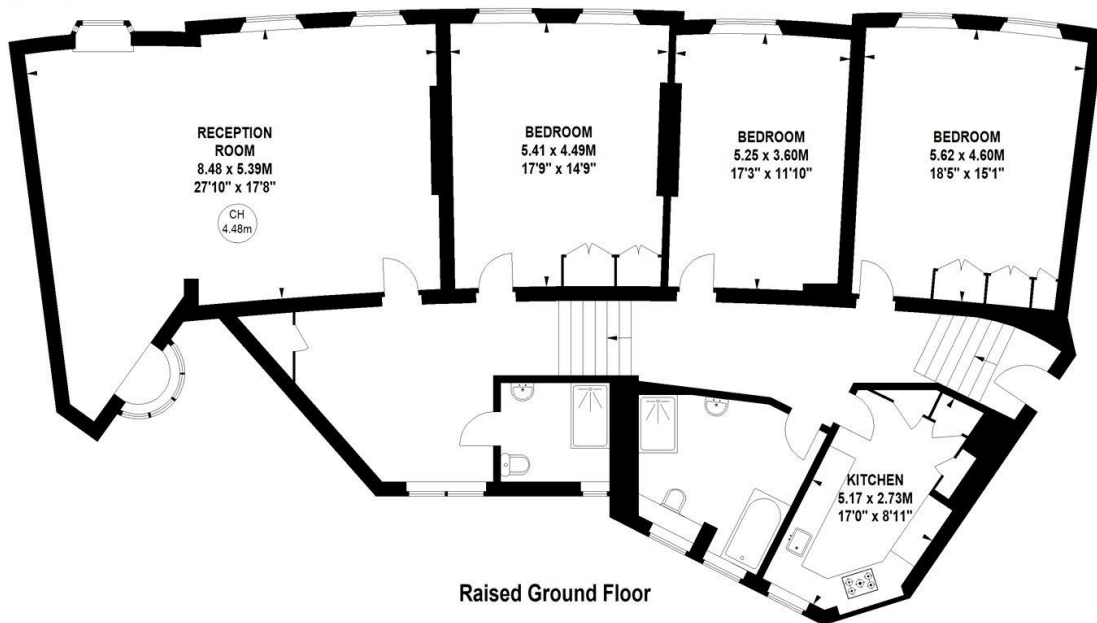
Additional tenant charges apply (fees apply to non-AST tenancies only)
 Tenancy Agreement Fee: £300
 References per Tenant/Guarantor: £60
 Inventory check (approx. £100 – £250 inc. VAT)
chestertons.co.uk/property-to-rent/applicable-fees

**Albert Court,
Prince Consort Road, SW7**

Approximate gross internal area
190.63 sq m / 2052 sq ft



Key :
CH - Ceiling Height



Not to scale, for guidance only and must not be relied upon as a statement of fact.
All measurements and areas are approximate only

