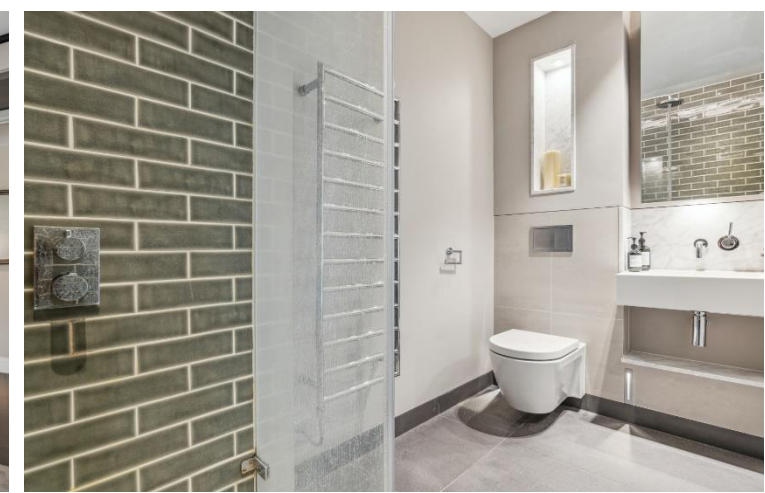
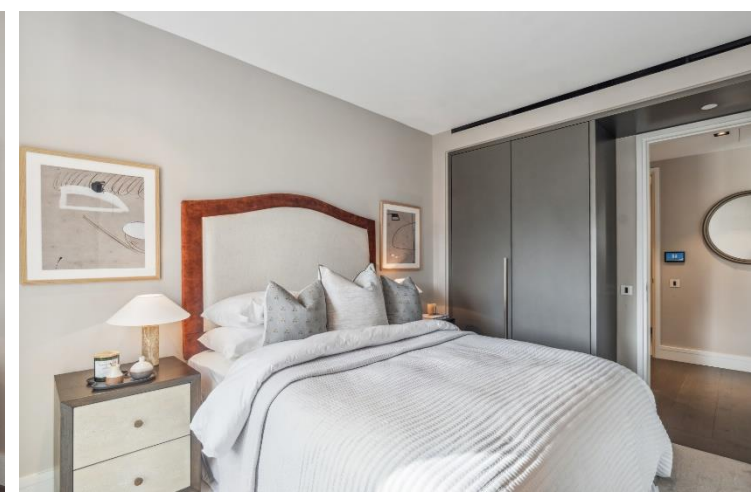
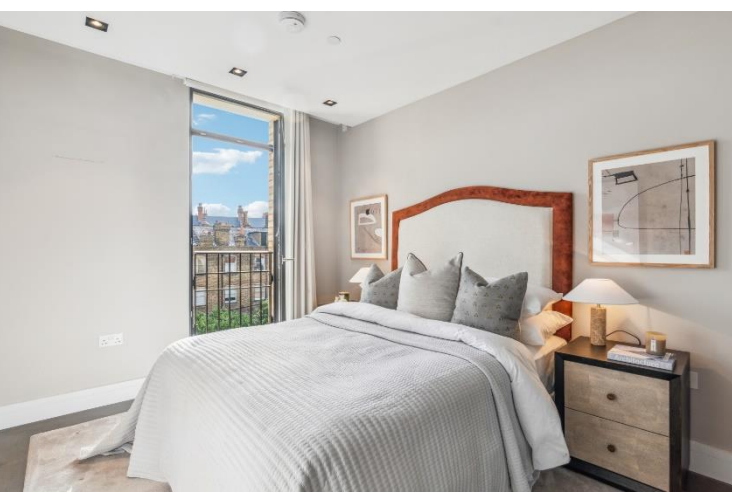




Young Street  
London, W8

CHESTERTONS









A beautifully presented two double bedroom apartment located on the fourth floor of the prestigious 21 Young Street development with south facing balcony and secure underground parking.

Set peacefully just off Kensington High Street around a communal courtyard garden, this luxury apartment comprises a bright and spacious open plan living room and kitchen with floor to ceiling windows and double doors opening onto a private balcony, a generous second bedroom and wonderful master suite with walk through wardrobe and stylish en suite bathroom. There is also an additional bathroom and handy utility cupboard.

21 Young Street also benefits from a superb array of communal amenities including a beautifully furnished reception with concierge service, residents library, private cinema and gym as well as space to host business meetings.

Located just moments away from the many shops, restaurants and transport links of Kensington High Street and the green open spaces of Hyde Park.

### £5,850 pcm

Additional tenant charges apply (fees apply to non-AST tenancies only)

Tenancy Agreement Fee: £300

References per Tenant/Guarantor: £60

Inventory check (approx. £100 – £250 inc. VAT)

[chestertons.co.uk/property-to-rent/applicable-fees](http://chestertons.co.uk/property-to-rent/applicable-fees)

Energy Efficiency Rating		Current	Potential
92-100	A		
81-91	B		
69-80	C		
55-68	D		
39-54	E		
21-38	F		
1-20	G		
Not energy efficient - higher running costs			
England, Scotland & Wales		EU Directive 2002/91/EC	

**Minimum Term:** 12 months  
**Deposit Required:** £8,100.00  
**Local Authority:** Royal Borough of Kensington & Chelsea  
**Council Tax Band:** G  
**EPC Rating:** B  
**Unfurnished**

### Chestertons Kensington Lettings

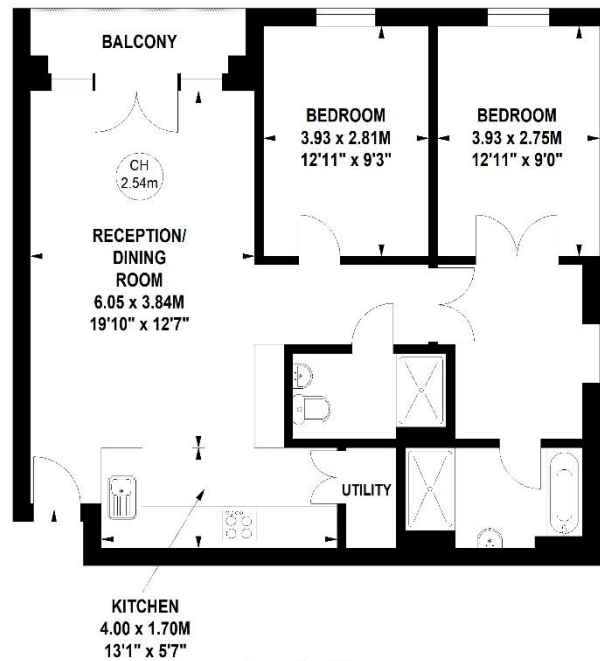
116 Kensington High Street  
 Kensington  
 London  
 W8 7RW

[kensingtonlettingsusers@chestertons.co.uk](mailto:kensingtonlettingsusers@chestertons.co.uk)  
 02079377260

# Young Street, Kensington, W8

Approximate gross internal area  
80.17 sq m / 863 sq ft

Key :  
CH - Ceiling Height



## Fourth Floor

Not to scale, for guidance only and must not be relied upon as a statement of fact.  
All measurements and areas are approximate only

Chesterton UK Services Limited trading as Chestertons for themselves and for the vendor of this property whose agents they are, give notice that (i) these particulars do not constitute any part of an offer or contract, (ii) all statements contained within these particulars are made without responsibility on the part of Chestertons or the vendor, (iii) whilst made in good faith, none of the statements contained within these particulars are to be relied upon as a statement or representation of fact, (iv) any intending purchasers must satisfy themselves by inspection or otherwise as to the correctness of each of the statements contained within these particulars, (v) the vendor does not make or give either Chestertons or any person in their employment any authority to make or give representation or warranty whatsoever in relation to this property. Wide angle lenses may be used. ©Copyright Chestertons | Chesterton Global Ltd | Registered Office 40 Connaught Street, Hyde Park, London W2 2AB Registered Company Number 05334580.



This paper is  
100% recyclable