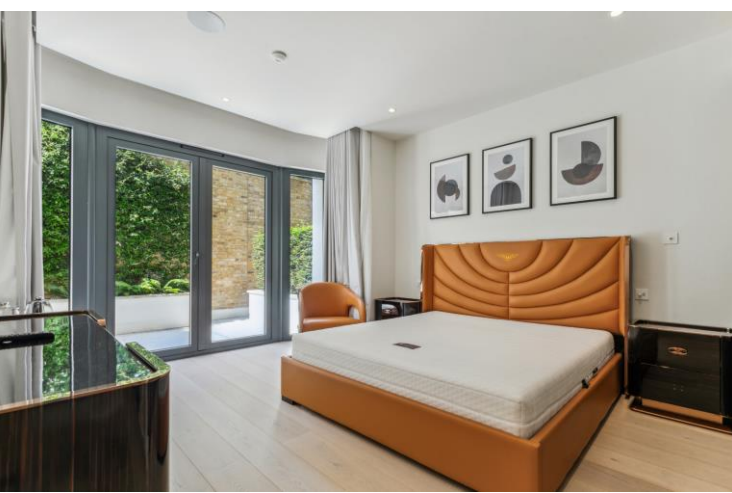




Holland Park  
London, W11

CHESTERTONS









This apartment is part of an exclusive new development in Holland Park. This beautiful and luxurious three-bedroom split level apartment is situated on the ground and lower ground floors with great private outside space.

- Furnished
- Private patio
- 24-hour concierge
- Gym
- Pool
- Boot room

### £20,000 pcm

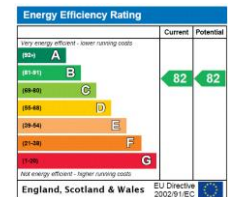
Additional tenant charges apply (fees apply to non-AST tenancies only)

Tenancy Agreement Fee: £300

References per Tenant/Guarantor: £60

Inventory check (approx. £100 – £250 inc. VAT)

[chestertons.co.uk/property-to-rent/applicable-fees](https://www.chestertons.co.uk/property-to-rent/applicable-fees)



**Minimum Term:**

6 months

**Deposit Required:**

£27,692.31

**Local Authority:**

Royal Borough of Kensington & Chelsea

**Council Tax Band:**

H

**EPC Rating:** B

**Furnished**

**Chestertons Kensington Lettings**

116 Kensington High Street

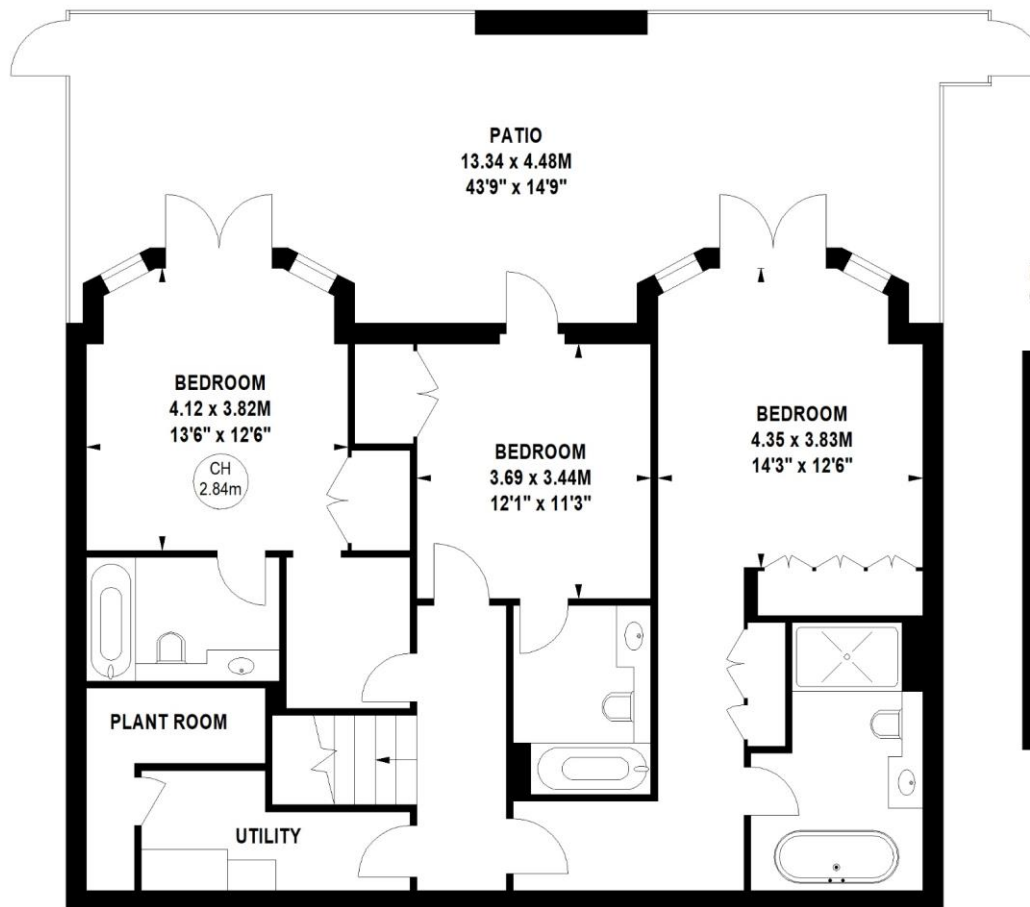
Kensington

London

W8 7RW

[kensington@chestertons.co.uk](mailto:kensington@chestertons.co.uk)

02079377260



**Lower Ground Floor**

Not to scale, for guidance only and must not be relied upon as a statement of fact.  
All measurements and areas are approximate only

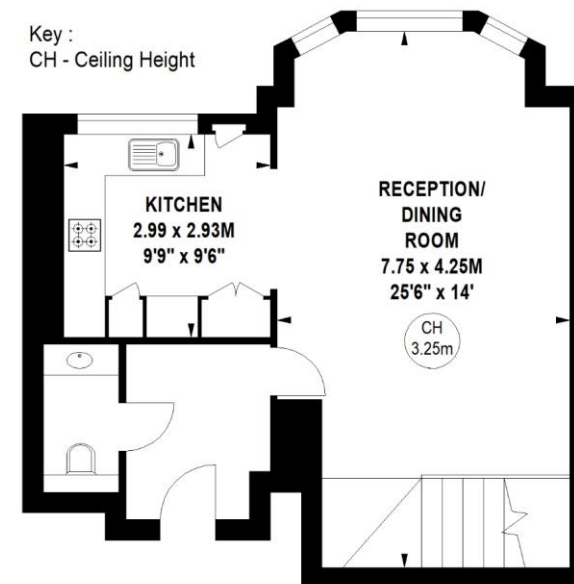
## Holland Park, W11

Approximate gross internal area

151.14 sq m / 1627 sq ft



Key :  
CH - Ceiling Height



**Raised Ground Floor**

