



Queen's Gate
London, SW7

CHESTERTONS





A rare opportunity to rent this exceptionally spacious and beautifully interior-designed two-bedroom, two-bathroom apartment, situated on the lower ground floor of a grand period building on Queen's Gate, SW7.

Offering nearly 1,900 square feet of refined living space, the property has been finished to an impeccable standard throughout, combining sleek modern touches with timeless elegance. The apartment features two generously sized double bedrooms with excellent storage and two luxurious bathrooms, including a stunning en-suite.

The large, contemporary reception room provides an impressive space for both relaxing and entertaining, while a separate conservatory-style dining area floods the space with natural light. The modern kitchen is fully fitted with high-spec appliances, and the apartment also benefits from a separate laundry and utility room—adding to the practicality of the space.

High ceilings, quality wood flooring, and bespoke furnishings elevate the home's style and comfort, creating a truly special residence in one of London's most sought-after locations. Just moments from South Kensington, Hyde Park, and excellent transport links, this property offers the perfect balance of luxury and convenience.

- 2 bedrooms
- 2 bathrooms
- Utility Room
- Dining area
- Furnished

£8,558.33 pcm

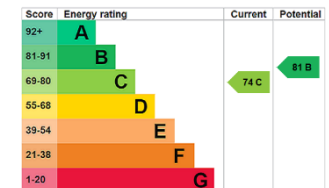
Additional tenant charges apply (fees apply to non-AST tenancies only)

Tenancy Agreement Fee: £300

References per Tenant/Guarantor: £60

Inventory check (approx. £100 – £250 inc. VAT)

[chestertons.co.uk/property-to-rent/applicable-fees](https://www.chestertons.co.uk/property-to-rent/applicable-fees)



Minimum Term: 12 months

Deposit Required: £11,850

Local Authority: Royal Borough of Kensington & Chelsea

Council Tax Band: G

EPC Rating: C

Furnished

Chestertons Kensington Lettings

116 Kensington High Street

Kensington

London

W8 7RW

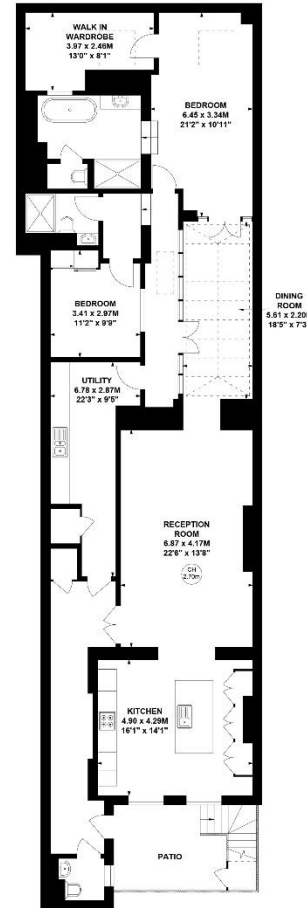
kensingtonlettingsusers@chestertons.co.uk

02079377260

Queen's Gate, SW7

Approximate gross internal area
169.53 sq m / 1825 sq ft

Key :
CH - Ceiling Height



Lower Ground Floor

Not to scale, for guidance only and must not be relied upon as a statement of fact.
All measurements and areas are approximate only

Chesterton UK Services Limited trading as Chestertons for themselves and for the vendor of this property whose agents they are, give notice that (i) these particulars do not constitute any part of an offer or contract, (ii) all statements contained within these particulars are made without responsibility on the part of Chestertons or the vendor, (iii) whilst made in good faith, none of the statements contained within these particulars are to be relied upon as a statement or representation of fact, (iv) any intending purchasers must satisfy themselves by inspection or otherwise as to the correctness of each of the statements contained within these particulars, (v) the vendor does not make or give either Chestertons or any person in their employment any authority to make or give representation or warranty whatsoever in relation to this property. Wide angle lenses may be used. ©Copyright Chestertons | Chesterton Global Ltd | Registered Office 40 Connaught Street, Hyde Park, London W2 2AB Registered Company Number 05334580.



This paper is
100% recyclable