



Sinclair Road

London, W14

£3,400 per month
(£784.62 per week)

A refurbished first floor apartment on Sinclair Road offers two double bedrooms, two bathrooms, a private balcony, and great storage. Conveniently located near transport links, Westfield, Shepherd's Bush, and Holland Park.

CHESTERTONS



Sinclair Road

London, W14

- Two double bedrooms
- Private terrace
- Furnished



This well maintained first floor apartment situated on Sinclair Road features two double bedrooms, two bathrooms, and a private balcony. The property offers excellent storage space and modern finishes throughout.

Sinclair Road is ideally located, providing easy access to transport links and the shopping, dining, and leisure options at Westfield Shopping Centre and Shepherd's Bush. It's also close to Brook Green, Kensington High Street, and the expansive green spaces of Holland Park, making it a perfect spot for both convenience and relaxation.

Minimum Term: 12 months
Deposit Required: £3,923.08
Local Authority: Kensington and Chelsea
Council Tax Band: E
EPC Rating: B
Furnished

Energy Efficiency Rating		
	Current	Potential
Very energy efficient - lower running costs		
A (91-100)		
B (81-90)	81	81
C (69-80)		
D (55-68)		
E (39-54)		
F (21-38)		
G (1-20)		
Not energy efficient - higher running costs		
England, Scotland & Wales EU Directive 2002/91/EC		

Chestertons Kensington Lettings

116 Kensington High Street
 Kensington
 London
 W8 7RW
kensingtonlettingsusers@chestertons.co.uk
 02079377260
[chestertons.co.uk](https://www.chestertons.co.uk)

Additional tenant charges apply (fees apply to non-AST tenancies only)
 Tenancy Agreement Fee: £300
 References per Tenant/Guarantor: £60
 Inventory check (approx. £100 – £250 inc. VAT)
[chestertons.co.uk/property-to-rent/applicable-fees](https://www.chestertons.co.uk/property-to-rent/applicable-fees)

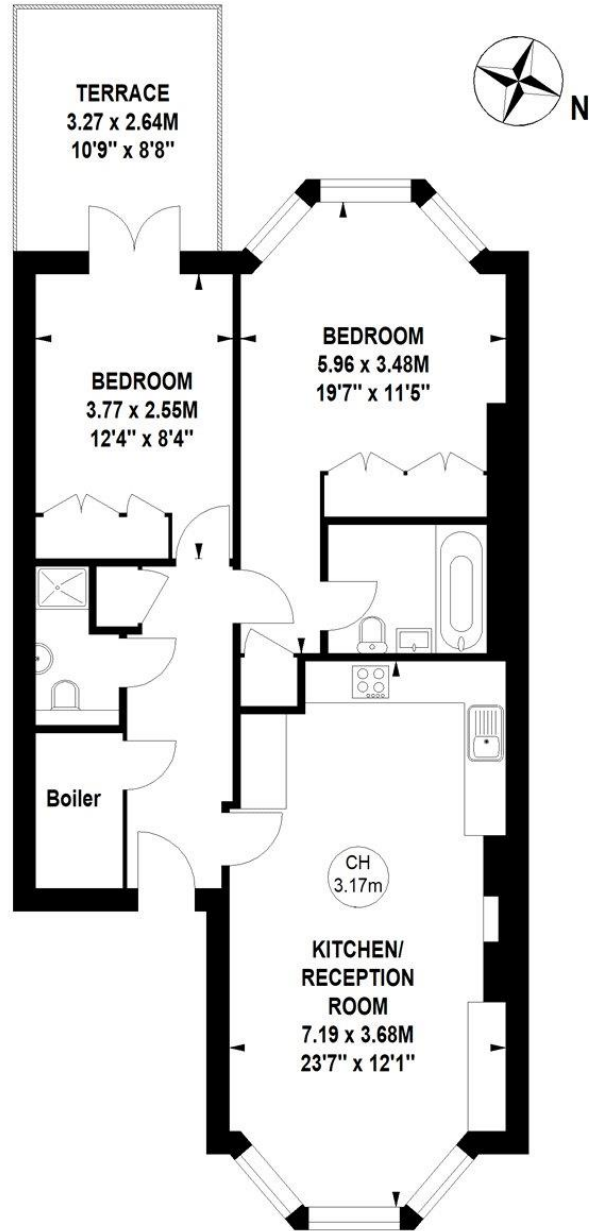
Sinclair Road, W14

Approximate gross internal area

66.05 sq m / 711 sq ft

Key :

CH - Ceiling Height



First Floor

Not to scale, for guidance only and must not be relied upon as a statement of fact.
All measurements and areas are approximate only

