



Kensington Church Street

London, W8

£2,800 per month
(£646.15 per week)

Newly refurbished two bedroom apartment located on the first floor of this contemporary building, property comprises of a bright reception leading to newly fitted kitchen, double bedroom with plenty of storage a single bedroom.



Kensington Church Street

London, W8



Newly refurbished two bedroom apartment located on the first floor of this contemporary building, property comprises of a bright reception leading to newly fitted kitchen, double bedroom with plenty of storage a single bedroom or office and modern bathroom.

Kensington Church Street connects Notting Hill Gate and Kensington High Street. The nearest underground is Notting Hill Gate (central line/circle and district line).

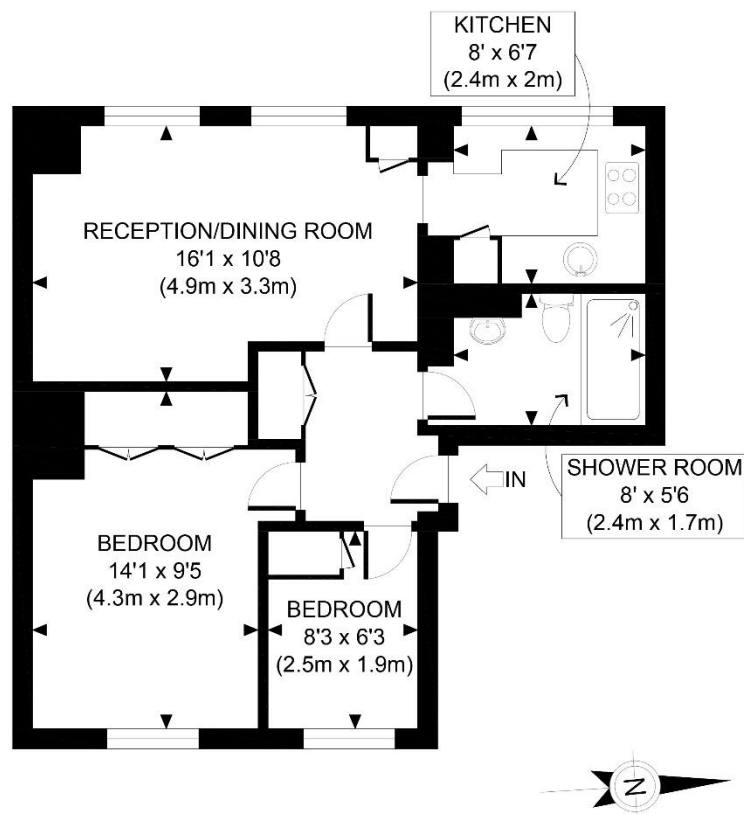
Minimum Term: 12 months
Deposit Required: £3,230.77
Local Authority:
Council Tax Band:
EPC Rating: C
Furnished, Part Furnished

Energy Efficiency Rating		
	Current	Potential
Very energy efficient - lower running costs		
A (92-100)		
B (81-91)		
C (69-80)	73	79
D (55-68)		
E (39-54)		
F (21-38)		
G (1-20)		
Not energy efficient - higher running costs		
England, Scotland & Wales EU Directive 2002/91/EC		

Chestertons Kensington Lettings

116 Kensington High Street
 Kensington
 London
 W8 7RW
kensingtonlettingsusers@chestertons.co.uk
 02079377260
chestertons.co.uk

Additional tenant charges apply (fees apply to non-AST tenancies only)
 Tenancy Agreement Fee: £300
 References per Tenant/Guarantor: £60
 Inventory check (approx. £100 – £250 inc. VAT)
chestertons.co.uk/property-to-rent/applicable-fees



FIRST FLOOR
GROSS INTERNAL
FLOOR AREA 527 SQ FT

APPROX. GROSS INTERNAL FLOOR AREA 527 SQ FT / 49 SQM	
Disclaimer: Floor plan measurements are approximate and are for illustrative purposes only. While we do not doubt the floor plan accuracy and completeness, you or your advisors should conduct a careful, independent investigation of the property in respect of monetary valuation	
Kensington Church St. W8	
date	28/07/20
