



Elsham Road

London, W14

£2,400 per month
(£553.85 per week)

This spacious two-bedroom flat is situated on a sought-after residential street in the Royal Borough of Kensington & Chelsea. Positioned on the second floor of a charming period building, the property features a generous open-plan kitchen and living

CHESTERTONS



Elsham Road

London, W14



This spacious two-bedroom flat is situated on a sought-after residential street in the Royal Borough of Kensington & Chelsea.

Positioned on the second floor of a charming period building, the property features a generous open-plan kitchen and living area, two double bedrooms, and a bathroom. It's conveniently located near the transport links of Shepherds Bush and Olympia stations. The flat is available to rent unfurnished, and is ready for immediate occupancy.

Minimum Term: 12 months
Deposit Required: £2,769.25
Local Authority: Royal Borough of Kensington & Chelsea
Council Tax Band: E
EPC Rating: C
Unfurnished

Score	Energy rating	Current	Potential
92+	A		
81-91	B		
69-80	C	78 C	83 B
55-68	D		
39-54	E		
21-38	F		
1-20	G		

Chestertons Kensington Lettings

116 Kensington High Street
 Kensington
 London
 W8 7RW
kensingtonlettingsusers@chestertons.co.uk
 02079377260
chestertons.co.uk

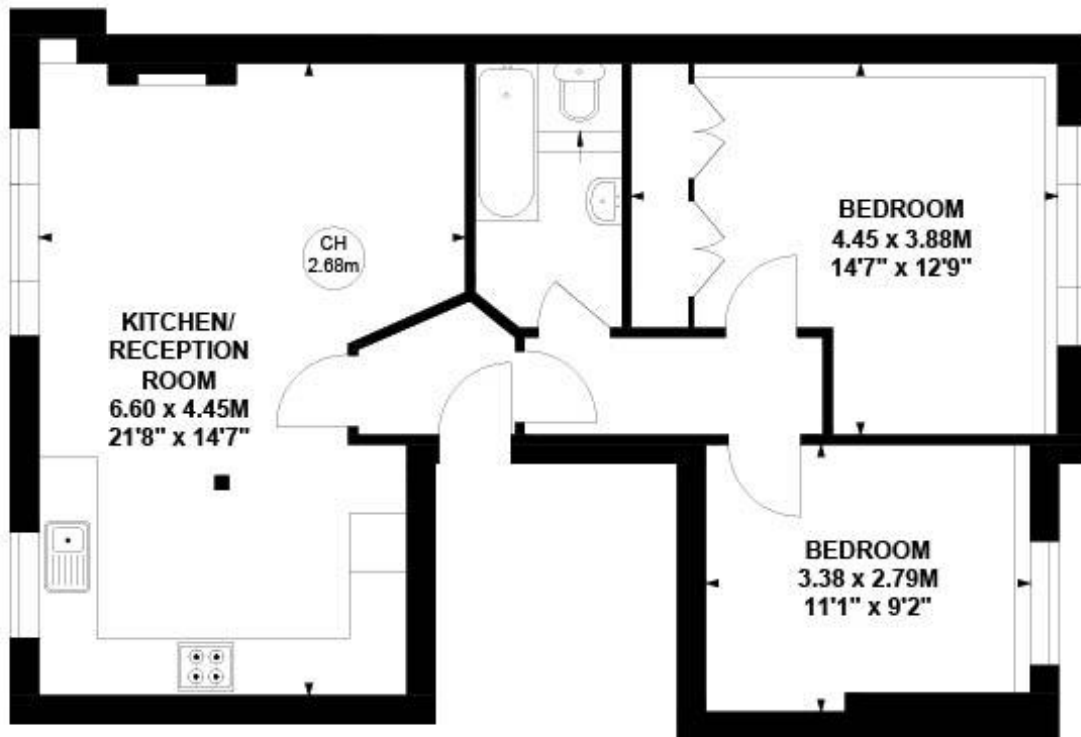
Additional tenant charges apply (fees apply to non-AST tenancies only)
 Tenancy Agreement Fee: £300
 References per Tenant/Guarantor: £60
 Inventory check (approx. £100 – £250 inc. VAT)
chestertons.co.uk/property-to-rent/applicable-fees

Elsham Road, W14

Approximate gross internal area

61.55 sq m / 662 sq ft

Key :
CH - Ceiling Height



Second Floor

Not to scale, for guidance only and must not be relied upon as a statement of fact.

All measurements and areas are approximate only

