



Logan House

1 Logan Place, W8

£2,350 per week
(£10,183.33 pcm)

A luxurious and spacious three bedroom duplex with plenty of outside space. The apartment has been refurbished to a very high standard with high end built in appliances. Logan Place is situated close to the many amenities of Kensington High Street.



Logan House

1 Logan Place, W8

- Three Bedroom Duplex
- Balcony and Large Patio
- Wooden Floors Throughout
- Luxurious Bathrooms
- Walk In Wardrobe in Master Bedroom
- Modern Kitchen



A luxurious and spacious three bedroom duplex with plenty of outside space. The apartment has been refurbished to a very high standard with high end built in appliances.

This charming duplex has a modern finish throughout and features a private balcony and patio, large modern kitchen, bright and spacious reception room, utility room, large bedrooms with good amounts of storage, large walk in wardrobe in the master bedroom and an en suite bathroom with built in TV and stand alone bath tub.

Logan Place is situated close to the many amenities of Kensington High Street and open green spaces of Holland Park.

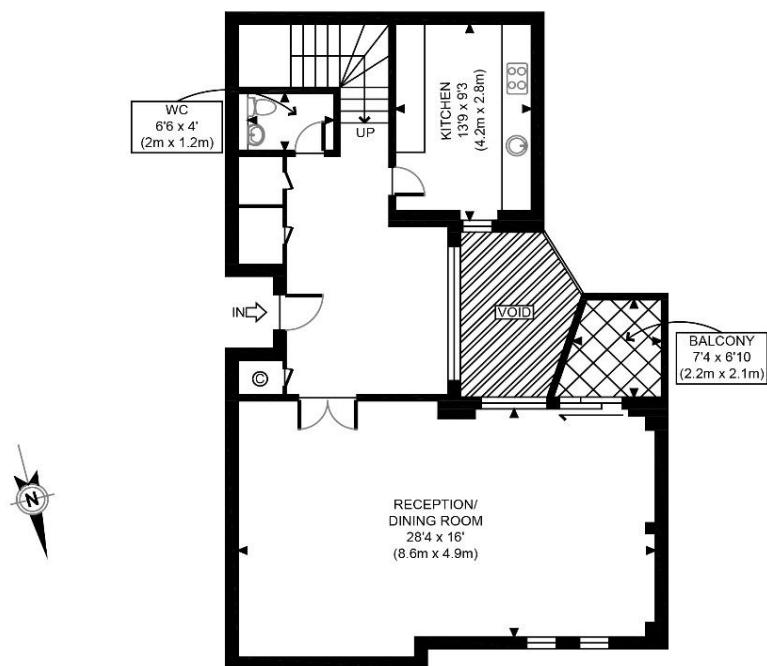
Tenure: To be advised
Furnished, Unfurnished

Additional tenant charges apply (fees apply to non-AST tenancies only)
 Tenancy Agreement Fee: £300
 References per Tenant/Guarantor: £60
 Inventory check (approx. £100 – £250 inc. VAT)
[chestertons.com/property-to-rent/applicable-fees](https://www.chestertons.com/property-to-rent/applicable-fees)

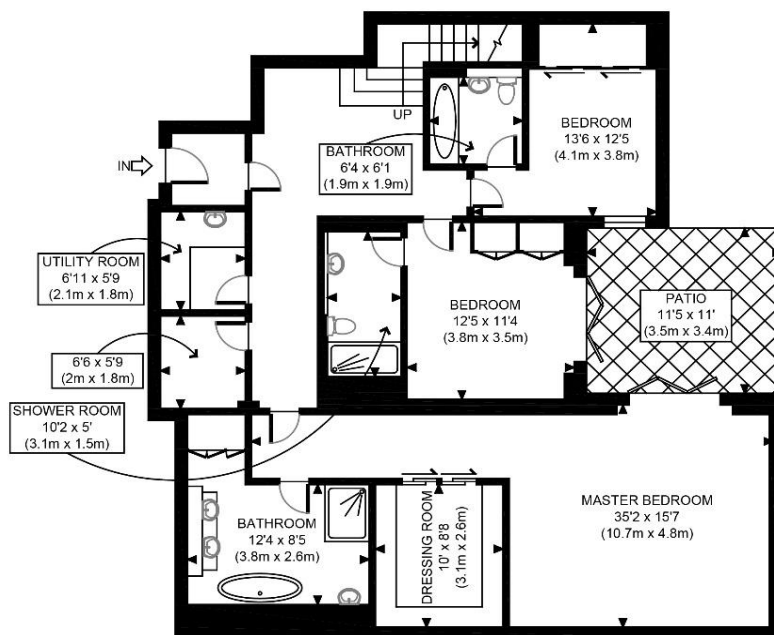
Energy Efficiency Rating		
	Current	Potential
Very energy efficient - lower running costs		
(94-100) A		
(81-93) B		
(69-80) C	74	74
(55-68) D		
(39-54) E		
(21-38) F		
(1-20) G		
Not energy efficient - higher running costs		
England, Scotland & Wales EU Directive 2002/91/EC		

Chestertons Kensington Lettings

116 Kensington High Street
 Kensington
 London
 W8 7RW
lettings.kensington@chestertons.com
 02079377260
[chestertons.com](https://www.chestertons.com)



GROUND FLOOR
GROSS INTERNAL
FLOOR AREA 911 SQ FT



LOWER GROUND FLOOR
GROSS INTERNAL
FLOOR AREA 1365 SQ FT

APPROX. GROSS INTERNAL FLOOR AREA 2276 SQ FT / 211 SQM	
Disclaimer: Floor plan measurements are approximate and are for illustrative purposes only. While we do not doubt the floor plan accuracy and completeness, you or your advisors should conduct a careful, independent investigation of the property in respect of monetary valuation	
Logan House	Date 16/02/22
photoplan	

