

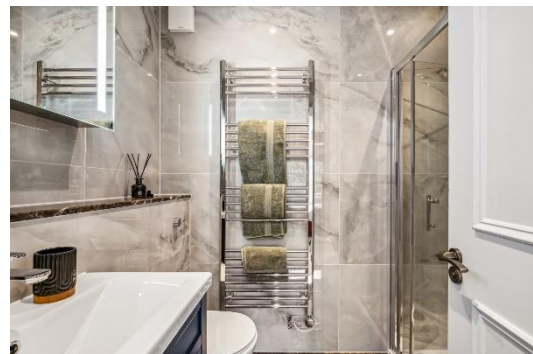


Lexham Gardens

London, W8

£4,495 per month
(£1,037.31 per week)

A modern two double bedroom apartment newly furnished to an exceptional standard. The property is offered fully furnished and is based within the sought-after Lexham Gardens.



Lexham Gardens

London, W8

- 2 bedrooms
- 2 bathrooms
- close to transport
- available now

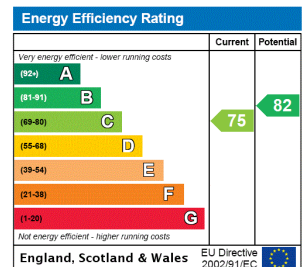


This stunning, newly refurbished two-bedroom apartment offers modern living at its finest. Each of the two double bedrooms has been thoughtfully designed, providing a perfect blend of comfort and style. The interiors have been meticulously crafted to an exceptional standard, featuring high-quality finishes and contemporary furnishings that create a warm and inviting atmosphere throughout the entire space.

The apartment is offered fully furnished, making it an ideal choice for those seeking a move-in-ready home. From the spacious living area to the well-appointed kitchen, every detail has been considered to ensure a luxurious living experience. The kitchen is equipped with state-of-the-art appliances, sleek countertops, and ample storage, making it perfect for both casual dining and entertaining guests.

Situated in the highly sought-after Lexham Gardens, this property enjoys a prime location in the heart of Kensington. Lexham Gardens is renowned as one of Kensington's most prestigious streets, offering a tranquil residential setting while being just moments away from the vibrant energy of central London.

Minimum Term: 12 months
Deposit Required: £6,223.85
Local Authority: Royal Borough of Kensington & Chelsea
Council Tax Band: F
EPC Rating: C
Furnished



Chestertons Kensington Lettings

116 Kensington High Street
 Kensington
 London
 W8 7RW
 kensington@chestertons.co.uk
 02079377260
 chestertons.co.uk

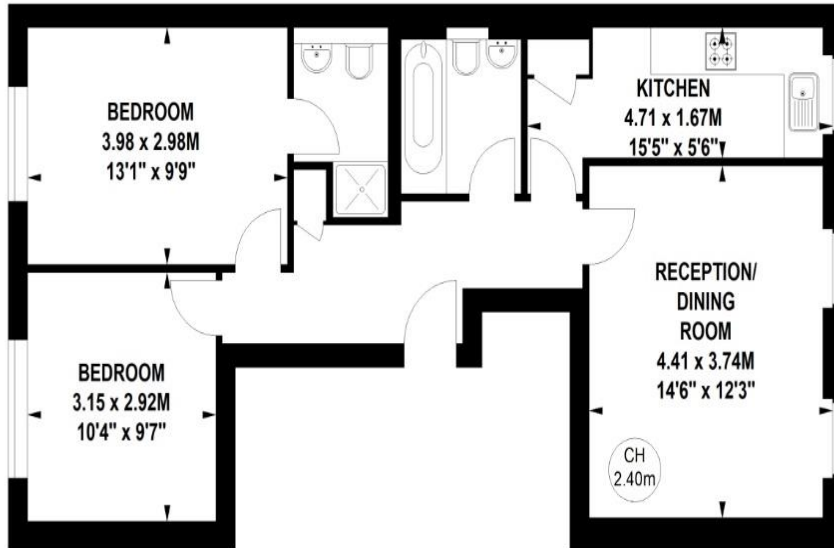
Additional tenant charges apply (fees apply to non-AST tenancies only)
 Tenancy Agreement Fee: £300
 References per Tenant/Guarantor: £60
 Inventory check (approx. £100 – £250 inc. VAT)
chestertons.co.uk/property-to-rent/applicable-fees

Lexham Gardens, W8

Key :
CH - Ceiling Height

Approximate gross internal area

62.53 sq m / 673 sq ft



Fourth Floor

Not to scale, for guidance only and must not be relied upon as a statement of fact.
All measurements and areas are approximate only

