



Canning Place
Kensington, W8

CHESTERTONS





Available exclusively through Chestertons, this fabulous period house is situated in a secluded location in one of Kensington's most desirable areas close to Kensington Gardens and a short walk to amenities of Gloucester Road and Kensington High Street.

Boasting original wooden flooring and ornate ceilings throughout, the property offers excellent family and entertainment space.

The house has been partially refurbished to include a new modern kitchen on the raised ground floor opening on to a beautiful dining/family room. There is a double reception on the first floor that enjoys natural light and is ideal for entertainment. A master bedroom arranged on the second floor benefits from ample storage space and a spacious en-suite bathroom with a separate shower. A further three double bedrooms are all well-sized rooms and there is a family bathroom and a separate guest cloakroom.

The property also has an outstanding roof terrace with fantastic views and a patio terrace.

- A fabulous four bedrooms end of terrace house
- Kitchen, dining and two further receptions with wood flooring
- Fantastic Roof terrace and a Patio area
- Ideally located close to Kensington Gardens, Gloucester Road & Kensington High Street

£11,000 pcm

Additional tenant charges apply (fees apply to non-AST tenancies only)

Tenancy Agreement Fee: £300

References per Tenant/Guarantor: £60

Inventory check (approx. £100 – £250 inc. VAT)

chestertons.co.uk/property-to-rent/applicable-fees

Energy Efficiency Rating		Current	Potential
92-100	A		
81-91	B		
69-80	C		
55-68	D		
39-54	E	42	53
21-38	F		
1-20	G		

Not energy efficient - higher running costs

England, Scotland & Wales EU Directive 2002/91/EC

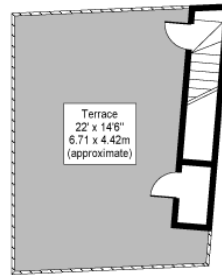
Minimum Term: 6 months
Deposit Required: £15,230.77
Local Authority: Royal Borough Of Kensington & Chelsea
Council Tax Band: H
EPC Rating: D
Unfurnished

Chestertons Kensington Lettings

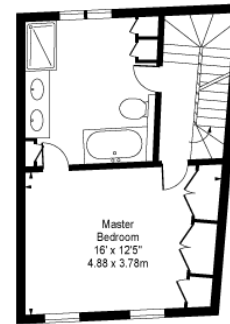
116 Kensington High Street
 Kensington
 London
 W8 7RW

kensington@chestertons.co.uk
 02079377260

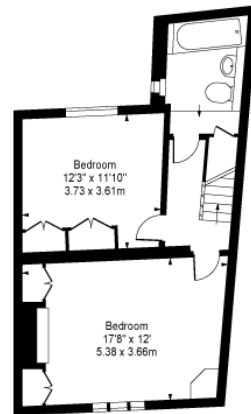
Canning Place,
Kensington, W8



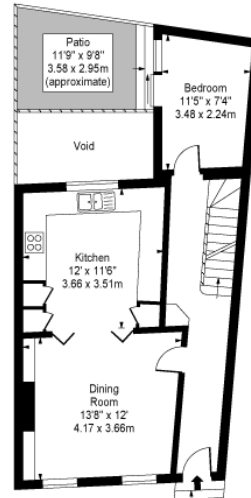
Third Floor



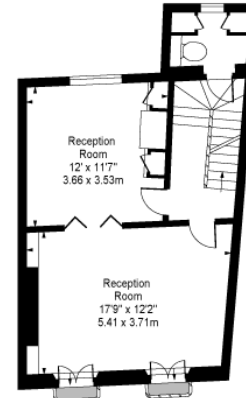
Second Floor



Lower Ground Floor



Ground Floor



First Floor

Approx Gross Internal Area **1939 Sq Ft - 180.13 Sq M**

For Illustration Purposes Only - Not To Scale
Floor Plan by www.bpmmediagroup.com
Ref. No. P54073

Chesteron Global Ltd trading as Chestertons for themselves and for the vendor of this property whose agents they are, give notice that (i) these particulars do not constitute any part of an offer or contract, (ii) all statements contained within these particulars are made without responsibility on the part of Chestertons or the vendor, (iii) whilst made in good faith, none of the statements contained within these particulars are to be relied upon as a statement or representation of fact, (iv) any intending purchasers must satisfy themselves by inspection or otherwise as to the correctness of each of the statements contained within these particulars, (v) the vendor does not make or give either Chestertons or any person in their employment any authority to make or give representation or warranty whatsoever in relation to this property. Wide angle lenses may be used. ©Copyright Chestertons | Chesteron Global Ltd | Registered Office 40 Connaught Street, Hyde Park, London W2 2AB Registered Company Number 05334580.



This paper is
100% recyclable