



Lexham Gardens

Kensington, W8

£3,033.33 per month
(£700 per week)

A spacious two bedroom apartment on the third floor (with lift) of a period conversion. The flat benefits from a large South facing reception room with views over communal gardens, two bedrooms, two bathrooms (one en suite) and a separate kitchen.



Lexham Gardens

Kensington, W8

- A spacious apartment on the third floor with a lift
- Two bedrooms, two bathrooms, reception room, separate kitchen
- South facing reception room with views over communal gardens
- In close proximity to Gloucester Road underground station

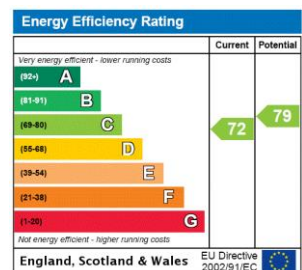


A spacious two bedroom flat on the third floor (with lift) of a period conversion. The flat benefits from a large South facing reception room with views over communal gardens, two bedrooms, two bathrooms (one en suite) and a separate kitchen.

Lexham Gardens is a pretty garden square conveniently located close to Gloucester Road tube station, Kensington High Street and Earls Court.

Lexham Gardens is a pretty garden square conveniently located close to Gloucester Road tube station, Kensington High Street and Earls Court.

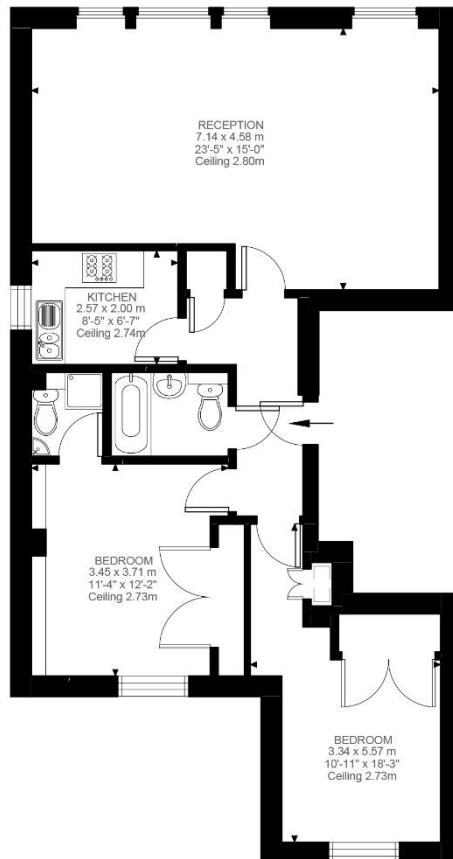
Minimum Term: 6 months
Deposit Required: £3,500.00
Local Authority: Royal Borough of Kensington & Chelsea
Council Tax Band: G
EPC Rating: C
Furnished



Chestertons Kensington Lettings

116 Kensington High Street
 Kensington
 London
 W8 7RW
 lettings.kensington@chestertons.co.uk
 02079377260
 chestertons.co.uk

Additional tenant charges apply (fees apply to non-AST tenancies only)
 Tenancy Agreement Fee: £300
 References per Tenant/Guarantor: £60
 Inventory check (approx. £100 – £250 inc. VAT)
chestertons.co.uk/property-to-rent/applicable-fees



Third Floor
830 ft²

Lexham Gardens, W8

Approximate Gross Internal Area
77.13 SQ.M / 830 SQ.FT

KEY: CH = Ceiling Height
Restricted Head Height

Illustration for identification purposes only. Not to scale.
Floor Plan Drawn According To RICS Guidelines.

