



# Kensington Court

Kensington, W8

£8,016.67 per month  
(£1,850.00 per week)

This immaculate apartment comprises a spacious reception, dining room, and separate eat in modern kitchen. Both bedrooms are spacious doubles with en-suite bathrooms and built-in storage.

Rental includes gas central heating and hot water.



# Kensington Court

## Kensington, W8

- A modern and newly refurbished 2 bedroom apartment in a beautiful Redbrick building
- 2 Bedrooms, 2 Bathrooms, 1 Reception
- Contemporary interior and a separate eat in kitchen
- Heating & Hot Water Included within the Rental



A spacious two-bedroom apartment situated in this attractive red brick building on the popular Kensington Court. Situated just behind Kensington High Street and close to Kensington Gardens, which benefits from various shops, restaurants, and transport links.

This immaculate apartment comprises a spacious reception, dining room, and separate eat-in modern kitchen. Both bedrooms are spacious doubles with en-suite bathrooms. Rental includes gas central heating and hot water.

Kensington Court is enviably located within easy reach of the restaurants, amenities, and transport links Kensington High Street has to offer. The property provides easy access to the independent shops and cafes on nearby Thackeray Street, while the green open spaces of Kensington Gardens and Hyde Park are nearby.

**Minimum Term:** 6 months  
**Deposit Required:** £7,400.00  
**Local Authority:** Royal Borough of Kensington & Chelsea  
**Council Tax Band:** G  
**EPC Rating:** D  
**Furnished, Part Furnished, Unfurnished**


Energy Efficiency Rating		Current	Potential
Very energy efficient - lower running costs			
(92-100)	A		
(81-91)	B		
(69-80)	C		
(55-68)	D	60	62
(39-54)	E		
(21-38)	F		
(1-20)	G		
Not energy efficient - higher running costs			
England, Scotland & Wales		EU Directive 2002/91/EC	

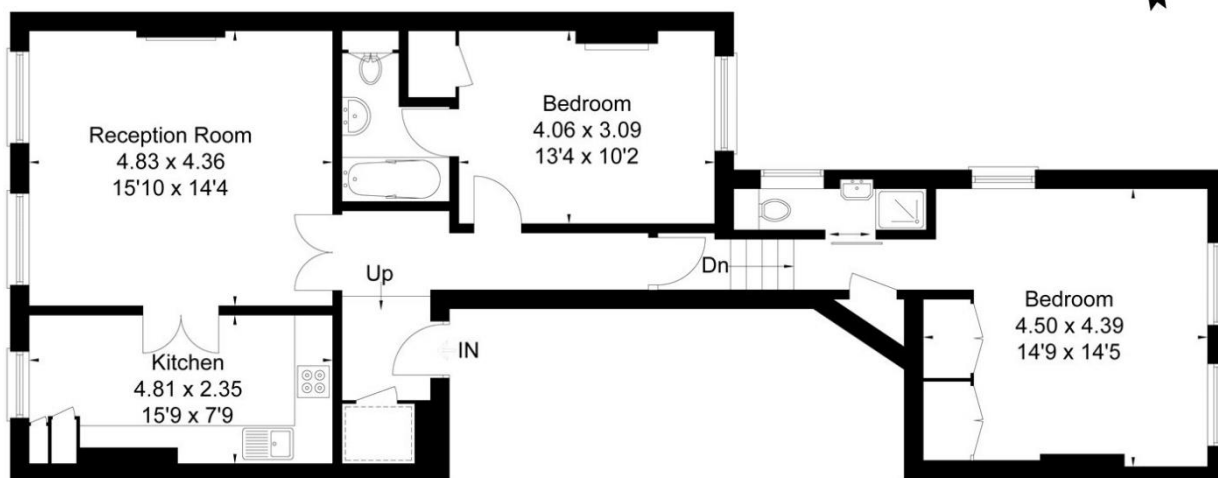
### Chestertons Kensington Lettings

116 Kensington High Street  
 Kensington  
 London  
 W8 7RW  
 kensington@chestertons.co.uk  
 02079377260  
 chestertons.co.uk

Additional tenant charges apply (fees apply to non-AST tenancies only)  
 Tenancy Agreement Fee: £300  
 References per Tenant/Guarantor: £60  
 Inventory check (approx. £100 – £250 inc. VAT)  
 chestertons.co.uk/property-to-rent/applicable-fees

Approximate Gross Internal Area = 87 sq m / 936 sq ft

 = Reduced headroom below 1.5m / 5'0



## Second Floor

FLOORPLANZ © 2014 0845 6344080 Ref: 131327

This plan is for layout guidance only. Drawn in accordance with RICS guidelines. Not drawn to scale unless stated. Windows & door openings are approximate. Whilst every care is taken in the preparation of this plan, please check all dimensions, shapes & compass bearings before making any decisions reliant upon them.

