



Radnor Terrace

Kensington, W14

£4,225 per month
(£975 per week)

A modern and tastefully furnished, two double bedroom apartment with a large balcony, set in the luxurious 375 Kensington High Street development.

CHESTERTONS



Radnor Terrace

Kensington, W14

- Two Bedroom Apartment
- Furnished
- Modern
- 24 hour Concierge
- Access to Swimming Pool and Gym Facilities
- Located moments away from Kensington High Street



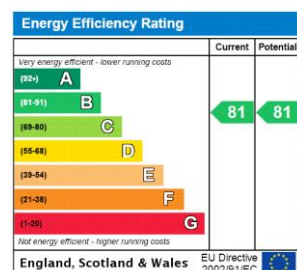
A modern and tastefully furnished, 2 double bedroom apartment with a large balcony, set in the luxurious 375 Kensington High Street development.

Set on the tenth floor, the apartment comprises a bright reception room with large floor-to-ceiling windows leading out to a private balcony, and an open planned fitted kitchen with appliances.

A master bedroom with built-in wardrobes and sleekly designed en-suite bathroom with tiled area around the bath, large mirror and heated towel rail; second double bedroom with storage, second fully tiled bathroom and a storage cupboard in the hallway. The property is offered on a furnished basis and has been finished to a high standard with wooden flooring in the reception room.

The development benefits from a 24-hour concierge, resident's gym, swimming pool and private cinema facilities.

Minimum Term: 6 months
Deposit Required: £4,875.00
Local Authority: Royal Borough of Kensington & Chelsea
Council Tax Band: F
EPC Rating: B
Furnished



Chestertons Kensington Lettings

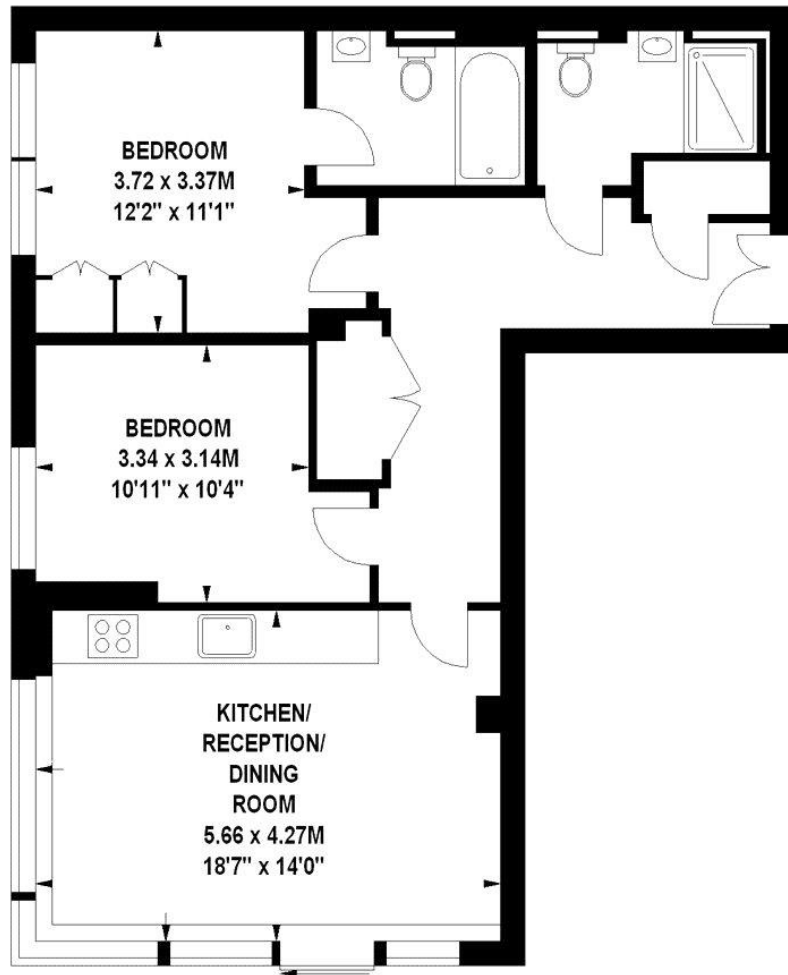
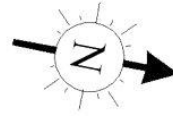
116 Kensington High Street
 Kensington
 London
 W8 7RW
 kensington@chestertons.co.uk
 02079377260
 chestertons.co.uk

Additional tenant charges apply (fees apply to non-AST tenancies only)
 Tenancy Agreement Fee: £300
 References per Tenant/Guarantor: £60
 Inventory check (approx. £100 – £250 inc. VAT)
chestertons.co.uk/property-to-rent/applicable-fees

Lord Kensington House, W14

Approximate gross internal area

75.53 sq m / 813 sq ft



Tenth Floor

The floor plan is not to scale and measurements and areas shown are approximate and therefore should be used for illustrative purposes only.

The plan has been prepared in accordance with the RICS code of Measuring Practice and whilst we have confidence in the information produced, it must not be relied on.

If there is any aspect of particular importance, you should carry out or commission your own inspection of the property.

Copyright of FeaturePRO.

