



Russell Road

Kensington Olympia, W14

£2,816.67 per month
(£650 per week)

A lovely two bedroom apartment within this conversion house in Kensington Olympia. Nice and bright lounge with two bedrooms, the flat is ideally suited for a couple.

Only moments away from Kensington High Street, Holland Park and Westfield.



Russell Road

Kensington Olympia, W14

- A bright apartment situated on the upper floors on this leafy street.
- 2 Bedroom, 1 Bathroom, 1 Reception Room
- Open plan and modern interiors
- Well located for the amenities of both Kensington and Hammersmith

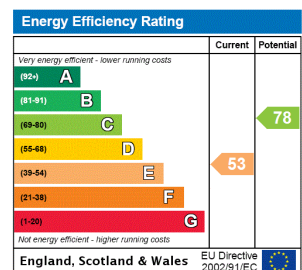


Ideally situated only moments away from Kensington Olympia station and within close proximity of Kensington High Street and Holland Park Avenue, is this bright two double bedroom top floor apartment.

Forming part of a period conversion house, the flat offers bright living space with an open-plan kitchen, two double bedrooms and a main bathroom. The property will be repainted throughout prior to the new tenancy start.

The flat further benefits of access to large communal gardens at the back. Holland Park and Westfield shopping centre are both within easy reach.

Minimum Term: 6 months
Deposit Required: £3,250.00
Local Authority: Royal Borough of Kensington & Chelsea
Council Tax Band: D
EPC Rating: E
Furnished

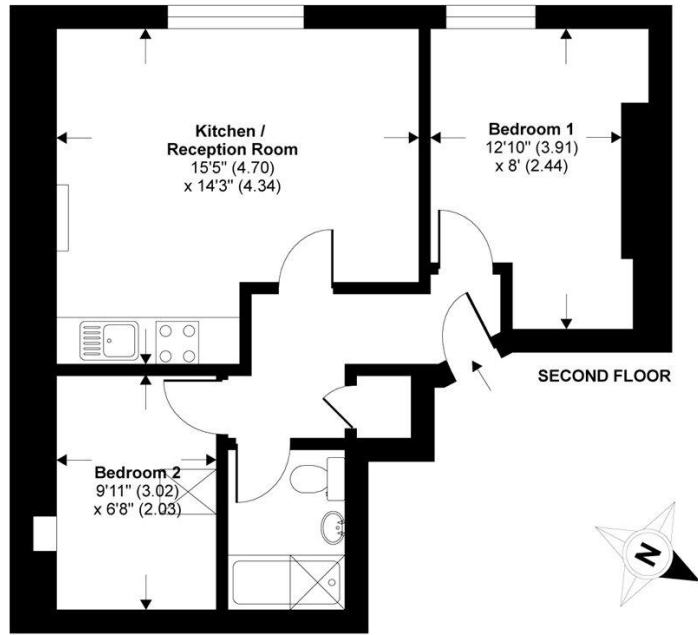


Chestertons Kensington Lettings

116 Kensington High Street
 Kensington
 London
 W8 7RW
 kensington@chestertons.co.uk
 02079377260
 chestertons.co.uk

Additional tenant charges apply (fees apply to non-AST tenancies only)
 Tenancy Agreement Fee: £300
 References per Tenant/Guarantor: £60
 Inventory check (approx. £100 – £250 inc. VAT)
chestertons.co.uk/property-to-rent/applicable-fees

Russell Road, London, W14



TOTAL GROSS INTERNAL FLOOR AREA 491 SQ FT 45.6 SQ METRES

Whilst every attempt has been made to ensure the accuracy of the floor plan contained here, measurements of doors, windows and rooms are approximate and no responsibility is taken for any error, omission or misstatement. These plans are for representation purposes only as defined by RICS Code of Measuring Practice and should be used as such by any prospective purchaser. Specifically no guarantee is given on the total square footage of the property if quoted on this plan. Any figure given is for initial guidance only and should not be relied on as a basis of valuation.

Copyright nichecom.co.uk 2016 Produced for Chestertons REF :154941

