

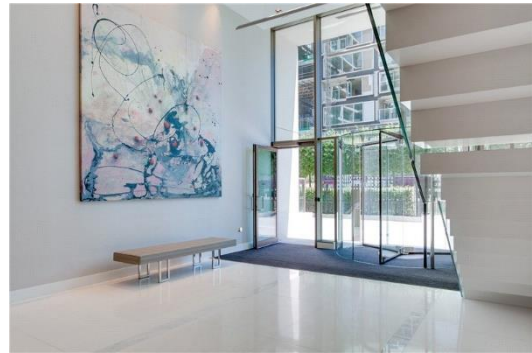


Trinity House

377 Kensington High Street, W14

£3,683.33 per month
(£850 per week)

A superb apartment in this stunning new development with concierge and world class facilities. Located on the first floor of this immaculate development and comprising one bedroom, reception and kitchen. Parking available.



Trinity House

377 Kensington High Street, W14

- One Bedroom Apartment
- Modern
- Furnished
- Balcony
- Underground Parking Available
- Access to onsite gym, spa, swimming pool and cinema room

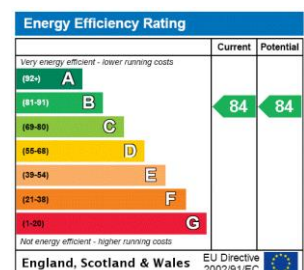


A superb apartment in this stunning new development with concierge and world class facilities. Located on the first floor of this immaculate development and comprising one bedroom, reception and kitchen.

Finished to the highest standard with great storage and offers access to its state of the art gym, spa and swimming pool.

377 Kensington High Street is a popular new build development which is located close to all local amenities of High Street Kensington, Olympia and Holland Park.

Minimum Term: 6 months
Deposit Required: £4,250.00
Local Authority: Royal Borough Of Kensington & Chelsea
Council Tax Band: F
EPC Rating: B
Furnished, Part Furnished

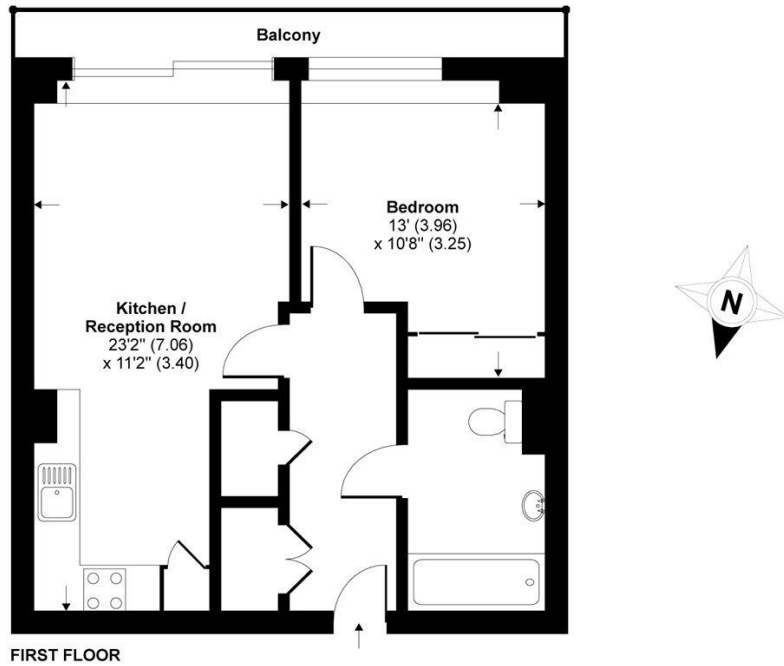


Chestertons Kensington Lettings

116 Kensington High Street
 Kensington
 London
 W8 7RW
 kensington@chestertons.co.uk
 02079377260
 chestertons.co.uk

Additional tenant charges apply (fees apply to non-AST tenancies only)
 Tenancy Agreement Fee: £300
 References per Tenant/Guarantor: £60
 Inventory check (approx. £100 – £250 inc. VAT)
chestertons.co.uk/property-to-rent/applicable-fees

Trinity House, Kensington High Street, London, W14



TOTAL GROSS INTERNAL FLOOR AREA 518 SQ FT 48.1 SQ METRES

Whilst every attempt has been made to ensure the accuracy of the floor plan contained here, measurements of doors, windows and rooms are approximate and no responsibility is taken for any error, omission or misstatement. These plans are for representation purposes only as defined by RICS Code of Measuring Practice and should be used as such by any prospective purchaser. Specifically no guarantee is given on the total square footage of the property if quoted on this plan. Any figure given is for initial guidance only and should not be relied on as a basis of valuation.

Copyright nichecom.co.uk 2014 Produced for Chesterton Humberts REF : 687565

