



# Fordham Court

9-13 De Vere Gardens, W8

£21,666.67 per month  
(£5,000 per week)

SHORT LET - An absolutely sensational two-bedroom apartment, located in Kensington's De Vere Gardens.

This property has been refurbished to exacting standards and boasts bespoke fixtures and fittings throughout, such as the walk-in wardrobe located on the apartment's mezzanine floor. The property also features three bathrooms, one of which is an en suite, and a study.

Covering approximately 1,922 sq ft., the property benefits from very high ceilings and an abundance of space. In addition to this property's grand scale, it is also perfectly situated moments from both Kensington Gardens and the many amenities of Kensington High Street.

**CHESTERTONS**



## Fordham Court

9-13 De Vere Gardens, W8

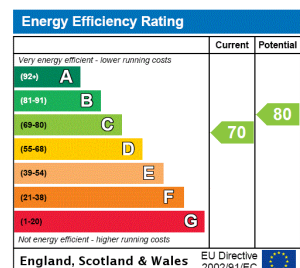
- 2 bedroom
- 2 bathroom
- Very high ceilings
- Wooden floors all throughout





‘An absolutely sensational two-bedroom apartment, located in Kensington’s De Vere Gardens...perfectly situated moments from both Kensington Gardens and the many amenities of Kensington High Street.’

**Minimum Term:** 1 months  
**Deposit Required:** £25,000.00  
**Local Authority:** Royal Borough of Kensington & Chelsea  
**Council Tax Band:** G  
**EPC Rating:** C  
**Furnished**



### Chestertons Kensington Lettings

116 Kensington High Street  
 Kensington  
 London  
 W8 7RW  
 kensington@chestertons.co.uk  
 02079377260  
 chestertons.co.uk

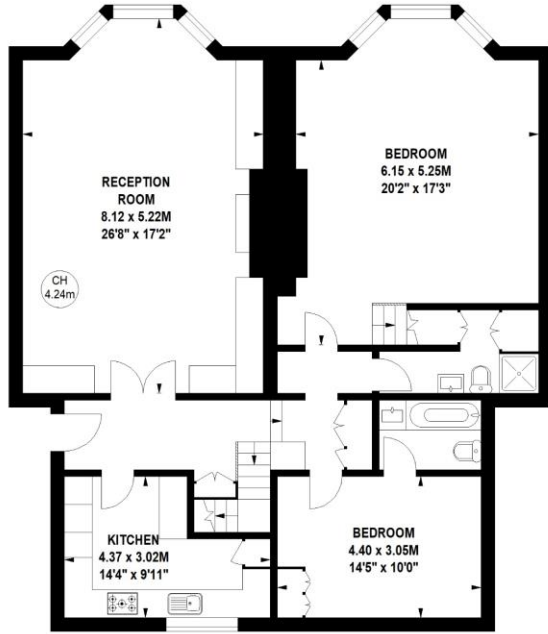
Additional tenant charges apply (fees apply to non-AST tenancies only)  
 Tenancy Agreement Fee: £300  
 References per Tenant/Guarantor: £60  
 Inventory check (approx. £100 – £250 inc. VAT)  
[chestertons.co.uk/property-to-rent/applicable-fees](http://chestertons.co.uk/property-to-rent/applicable-fees)

**Fordham Court,  
De Vere Gardens,  
Kensington, W8**

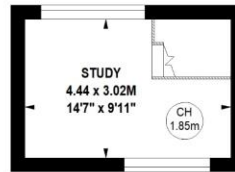
Approximate gross internal area  
178.55 sq m / 1922 sq ft



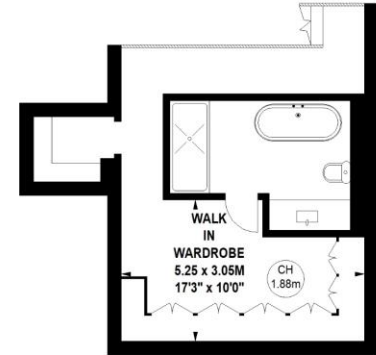
Key :  
CH - Ceiling Height



**Ground Floor**



**Mezzanine**



**Mezzanine**

Not to scale, for guidance only and must not be relied upon as a statement of fact.  
All measurements and areas are approximate only

