



Observatory Gardens

Kensington, W8

£10,616.67 per month
(£2,450 per week)

A newly refurbished two bedroom duplex with two bathrooms, very high ceilings, private outside space and its own entrance situated in this prestigious portered development in the heart of Kensington.

CHESTERTONS



Observatory Gardens

Kensington, W8

- Two Double Bedrooms
- Two Bathrooms
- Newly Refurbished
- Private Entrance
- 24hr Porter
- Large Private Patio

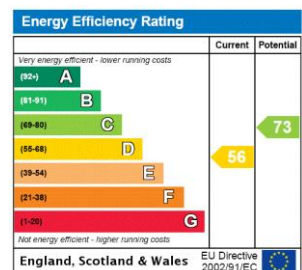


A newly refurbished two bedroom duplex with two bathrooms, very high ceilings, private outside space and its own entrance situated in this prestigious portered development in the heart of Kensington.

The accommodation is arranged over two floors and comprises a large reception room, newly fitted kitchen, two spacious bedrooms both with modern contemporary bathrooms, guest WC and private outside space.

Observatory Gardens offers 24 hour portorage and is moments from Kensington High Street.

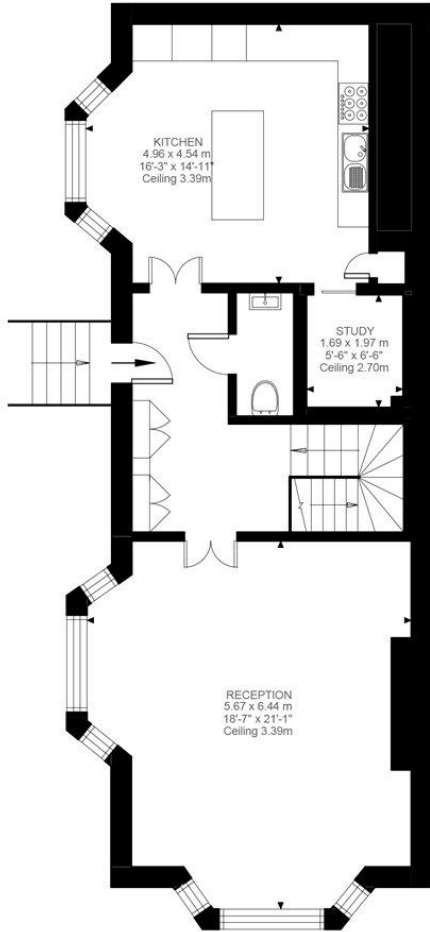
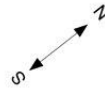
Minimum Term: 6 months
Deposit Required: £14,700.00
Local Authority: Royal Borough Of Kensington & Chelsea
Council Tax Band: H
EPC Rating: D
Furnished



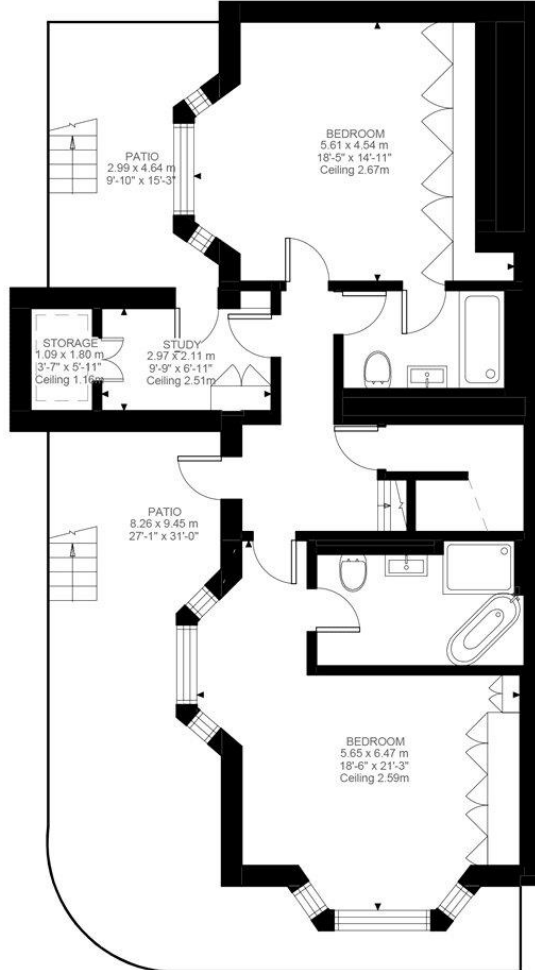
Chestertons Kensington Lettings

116 Kensington High Street
 Kensington
 London
 W8 7RW
 kensington@chestertons.co.uk
 02079377260
 chestertons.co.uk

Additional tenant charges apply (fees apply to non-AST tenancies only)
 Tenancy Agreement Fee: £300
 References per Tenant/Guarantor: £60
 Inventory check (approx. £100 – £250 inc. VAT)
chestertons.co.uk/property-to-rent/applicable-fees



Raised Ground Floor
817 ft²



Lower Ground Floor
841 ft²

Observatory Gardens, W8

Approximate Gross Internal Area
153.97 SQ.M / 1657 SQ.FT
(EXCLUDING STORAGE)
STORAGE 1.96 SQ.M / 21 SQ.FT
INCLUSIVE TOTAL AREA 155.93 SQ.M / 1678 SQ.FT

KEY: CH = Ceiling Height
Restricted Head Height

Illustration for identification purposes only. Not to scale.
Floor Plan Drawn According To RICS Guidelines.

