



Warren House

Beckford Close, W14

£3,900 per month
(£900 per week)

This bright and spacious two bedroom, two bathroom property with private balcony is located on the first floor (with lift) of this secure, portered development.



Warren House

Beckford Close, W14

- 2 bed
- 2 bath
- 2nd floor
- lift
- furnished



This bright and spacious two bedroom, two bathroom property with private balcony is located on the first floor (with lift) of this secure, portered development.

Accommodation comprises of large Reception room with private balcony off, separate eat in and fully fitted Kitchen, two large double bedrooms with ample storage (master bedroom is en-suite) and separate family bathroom.

Warren House is located close to all amenities and transport links of Earls Court and Kensington High Street.

Minimum Term: 6 months
Deposit Required: £4,500.00
Local Authority: Royal Borough of Kensington & Chelsea
Council Tax Band: G
EPC Rating: B
Furnished

| Energy Efficiency Rating | | Current | Potential |
|---|--|-------------------------|-----------|
| Very energy efficient - lower running costs | | | |
| (92-100) A | | | |
| (81-91) B | | 82 | 84 |
| (69-80) C | | | |
| (55-68) D | | | |
| (39-54) E | | | |
| (21-38) F | | | |
| (1-20) G | | | |
| Not energy efficient - higher running costs | | | |
| England, Scotland & Wales | | EU Directive 2002/91/EC | |

Chestertons Kensington Lettings

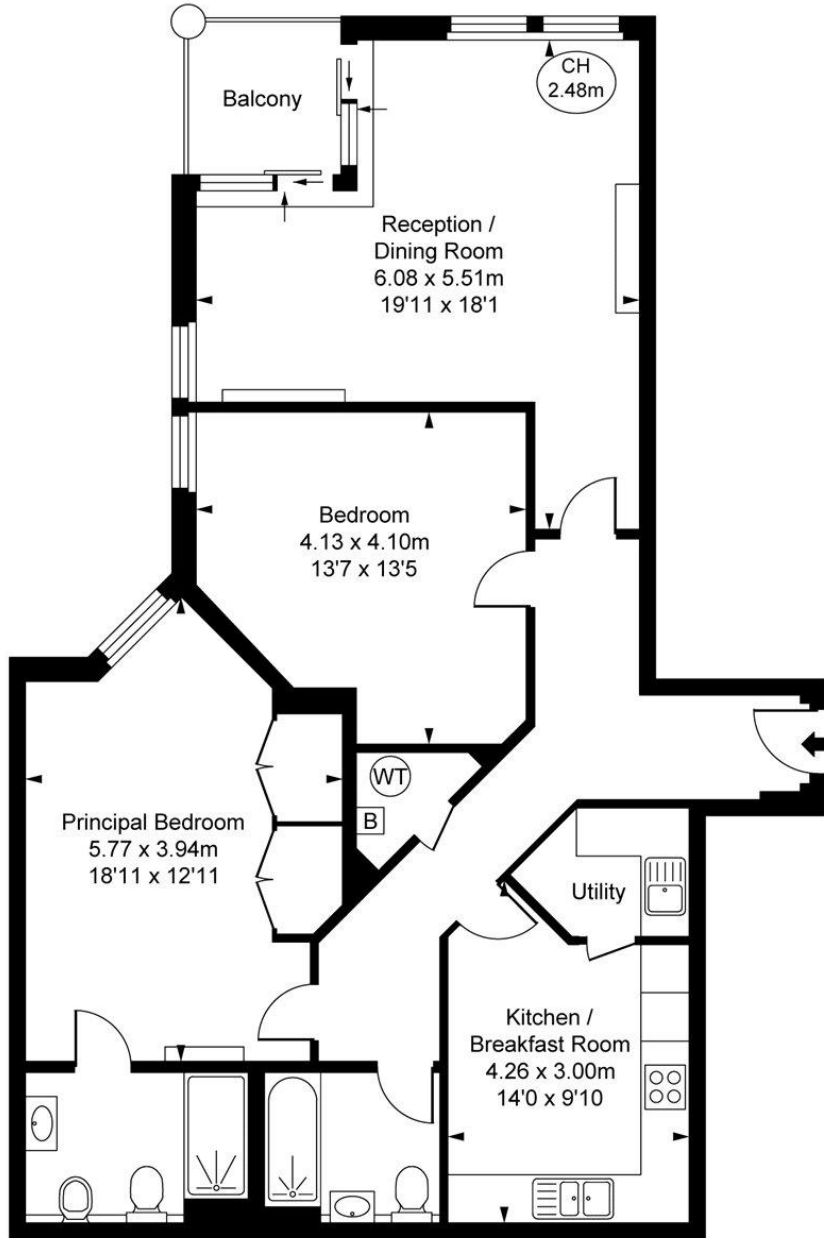
116 Kensington High Street
 Kensington
 London
 W8 7RW
 kensington@chestertons.co.uk
 02079377260
 chestertons.co.uk

Additional tenant charges apply (fees apply to non-AST tenancies only)
 Tenancy Agreement Fee: £300
 References per Tenant/Guarantor: £60
 Inventory check (approx. £100 – £250 inc. VAT)
 chestertons.co.uk/property-to-rent/applicable-fees



Warren House,
Beckford Close,
Warwick Road, W14
Approximate Gross Internal Area
98.19 sq m / 1,057 sq ft

(CH = Ceiling Heights)



First Floor

This plan is not to scale. It is for guidance and not for valuation purposes.
All measurements and areas are approximate only, and have been prepared in accordance with the current edition of the RICS Code of Measuring Practice.
© Fulham Performance

Chesterton Global Ltd trading as Chestertons for themselves and for the vendor of this property whose agents they are, give notice that (i) these particulars do not constitute any part of an offer or contract, (ii) all statements contained within these particulars are made without responsibility on the part of Chestertons or the vendor, (iii) whilst made in good faith, none of the statements contained within these particulars are to be relied upon as a statement or representation of fact, (iv) any intending purchasers must satisfy themselves by inspection or otherwise as to the correctness of each of the statements contained within these particulars, (v) the vendor does not make or give either Chestertons or any person in their employment any authority to make or give representation or warranty whatsoever in relation to this property. Wide angle lenses may be used. ©Copyright Chestertons | Chesterton Global Ltd | Registered Office 40 Connaught Street, Hyde Park, London W2 2AB Registered Company Number 05334580.



This paper is
100% recyclable