



# Albert Court

Prince Consort Road, SW7

£11,245 per month  
(£2,595 per week)

A stunning two double bedroom luxury apartment in this sought after and prestigious building by the Royal Albert Hall. There are two double bedrooms, along with two bathrooms and a separate guest loo.



# Albert Court

Prince Consort Road, SW7

- 2 double bedrooms
- 2 bathrooms
- 1 additional guest loo
- Furnished
- 24 Porter





Introducing our stunning new 2 bedroom, 2 bathroom apartment featuring a separate guest toilet.

This modern and spacious unit offers a comfortable living space with high-end finishes and amenities.

Perfect for individuals or small families looking for a stylish and convenient living arrangement.

This beautiful property is next to the popular Albert Hall and is close to amenities and transport.

**Minimum Term:** 12 months  
**Deposit Required:** £15,570.00  
**Local Authority:** Royal Borough of Kensington & Chelsea  
**Council Tax Band:**  
**EPC Rating:** To be confirmed  
**Furnished**

Energy Efficiency Rating		
	Current	Potential
Very energy efficient - lower running costs		
<b>A</b> (92-100)		
<b>B</b> (81-91)		
<b>C</b> (69-80)		
<b>D</b> (55-68)	64	80
<b>E</b> (39-54)		
<b>F</b> (21-38)		
<b>G</b> (1-20)		
Not energy efficient - higher running costs		
England, Scotland & Wales EU Directive 2002/91/EC		

### *Chestertons Kensington Lettings*

116 Kensington High Street  
 Kensington  
 London  
 W8 7RW  
[kensington@chestertons.co.uk](mailto:kensington@chestertons.co.uk)  
 02079377260  
[chestertons.co.uk](http://chestertons.co.uk)

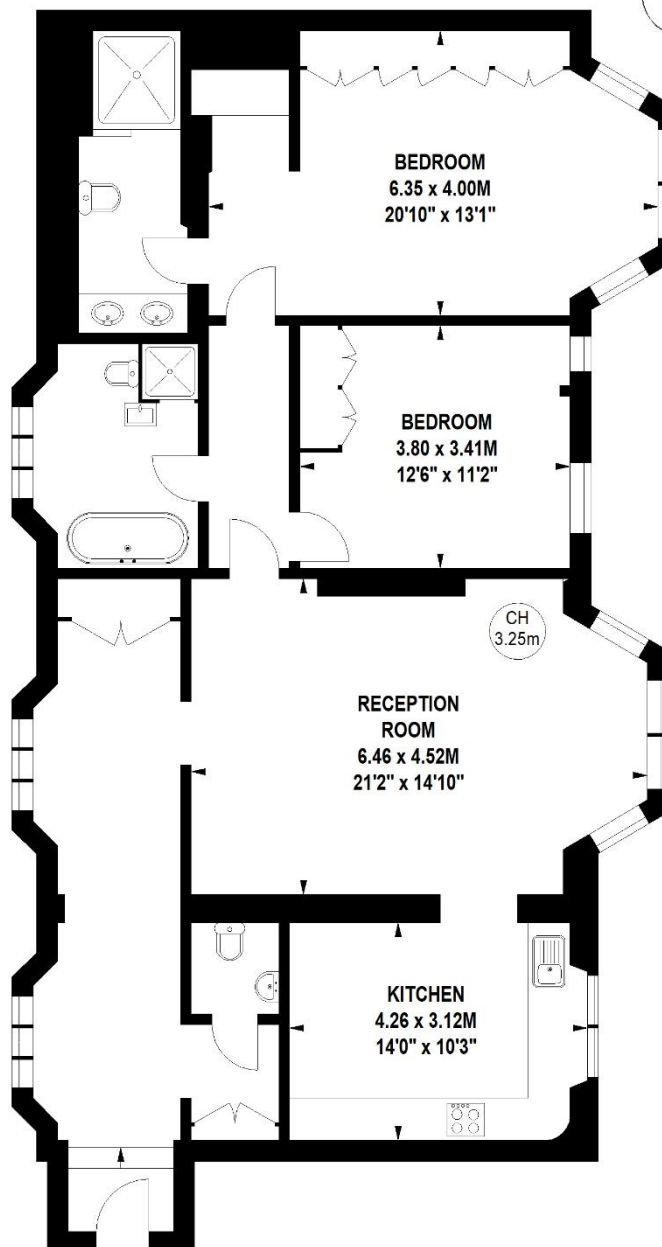
Additional tenant charges apply (fees apply to non-AST tenancies only)  
 Tenancy Agreement Fee: £300  
 References per Tenant/Guarantor: £60  
 Inventory check (approx. £100 – £250 inc. VAT)  
[chestertons.co.uk/property-to-rent/applicable-fees](http://chestertons.co.uk/property-to-rent/applicable-fees)

# Albert Court, Prince Consort Road, SW7

Approximate gross internal area

124.39 sq m / 1339 sq ft

Key :  
CH - Ceiling Height



## First Floor

Not to scale, for guidance only and must not be relied upon as a statement of fact.  
All measurements and areas are approximate only

