



Marloes Road

London, W8

£3,250 per month
(£750 per week)

The apartment offers a very large bedroom, thoughtfully positioned at the front of the apartment, bathed in natural light through the large brand new windows. The apartment has ample built-in storage.

“The photos of the property are real, however some of the furniture and furnishing items have been computer generated for illustration purposes only.”



Marloes Road

London, W8

- 1 bedroom
- 1 bathroom
- Open plan kitchen
- Breakfast table
- Newly refurbished
- Abundance of natural light



Situated in an elegant stucco-fronted building, this top-floor one-bedroom flat is meticulously renovated.

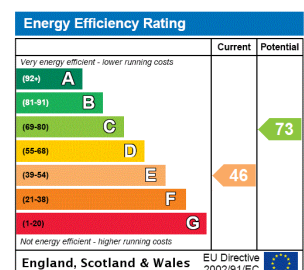
The apartment offers a very large bedroom, thoughtfully positioned at the front of the apartment, bathed in natural light through the large brand new windows. The apartment has ample built-in storage.

The open-plan kitchen and living room are located at the back of the apartment. Between the bedroom and the kitchen is a chic bathroom adorned with contemporary fixtures, finishes, and a walk-in shower.

Well located for all the shops and transport links of Gloucester Road, South Kensington, and Kensington High Street.

"The photos of the property are real, however some of the furniture and furnishing items have been computer generated for illustration purposes only."

Minimum Term: 12 months
Deposit Required: £3,750.00
Local Authority: Royal Borough of Kensington & Chelsea
Council Tax Band: E
EPC Rating: E
Unfurnished



Chestertons Kensington Lettings

116 Kensington High Street
 Kensington
 London
 W8 7RW
 kensington@chestertons.co.uk
 02079377260
 chestertons.co.uk

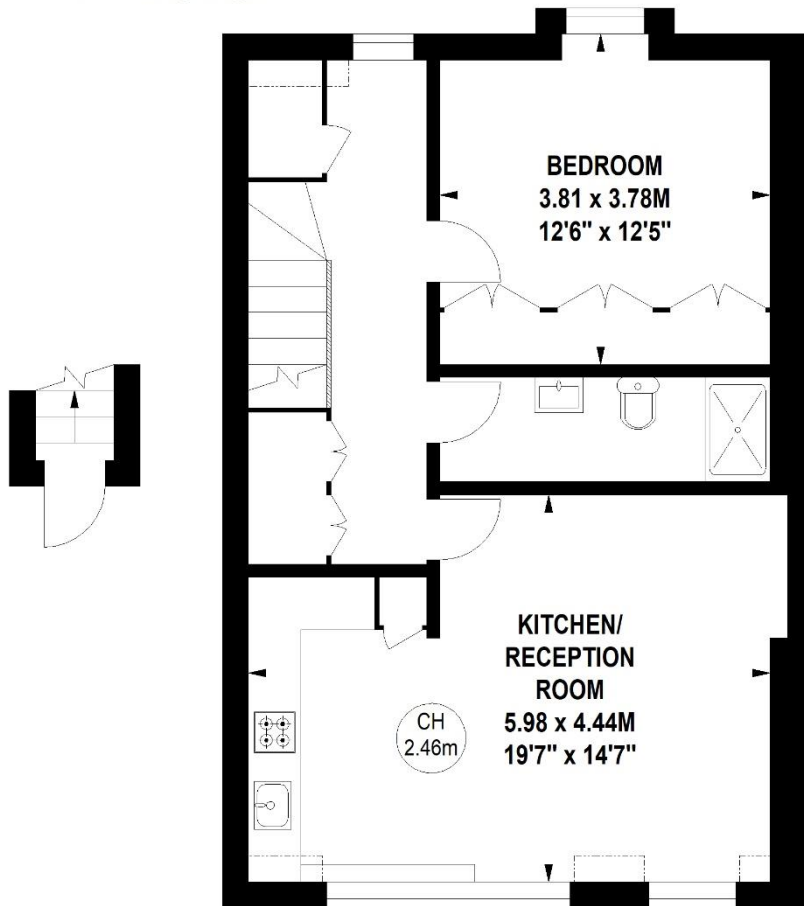
Additional tenant charges apply (fees apply to non-AST tenancies only)
 Tenancy Agreement Fee: £300
 References per Tenant/Guarantor: £60
 Inventory check (approx. £100 – £250 inc. VAT)
 chestertons.co.uk/property-to-rent/applicable-fees

Marloes Road, W8

Approximate gross internal area

58.16 sq m / 626 sq ft

Key :
CH - Ceiling Height



**Second Floor
Entrance**

Third Floor

**Not to scale, for guidance only and must not be relied upon as a statement of fact.
All measurements and areas are approximate only**

