



# Zetland House

Marloes Road, W8

£10,500 per month  
(£2,423.08 per week)

Fantastic four bedroom apartment comprising over 2,000 sq.ft. Situated on the raised ground floor of a well maintained, portered mansion block and just moments from Kensington High Street.



# Zetland House

Marloes Road, W8

- A lateral family apartment in portered block
- 4 bedrooms, beautiful double reception, eat-in kitchen
- 3 bathrooms, wood floors throughout, heating included
- Ideally located moments from Kensington High Street



Fantastic four bedroom apartment comprising over 2,000 sq.ft. Situated on the raised ground floor of a well maintained, portered mansion block and just moments from Kensington High Street.

The property comprises entry hallway, wonderful double reception, separate eat in kitchen, four double bedrooms, three stylish bathrooms. Boasting beautiful dark solid wood flooring & fitted storage throughout.

Heating and water included in rental. Located a short walk to Kensington High Street for the shops, restaurants, tube and Parks.

**Minimum Term:** months  
**Deposit Required:** £14,538.46  
**Local Authority:** Royal Borough of Kensington & Chelsea  
**Council Tax Band:** H  
**EPC Rating:** To be confirmed  
**Unfurnished**

Energy Efficiency Rating		Current	Potential
Very energy efficient - lower running costs			
(92-100)	A		
(81-91)	B		
(69-80)	C		80
(55-68)	D	61	
(39-54)	E		
(21-38)	F		
(1-20)	G		
Not energy efficient - higher running costs			
England, Scotland & Wales		EU Directive 2002/91/EC	

### Chestertons Kensington Lettings

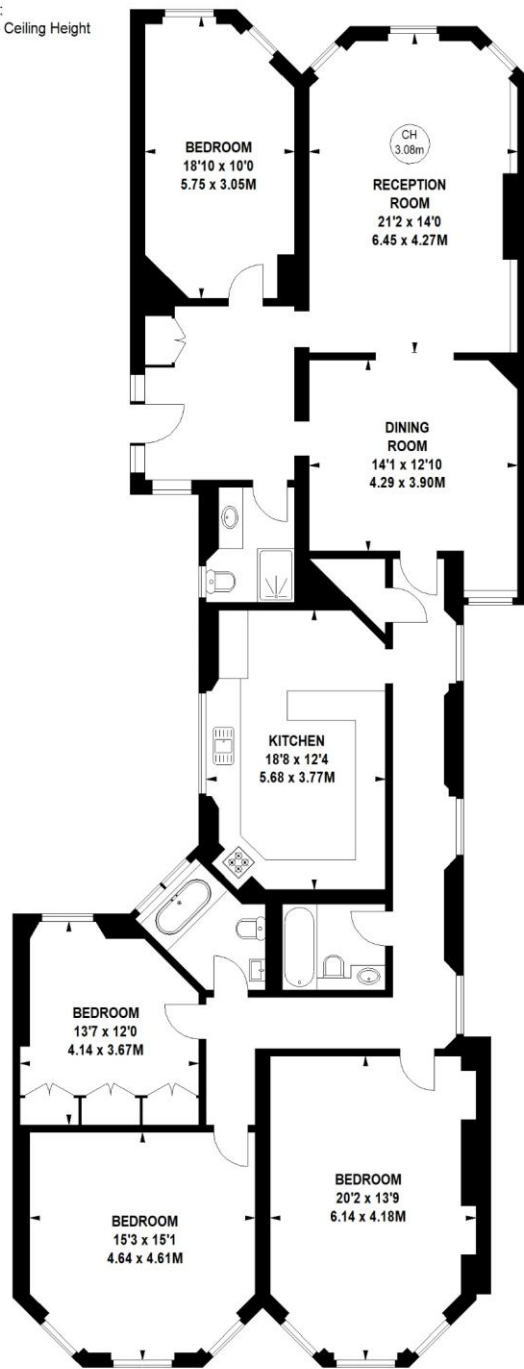
116 Kensington High Street  
 Kensington  
 London  
 W8 7RW  
 kensington@chestertons.co.uk  
 02079377260  
 chestertons.co.uk

Additional tenant charges apply (fees apply to non-AST tenancies only)  
 Tenancy Agreement Fee: £300  
 References per Tenant/Guarantor: £60  
 Inventory check (approx. £100 – £250 inc. VAT)  
 chestertons.co.uk/property-to-rent/applicable-fees

**Zetland House,  
Marloes Road, Kensington, W8**

Approximate gross internal area  
191.19 sq m / 2058 sq ft

Key :  
CH - Ceiling Height



**Raised Ground Floor**

Not to scale, for guidance only and must not be relied upon as a statement of fact.  
All measurements and areas are approximate only

