



Zetland House

Marloes Road, W8

£10,500 per month
(£2,423.08 per week)

Fantastic four bedroom apartment comprising over 2,000 sqft. Situated on the raised ground floor of a well maintained, portered mansion block and just moments from Kensington High Street.

“The photos of the property are real, however some of the furniture and furnishing items have been computer generated for illustration purposes only.”



Zetland House

Marloes Road, W8

- A lateral family apartment in portered block
- 4 bedrooms, beautiful double reception, eat-in kitchen
- 3 bathrooms, wood floors throughout, heating included
- Ideally located moments from Kensington High Street



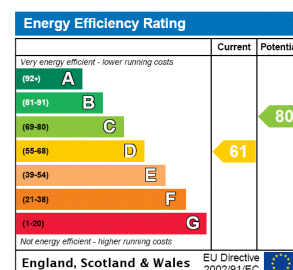
Fantastic four bedroom apartment comprising over 2,000 sqft. Situated on the raised ground floor of a well maintained, portered mansion block and just moments from Kensington High Street.

The property comprises entry hallway, wonderful double reception, separate eat in kitchen, four double bedrooms, three stylish bathrooms. Boasting beautiful dark solid wood flooring & fitted storage throughout.

Heating and water included in rental. Located a short walk to Kensington High Street for the shops, restaurants, tube and Parks.

"The photos of the property are real, however some of the furniture and furnishing items have been computer generated for illustration purposes only."

Minimum Term: 6 months
Deposit Required: £14,538.46
Local Authority: Royal Borough of Kensington & Chelsea
Council Tax Band: H
EPC Rating: To be confirmed
Unfurnished



Chestertons Kensington Lettings

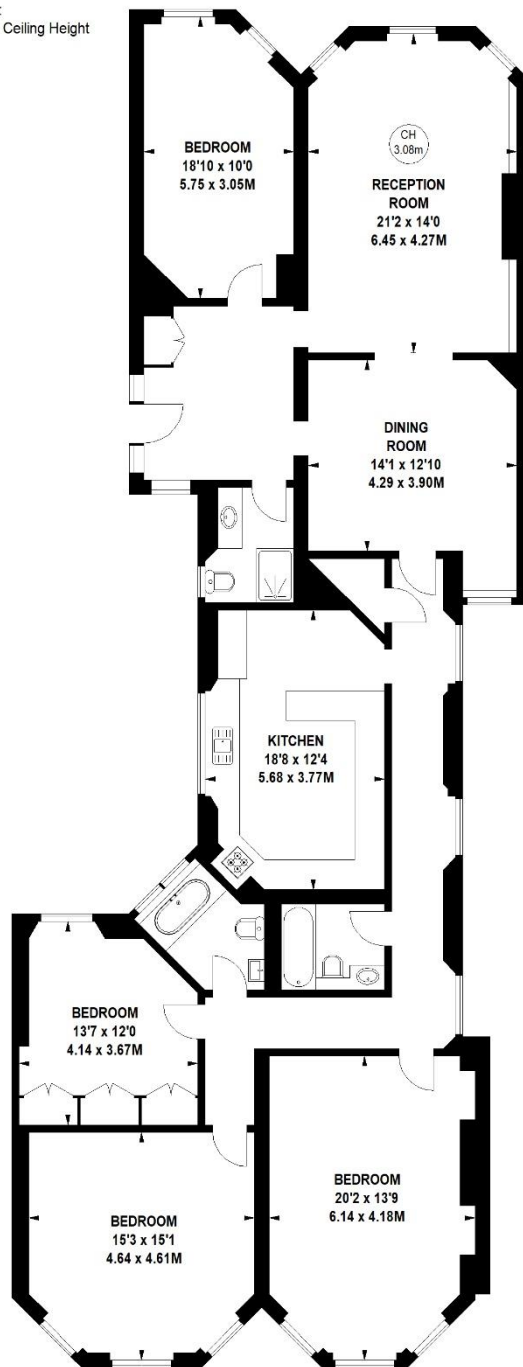
116 Kensington High Street
 Kensington
 London
 W8 7RW
kensington@chestertons.co.uk
 02079377260
chestertons.co.uk

Additional tenant charges apply (fees apply to non-AST tenancies only)
 Tenancy Agreement Fee: £300
 References per Tenant/Guarantor: £60
 Inventory check (approx. £100 – £250 inc. VAT)
chestertons.co.uk/property-to-rent/applicable-fees

Zetland House, Marloes Road, Kensington, W8

Approximate gross internal area
191.19 sq m / 2058 sq ft

Key :
CH - Ceiling Height



Raised Ground Floor

Not to scale, for guidance only and must not be relied upon as a statement of fact.
All measurements and areas are approximate only

