



# Iverna Court

Kensington, W8

£9,360 per month  
(£2,160 per week)

An outstanding three bedroom apartment finished to an exemplary specification throughout. Offering the highest standard finishes and bespoke light fittings.

CHESTERTONS





# Iverna Court

## Kensington, W8

- Three Double Bedrooms, Two Bathrooms
- Outstanding Finish Throughout
- Porter and Lift Access
- Moments from Kensington High Street
- 0.3 miles from Hyde Park and Kensington Palace Gardens



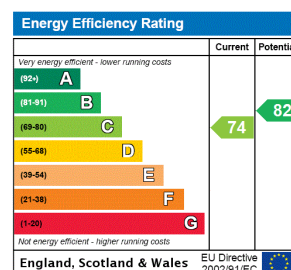


An outstanding three bedroom apartment finished to an exemplary specification throughout. Offering the highest standard finishes and bespoke light fittings. Situated in a portered, red brick mansion block in the heart of Kensington.

The apartment offers a spectacular panelled hallway with wooden flooring and breath-taking light fixture, a dual reception room and separate fully fitted kitchen. The master suite offers a large walk in wardrobe and stunning en-suite. The apartment offers a further two double bedrooms, family bathroom and small balcony.

Located on the second floor of an impressive portered building, with lift and access to a communal garden square. The building is situated just off of Wright's Lane, only moments from Kensington High Street, many eateries, restaurants and the tube. The green spaces of Kensington Palace Gardens, Hyde Park and Holland Park are all only 0.3 miles away.

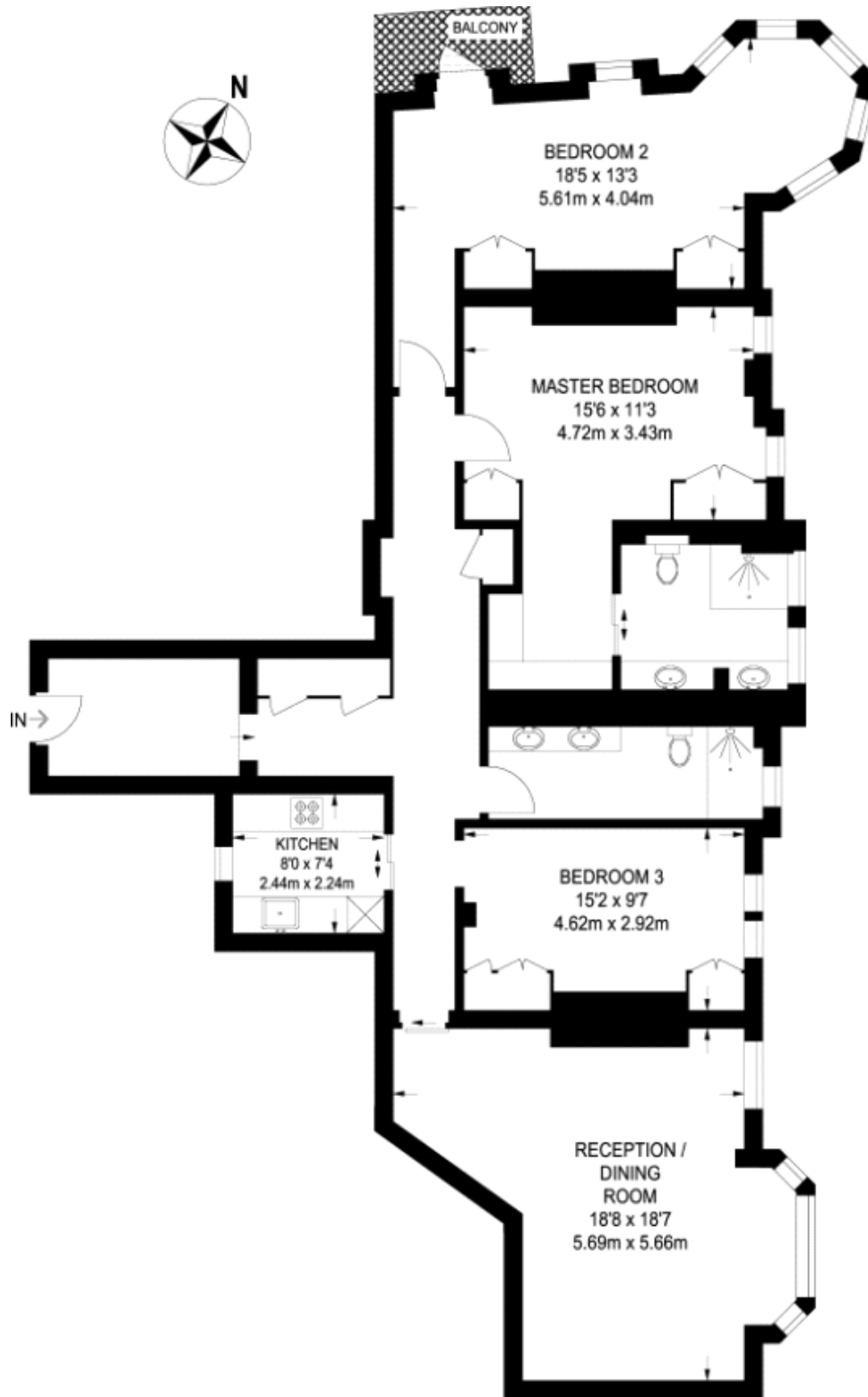
**Minimum Term:** 12 months  
**Deposit Required:** £12,960.00  
**Local Authority:** Royal Borough of Kensington & Chelsea  
**Council Tax Band:** G  
**EPC Rating:** C  
**Furnished, Part Furnished**



### *Chestertons Kensington Lettings*

116 Kensington High Street  
 Kensington  
 London  
 W8 7RW  
[kensington@chestertons.co.uk](mailto:kensington@chestertons.co.uk)  
 02079377260  
[chestertons.co.uk](http://chestertons.co.uk)

Additional tenant charges apply (fees apply to non-AST tenancies only)  
 Tenancy Agreement Fee: £300  
 References per Tenant/Guarantor: £60  
 Inventory check (approx. £100 – £250 inc. VAT)  
[chestertons.co.uk/property-to-rent/applicable-fees](http://chestertons.co.uk/property-to-rent/applicable-fees)



**SECOND FLOOR  
(HALF LANDING)**  
**1492 SQ FT / 138.6 SQ M**

