



Marlborough Court

Pembroke Road, W8

£3,000 per month
(£692.31 per week)

A recently refurbished two bedroom apartment situated on the 1st floor of this well run portered block with lift. Internet connection is included in the rental and also Heating & Hot water.

Ideally located for the amenities of Kensington High Street.

CHESTERTONS



Marlborough Court

Pembroke Road, W8

- A newly refurbished two bedroom apartment situated on the 2nd floor With lift
- Finished to a a high standard with attention to detail including quality furnishings
- Boasts lovely open plan kitchen, dining and reception room
- Internet connection is included in the rental and also Heating & Hot water



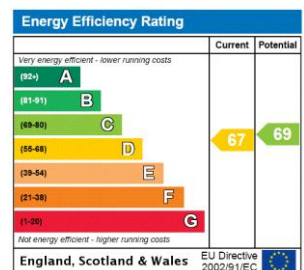
A recently refurbished two bedroom apartment situated on the 2nd floor of this well run Portered block with lift.

The property has been finished to a high standard with attention to detail including quality furnishings and boasts lovely open plan kitchen, dining and reception room.

Spacious Master bedroom looking over the back of the building and the second bedroom is a smaller double.

There is a stylish shower room and good storage throughout. Internet connection is included in the rental and also Heating & Hot water. Ideally located for the amenities of Kensington High Street.

Minimum Term: 6 months
Deposit Required: £3,461.54
Local Authority: Royal Borough of Kensington & Chelsea
Council Tax Band: F
EPC Rating: D
Furnished, Part Furnished



Chestertons Kensington Lettings

116 Kensington High Street
 Kensington
 London
 W8 7RW
 kensington@chestertons.co.uk
 02079377260
 chestertons.co.uk

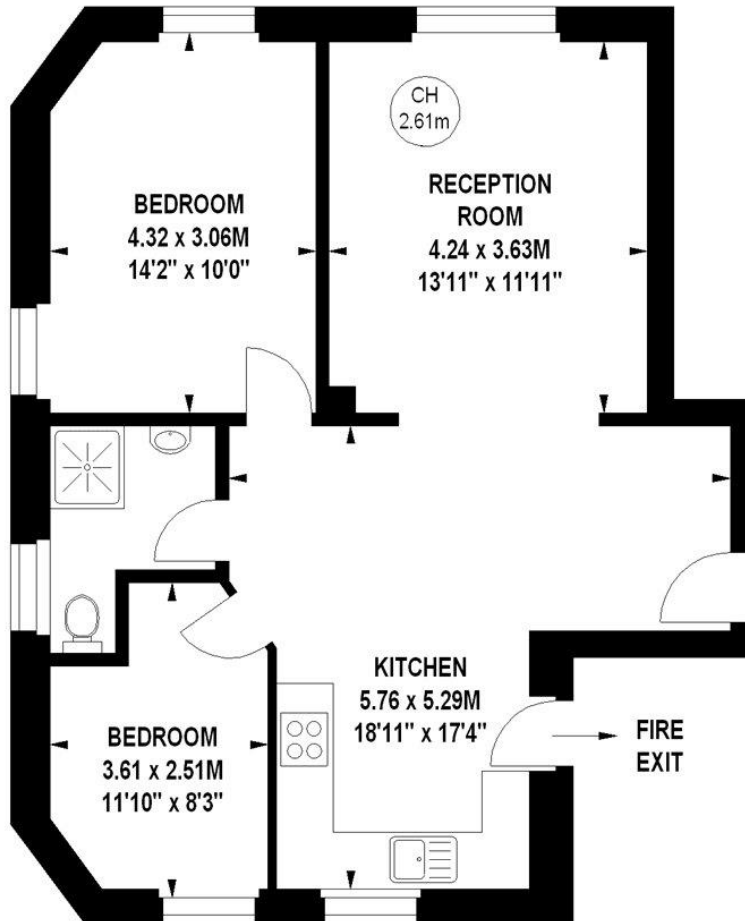
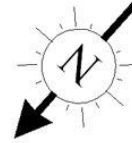
Additional tenant charges apply (fees apply to non-AST tenancies only)
 Tenancy Agreement Fee: £300
 References per Tenant/Guarantor: £60
 Inventory check (approx. £100 – £250 inc. VAT)
chestertons.co.uk/property-to-rent/applicable-fees

Marlborough Court, W8

Approximate gross internal area

65.03 sq m / 700 sq ft

Key :
CH - Ceiling Height



First Floor

The floor plan is not to scale and measurements and areas shown are approximate and therefore should be used for illustrative purposes only.

The plan has been prepared in accordance with the RICS code of Measuring Practice and whilst we have confidence in the information produced, it must not be relied on.

If there is any aspect of particular importance, you should carry out or commission your own inspection of the property.

Copyright of FeaturePRO.

