



# Englands Lane

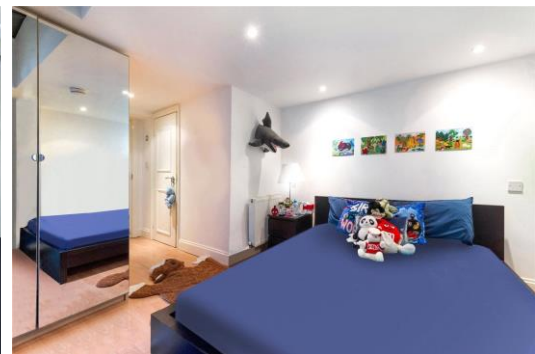
Belsize Park, NW3

£2,500 per month  
(£576.92 per week)

\*VIDEO TOUR AVAILABLE\*. A lovely 2 bedroom apartment on the lower ground floor of a period building with wood floors, decked patio and separate study area in Belsize Park.

CHESTERTONS





# Englands Lane

Belsize Park, NW3

- A Modern Lower Ground Floor Apartment in Period Building
- 2 Bedrooms, 2 Bathrooms, Reception, Kitchen,
- Wood Floors, Decked Patio, Study Area
- Situated in the Heart of Belsize Park, Short Walk to Shops/Restaurants of England Lane





\*VIDEO TOUR AVAILABLE\*. A lovely modern 2 bedroom apartment on the lower ground floor of this period building benefiting from wood flooring, decked patio and separate study area, plenty of storage. The property is situated in this excellent location in the heart of Belsize Park (Northern Line) and all the shopping amenities of England Lane. Accommodation comprises reception room with French doors leading to the patio, open plan fully fitted kitchen, double bedroom with doors leading to 2 alcove areas, en-suite bathroom and fitted wardrobes, further double bedroom with partial glass roof, built in wardrobes, patio doors leading onto decked patio and en-suite shower room, utility and storage room.

**Minimum Term:** 12 months  
**Deposit Required:** £2,884.62  
**Local Authority:** London Borough Of Camden  
**Council Tax Band:** D  
**EPC Rating:** C  
**Furnished**

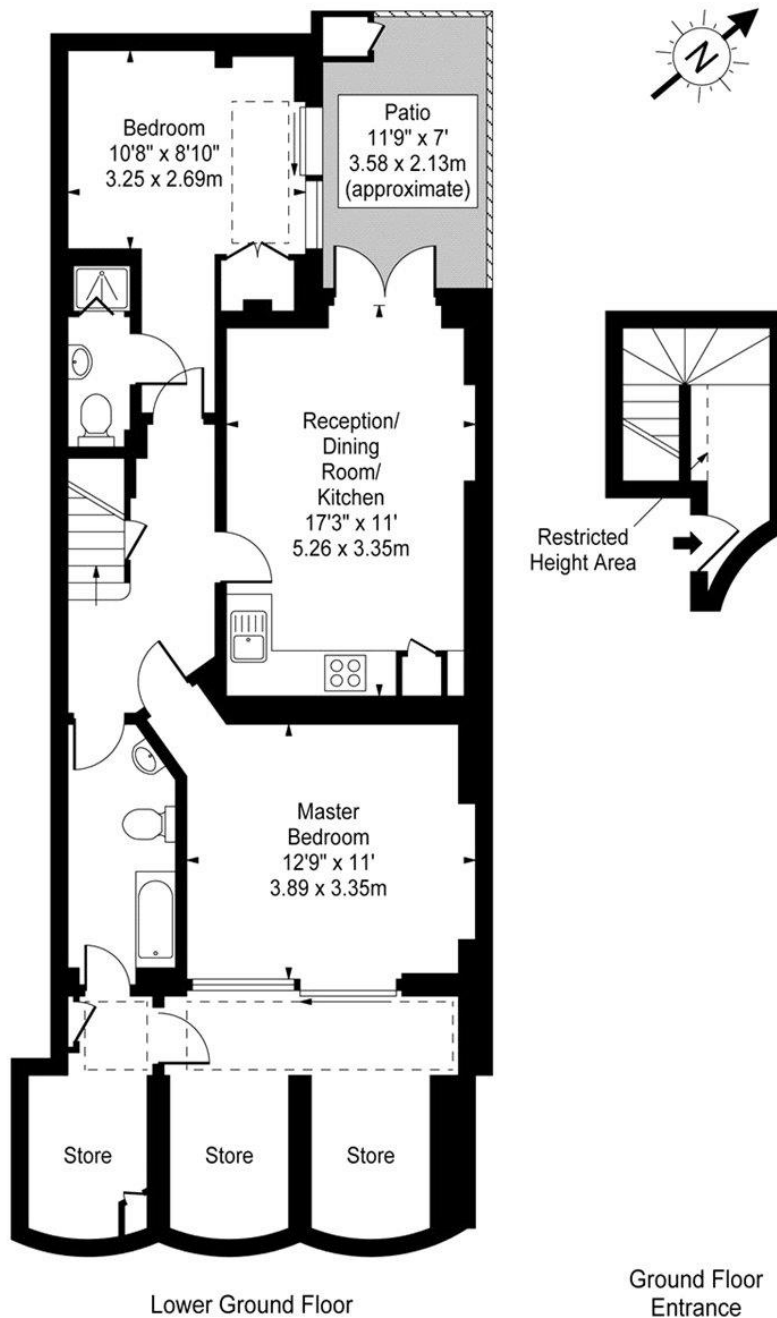
Energy Efficiency Rating		
	Current	Potential
Very energy efficient - lower running costs		
<b>A</b> (91-100)		
<b>B</b> (81-90)		
<b>C</b> (69-80)	74	79
<b>D</b> (55-68)		
<b>E</b> (39-54)		
<b>F</b> (21-38)		
<b>G</b> (1-20)		
Not energy efficient - higher running costs		
England, Scotland & Wales EU Directive 2002/91/EC		

### Chestertons Hampstead Lettings

55-56 Hampstead High Street  
Hampstead  
London  
NW3 1QH  
hampsteadlettingsusers@chestertons.co.uk  
02077941125  
chestertons.co.uk

Additional tenant charges apply (fees apply to non-AST tenancies only)  
Tenancy Agreement Fee: £300  
References per Tenant/Guarantor: £60  
Inventory check (approx. £100 – £250 inc. VAT)  
chestertons.co.uk/property-to-rent/applicable-fees

**Englands Lane,  
Belsize Park, NW3**



**Approx Gross Internal Area    895 Sq Ft - 83.14 Sq M**  
(Including Restricted Height Area & Stores)

For Illustration Purposes Only - Not To Scale

[www.goldlens.co.uk](http://www.goldlens.co.uk)

Prepared for Chestertons

Ref. No. 002689

