



Belsize Park Gardens

Belsize Park, NW3

£4,996 per month
(£1,152.92 per week)

VIDEO TOUR AVAILABLE. A beautiful spacious 3 double bedroom duplex apartment with decked terrace in Victorian conversion boasting high ceilings and original wood floors and cream carpets. The property is situated in this premier road in Belsize Park and comprises 2nd floor: grand reception room and dining area, open plan fully fitted eat in kitchen, guest cloakroom 3rd floor: master bedroom with fitted wardrobes with direct access to a decked terrace, painted wood floors and loft storage, large double bedroom with en-suite shower room and loft storage, double bedroom, family bathroom with skylight.



Belsize Park Gardens

Belsize Park, NW3

- Beautiful Duplex Apartment on 2nd/3rd Floors in Period Building
- 3 Bedrooms, 2 Bathrooms, Reception, Open Plan Fully Fitted Eat In Kitchen
- Decked Terrace, Wood Floors, High Ceilings
- Situated in the Heart of Belsize Park, Walking Distance to the Shops/Restaurants



Minimum Term: 18 months
Deposit Required: £6,917.54
Local Authority: London Borough Of Camden
Council Tax Band: G
EPC Rating: D
Furnished

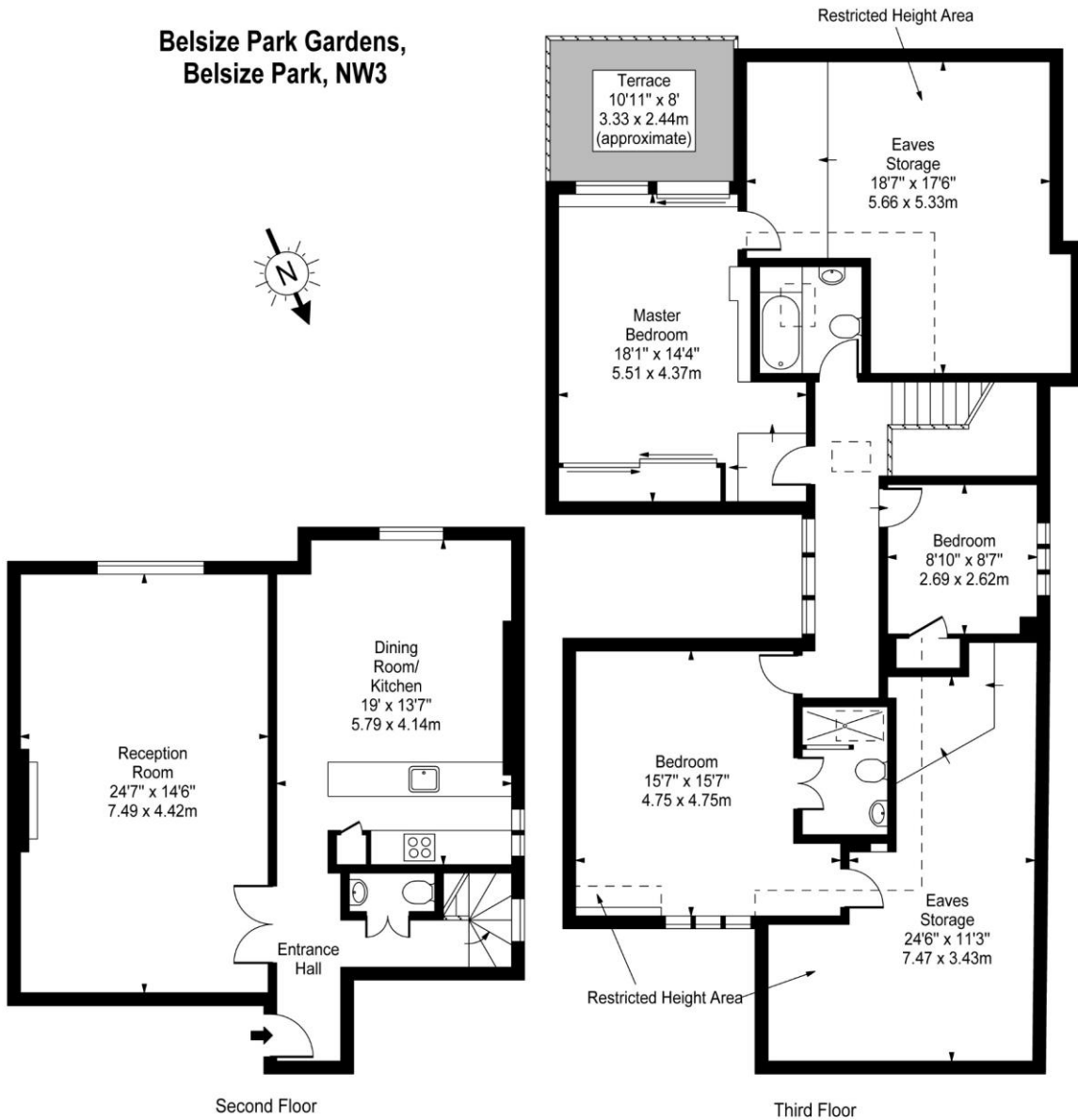
Energy Efficiency Rating		Current	Potential
Very energy efficient - lower running costs			
(92-100)	A		
(81-91)	B		
(69-80)	C		
(55-68)	D	59	69
(39-54)	E		
(21-38)	F		
(1-20)	G		
Not energy efficient - higher running costs			
England, Scotland & Wales		EU Directive 2002/91/EC	

Chestertons Hampstead Lettings

55-56 Hampstead High Street
 Hampstead
 London
 NW3 1QH
 hampstead@chestertons.co.uk
 02077941125
 chestertons.co.uk

Additional tenant charges apply (fees apply to non-AST tenancies only)
 Tenancy Agreement Fee: £300
 References per Tenant/Guarantor: £60
 Inventory check (approx. £100 – £250 inc. VAT)
chestertons.co.uk/property-to-rent/applicable-fees

**Belsize Park Gardens,
Belsize Park, NW3**



Approx Gross Internal Area 2048 Sq Ft - 190.26 Sq M
(Including Restricted Height Area & Eaves Storages)

For Illustration Purposes Only - Not To Scale
www.goldlens.co.uk
Prepared for Chestertons
Ref. No. 008340M

