



# Cresta House

133 Finchley Road, NW3

£3,250 per month  
(£750 per week)

A beautiful 2 bedroom duplex apartment on the 7th/8th floors of a modern purpose built block with lift and concierge. The property boasts air conditioning as well as double glazing and is situated adjacent to Swiss Cottage (Jubilee Line). Accommodation comprises 7th floor: 2 double bedrooms, family bathroom, 2 balconies 8th floor: reception room with direct access to a balcony, open plan fully fitted eat in kitchen, shower room.



# Cresta House

133 Finchley Road, NW3

- A Beautiful Duplex Apartment on the 7th/8th Floors in Modern Purpose Built Block
- 2 Bedrooms, 2 Bathrooms, Reception, Eat In Kitchen
- 3 Balconies, Air Conditioning, Lift, Concierge, Underground Parking Under Separate Negotiation
- Adjacent to the Amenities of Swiss Cottage(Jubilee Line)





**Minimum Term:** 18 months  
**Deposit Required:** £3,750.00  
**Local Authority:** London Borough Of Camden  
**Council Tax Band:** G  
**EPC Rating:** C  
**Furnished, Unfurnished**

Energy Efficiency Rating		
	Current	Potential
Very energy efficient - lower running costs		
<b>A</b> (92-100)		
<b>B</b> (81-91)		
<b>C</b> (69-80)	77	81
<b>D</b> (55-68)		
<b>E</b> (39-54)		
<b>F</b> (21-38)		
<b>G</b> (1-20)		
Not energy efficient - higher running costs		
England, Scotland & Wales		EU Directive 2002/91/EC

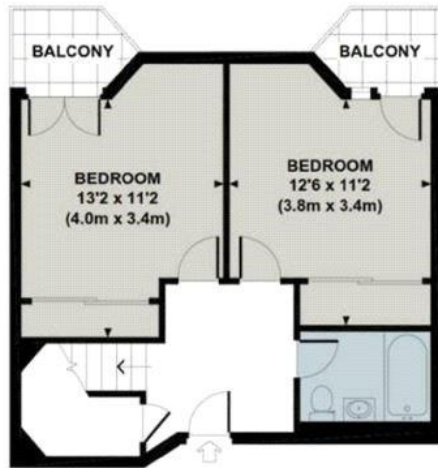
### Chestertons Hampstead Lettings

55-56 Hampstead High Street  
 Hampstead  
 London  
 NW3 1QH  
[hampstead@chestertons.co.uk](mailto:hampstead@chestertons.co.uk)  
 02077941125  
[chestertons.co.uk](https://www.chestertons.co.uk)

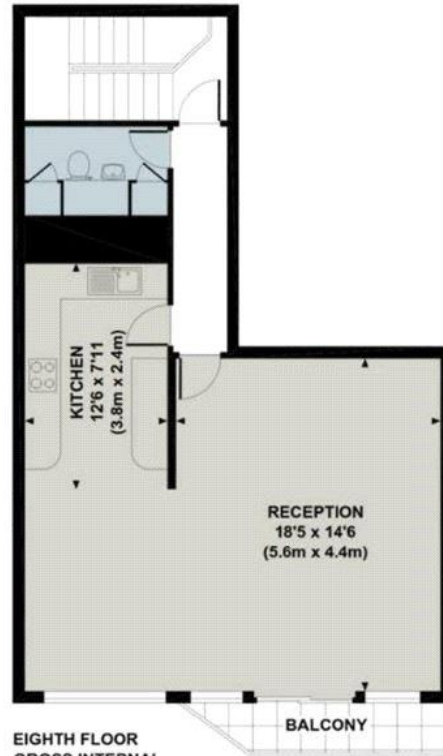
Additional tenant charges apply (fees apply to non-AST tenancies only)  
 Tenancy Agreement Fee: £300  
 References per Tenant/Guarantor: £60  
 Inventory check (approx. £100 – £250 inc. VAT)  
[chestertons.co.uk/property-to-rent/applicable-fees](https://www.chestertons.co.uk/property-to-rent/applicable-fees)

## CRESTA HOUSE

Approximate Gross Internal Area 1075 sq ft / 99.9 sq m



SEVENTH FLOOR  
GROSS INTERNAL  
FLOOR AREA 442 SQ FT



EIGHTH FLOOR  
GROSS INTERNAL  
FLOOR AREA 633 SQ FT

Although every attempt has been made to ensure accuracy, all measurements are approximate.  
The floor plan's for illustrative purposes only and not to scale. Measured in accordance to RICS standards.  
DE-PHOTOGRAPHY.NET

