



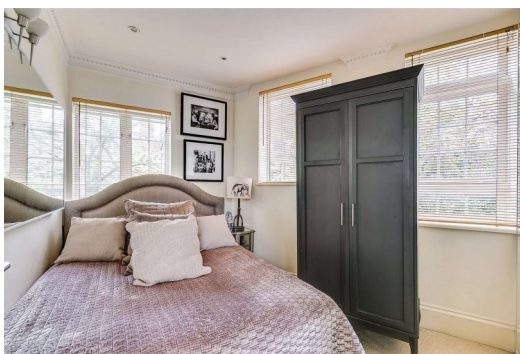
# The Mount

## Hampstead, NW3

£1,850 per week  
(£8,016.67 pcm)

\*VIDEO TOUR AVAILABLE\*. Short Let. An immaculate 2 bedroom 1st floor apartment with its own entrance benefiting from wood floors and a beautiful decked terrace situated in this excellent location in the heart of Hampstead Village Accommodation comprises reception room leading onto the dining area, fully fitted kitchen, master bedroom with fitted wardrobes, single bedroom and family bathroom.





# The Mount

## Hampstead, NW3

- Short Let. An Immaculate 1st Floor Apartment With Own Entrance
- 2 Bedrooms, 1 Bathroom, Reception, Kitchen
- Beautiful Decked Terrace, Wood Floors
- Situated in Excellent Location in the Heart of Hampstead Village





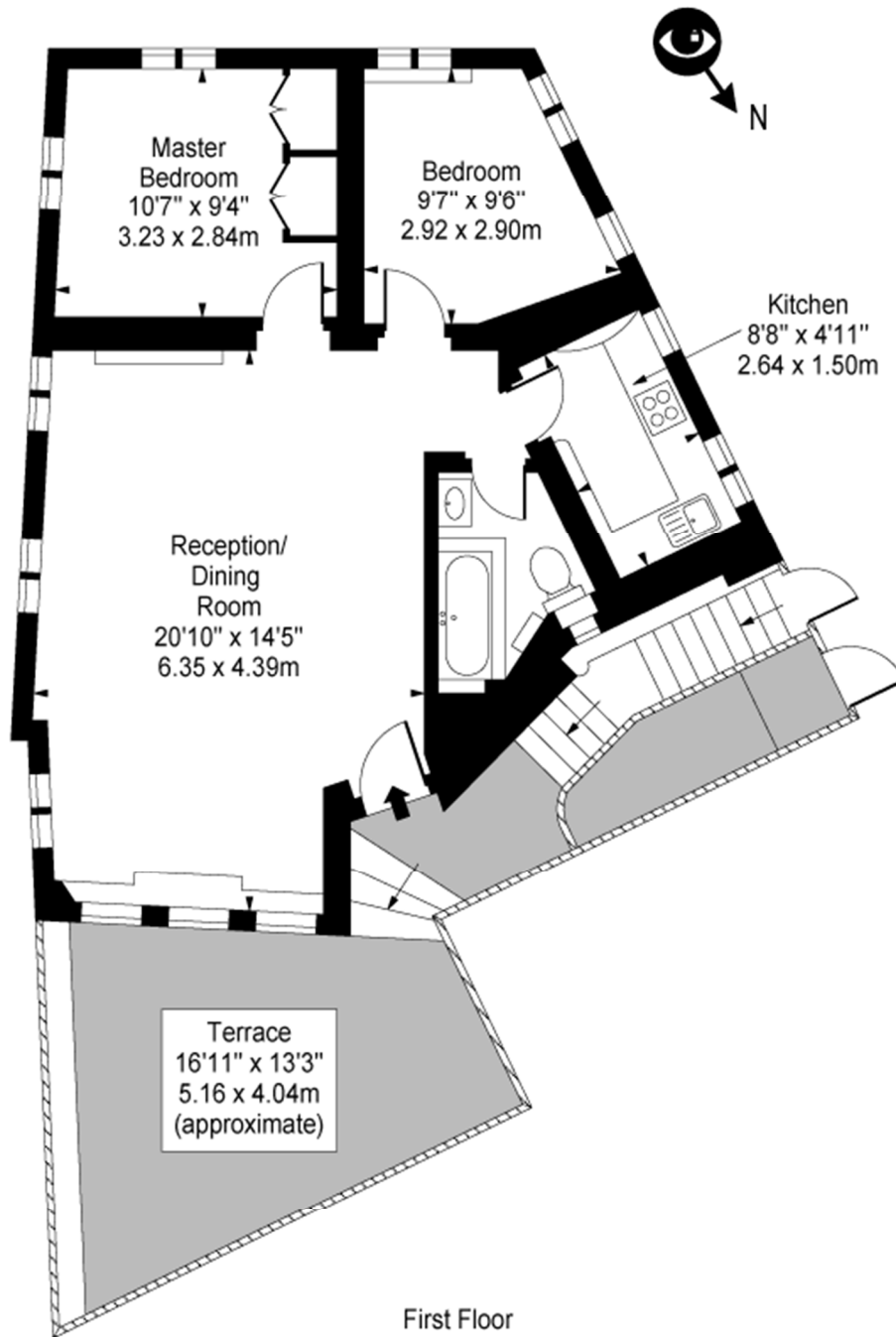
**Tenure:** To be advised  
**Furnished, Unfurnished**

| Energy Efficiency Rating                    |         |                         |
|---|---------|-------------------------|
|   | Current | Potential               |
| Very energy efficient - lower running costs |         |                         |
| (92+) <b>A</b>                              |         |                         |
| (81-91) <b>B</b>                            |         |                         |
| (69-80) <b>C</b>                            | 78      | 78                      |
| (55-68) <b>D</b>                            |         |                         |
| (39-54) <b>E</b>                            |         |                         |
| (21-38) <b>F</b>                            |         |                         |
| (1-20) <b>G</b>                             |         |                         |
| Not energy efficient - higher running costs |         |                         |
| England, Scotland & Wales                   |         | EU Directive 2002/91/EC |

### *Chestertons Hampstead Lettings*

55-56 Hampstead High Street  
Hampstead  
London  
NW3 1QH  
lettings.hampstead@chestertons.com  
02077941125  
chestertons.com

# The Mount, Hampstead, NW3



**Approx Gross Internal Area 585 Sq Ft - 54.35 Sq M**

For Illustration Purposes Only - Not To Scale

Floor Plan by [www.bpmmediagroup.com](http://www.bpmmediagroup.com)

Ref. No. P54329

