

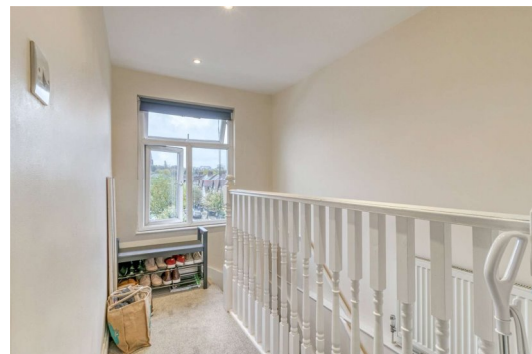


Finchley Road

Temple Fortune, NW11

£275 per week
(£1,191.67 pcm)

VIDEO TOUR AVAILABLE. A delightful 2 bedroom top floor apartment in this period conversion situated in this excellent location in Temple Fortune, walking distance to the shops and amenities and underground links of Golders Green (Northern Line). Accommodation comprises reception room, open plan kitchen, 2 bedrooms, bathroom.



Finchley Road

Temple Fortune, NW11

- A Delightful Top Floor Apartment in Period Building
- 2 Bedrooms, 1 Bathroom, Reception, Open Plan Kitchen
- Situated in Excellent Location in Temple Fortune, Walking Distance to the Shops/Amenities and Underground Links of Golders Green (Northern Line)



Tenure: To be advised
Unfurnished

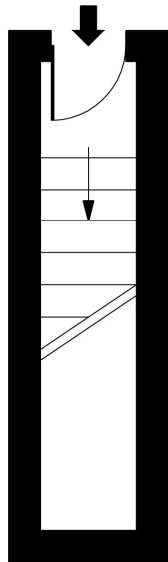
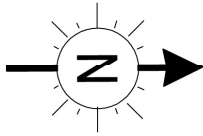
Energy Efficiency Rating		
	Current	Potential
Very energy efficient - lower running costs		
A (92-100)		
B (81-91)		
C (69-80)	73	78
D (55-68)		
E (39-54)		
F (21-38)		
G (1-20)		
Not energy efficient - higher running costs		
England, Scotland & Wales		EU Directive 2002/91/EC

Chestertons Hampstead Lettings

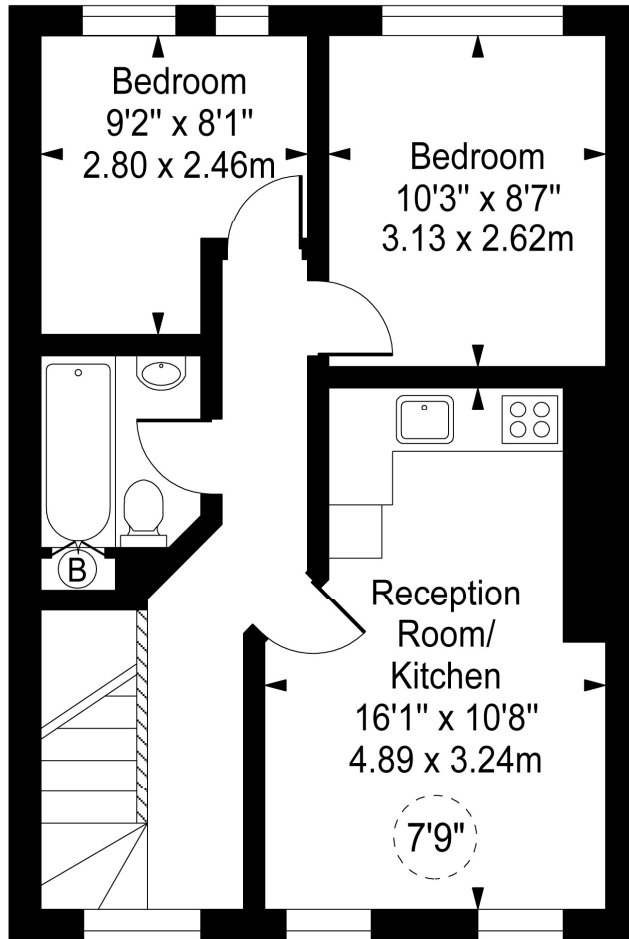
55-56 Hampstead High Street
 Hampstead
 London
 NW3 1QH
 lettings.hampstead@chestertons.com
 02077941125
 chestertons.com

Finchley Road, Temple Fortune, NW11

 - Ceiling Height



First Floor
Entrance



Second Floor

Approx Gross Internal Area **488 Sq Ft - 45.34 Sq M**

For Illustration Purposes Only - Not To Scale

www.goldlens.co.uk

Prepared for Chestertons

Ref. No. 013661MiV

