



West Heath Road

Hampstead, NW3

£3,750 per month
(£865.38 per week)

A stunning 2 double bedroom apartment with its own entrance on the lower ground floor of this beautiful detached Tudor development with private patio, off street parking and communal gardens, boasting wood floors throughout and carpets in the bedrooms as well as plenty of storage. Accommodation comprises reception room with doors leading directly onto the patio and communal gardens, open plan fully fitted kitchen with Bosch appliances, master bedroom with fitted wardrobes and en-suite wet room, double bedroom with fitted wardrobes, family bathroom, utility/storage room. Sole Agent.

CHESTERTONS



West Heath Road

Hampstead, NW3

- A Newly Built Apartment in Beautiful Tudor Development With its Own Entrance
- 2 Bedrooms, 2 Bathrooms, Reception, Open Plan Fully Fitted Kitchen
- Wood Floors, Private Patio, Communal Gardens, Off Street Parking,
- Situated Excellently for Open Spaces of Hampstead Heath, Golders Hill Park, Short Walk to Amenities of Golders Green Underground Station (Northern Line) and Hampstead (Northern Line)



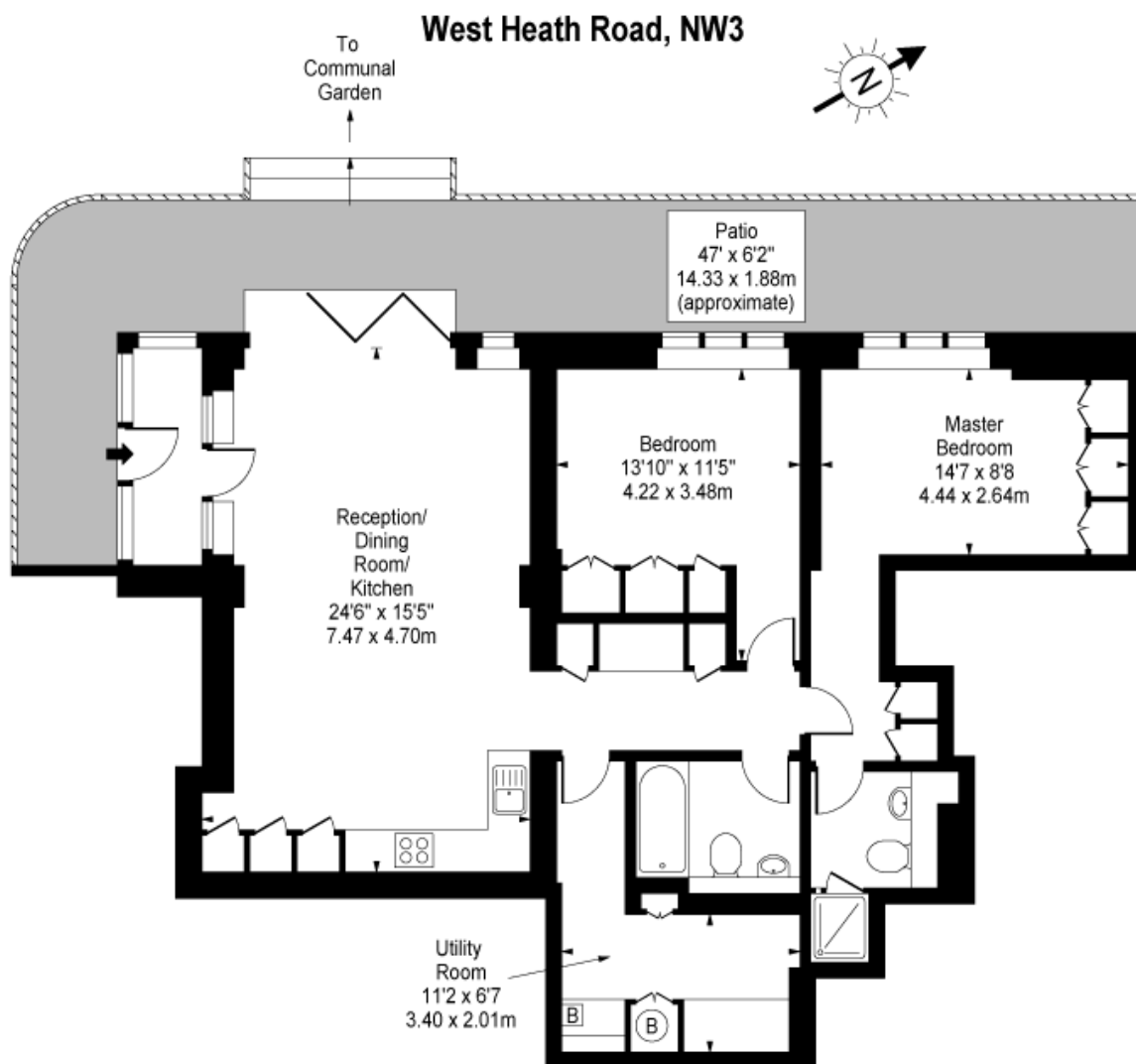
Minimum Term: 12 months
Deposit Required: £4,326.92
Local Authority: London Borough Of Barnet
Council Tax Band: F
EPC Rating: C
Unfurnished

Energy Efficiency Rating		
	Current	Potential
Very energy efficient - lower running costs		
A (92-100)		
B (81-91)		
C (69-80)	76	76
D (55-68)		
E (39-54)		
F (21-38)		
G (1-20)		
Not energy efficient - higher running costs		
England, Scotland & Wales		EU Directive 2002/91/EC

Chestertons Hampstead Lettings

55-56 Hampstead High Street
 Hampstead
 London
 NW3 1QH
hampsteadlettingsusers@chestertons.co.uk
 02077941125
chestertons.co.uk

Additional tenant charges apply (fees apply to non-AST tenancies only)
 Tenancy Agreement Fee: £300
 References per Tenant/Guarantor: £60
 Inventory check (approx. £100 – £250 inc. VAT)
chestertons.co.uk/property-to-rent/applicable-fees



Lower Ground Floor

Approx Gross Internal Area 1026 Sq Ft - 95.32 Sq M

For Illustration Purposes Only - Not To Scale

www.goldlens.co.uk

Prepared for Chestertons

Ref. No. 001371

