



# Canfield Place

South Hampstead, NW6

£2,500 per month  
(£576.92 per week)

An excellent 2 bedroom 2 bathroom ground floor apartment with wood floors situated on a beautiful road in South Hampstead walking distance to the amenities of Finchley Road (Jubilee Line). Accommodation comprises spacious reception room, fitted kitchen, master bedroom with en-suite bathroom and further bedroom with en-suite shower room.

**CHESTERTONS**



# Canfield Place

## South Hampstead, NW6

- A Delightful Ground Floor Apartment
- 2 Bedrooms, 2 Bathrooms, Reception, Kitchen
- Wood Floors
- Situated in Beautiful Road in South Hampstead, Walking Distance to the Amenities of Finchley Road (Jubilee Line)





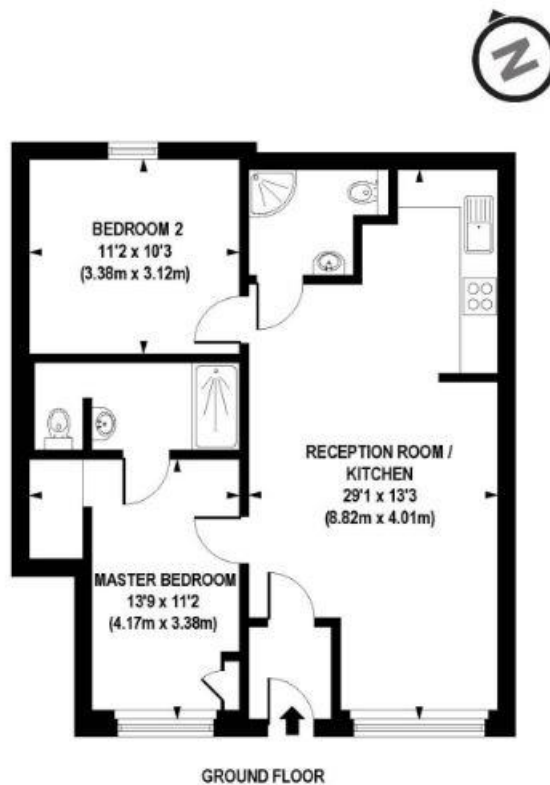
**Minimum Term:** 12 months  
**Deposit Required:** £2,884.62  
**Local Authority:** London Borough Of Camden  
**Council Tax Band:** D  
**EPC Rating:** E  
**Furnished**

| Energy Efficiency Rating                    |         |                         |
|---|---------|-------------------------|
|   | Current | Potential               |
| Very energy efficient - lower running costs |         |                         |
| <b>A</b> (92-100)                           |         |                         |
| <b>B</b> (81-91)                            |         |                         |
| <b>C</b> (69-80)                            |         | 80                      |
| <b>D</b> (55-68)                            |         |                         |
| <b>E</b> (39-54)                            | 48      |                         |
| <b>F</b> (21-38)                            |         |                         |
| <b>G</b> (1-20)                             |         |                         |
| Not energy efficient - higher running costs |         |                         |
| England, Scotland & Wales                   |         | EU Directive 2002/91/EC |

### Chestertons Hampstead Lettings

55-56 Hampstead High Street  
 Hampstead  
 London  
 NW3 1QH  
[hampsteadlettingsusers@chestertons.co.uk](mailto:hampsteadlettingsusers@chestertons.co.uk)  
 02077941125  
[chestertons.co.uk](https://www.chestertons.co.uk)

Additional tenant charges apply (fees apply to non-AST tenancies only)  
 Tenancy Agreement Fee: £300  
 References per Tenant/Guarantor: £60  
 Inventory check (approx. £100 – £250 inc. VAT)  
[chestertons.co.uk/property-to-rent/applicable-fees](https://www.chestertons.co.uk/property-to-rent/applicable-fees)



**APPROX. GROSS INTERNAL FLOOR AREA 694 sq. ft / 64.48 sq. m**

