



South Hill Park

London, NW3

£3,200 per month
(£738.46 per week)

An exceptionally spacious 2 double bedroom top (2nd) floor apartment with amazing views across Hampstead Heath and boasting wood floors in the reception situated in South Hill Park conservation area within walking distance to the shops and amenities.

CHESTERTONS



South Hill Park

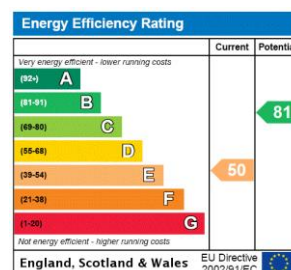
London, NW3

- An Exceptionally Spacious Top (2nd) Floor Apartment
- 2 Bedrooms, 2 Bathrooms, Reception, Open Plan Kitchen
- Amazing Views Across Hampstead Heath, Wood Floors
- Situated in South Hill Park Conservation Area, Within Walking Distance to the Shops/Amenities and Hampstead Heath Overground Station



An exceptionally spacious 2 double bedroom top (2nd) floor apartment with amazing views across Hampstead Heath ponds and boasting wood floors in the reception room. The property is situated in South Hill Park conservation area within walking distance to the shops and amenities and Hampstead Heath Overground Station. Accommodation comprises reception room and dining area, open plan kitchen, master bedroom with en-suite shower room, further double bedroom and family bathroom.

Minimum Term: 18 months
Deposit Required: £3,692.31
Local Authority: London Borough Of Camden
Council Tax Band: F
EPC Rating: E
Unfurnished

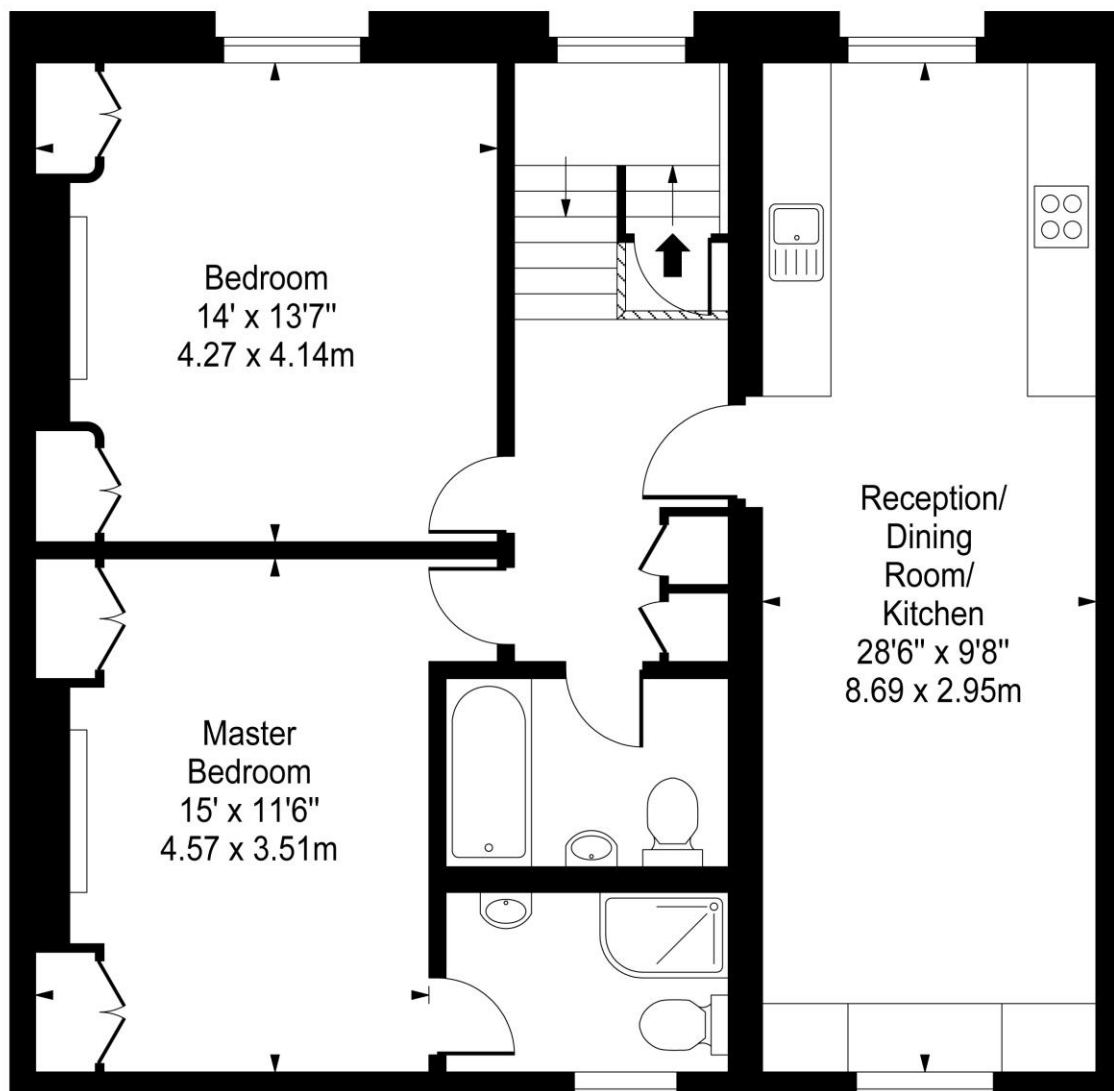
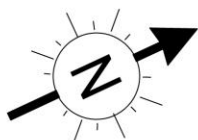


Chestertons Hampstead Lettings

55-56 Hampstead High Street
 Hampstead
 London
 NW3 1QH
hampsteadlettingsusers@chestertons.co.uk
 02077941125
chestertons.co.uk

Additional tenant charges apply (fees apply to non-AST tenancies only)
 Tenancy Agreement Fee: £300
 References per Tenant/Guarantor: £60
 Inventory check (approx. £100 – £250 inc. VAT)
chestertons.co.uk/property-to-rent/applicable-fees

South Hill Park, NW3



Second Floor

Approx Gross Internal Area **908 Sq Ft - 84.35 Sq M**

For Illustration Purposes Only - Not To Scale

www.goldlens.co.uk

Prepared for Chestertons

Ref. No. 006318K

