



Heath Drive

Hampstead, NW3

£4,000 per month
(£923.08 per week)

VIDEO TOUR AVAILABLE. A magnificent 3 bedroom lower ground floor apartment in excellent condition boasting wood floors throughout and communal gardens. The property is situated in this premier road walking distance to Hampstead Village (Northern Line) and easy access to the amenities of Finchley Road (Jubilee Line). Accommodation comprises spacious reception room, fully fitted kitchen, master bedroom with en-suite shower room, double bedroom, single bedroom/study, family bathroom.

CHESTERTONS



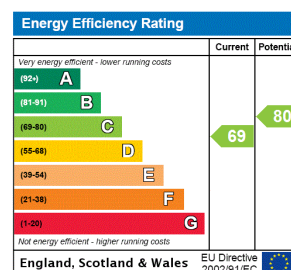
Heath Drive

Hampstead, NW3

- Lower Ground Floor Apartment
- 3 Bedrooms, 2 Bathrooms, Reception, Fully Fitted Kitchen
- Wood Floors Throughout, Communal Gardens
- Premier Road Walking Distance to Hampstead Village (Northern Line), Easy Access to the Amenities of Finchley Road (Jubilee Line)



Minimum Term: 12 months
Deposit Required: £4,615.38
Local Authority: London Borough Of Camden
Council Tax Band: F
EPC Rating: C
Unfurnished



Chestertons Hampstead Lettings

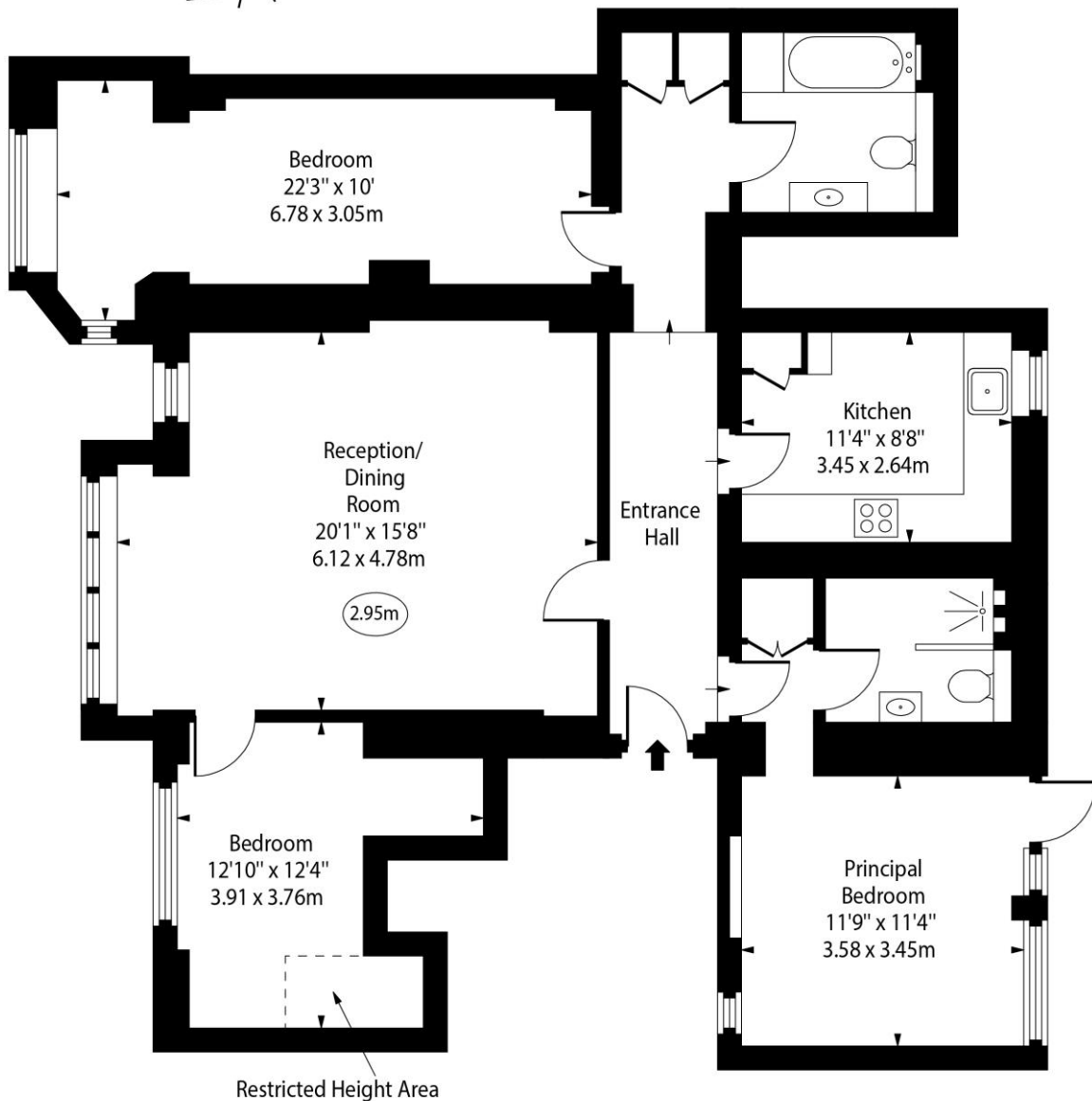
55-56 Hampstead High Street
 Hampstead
 London
 NW3 1QH
hampsteadlettingsusers@chestertons.co.uk
 02077941125
chestertons.co.uk

Additional tenant charges apply (fees apply to non-AST tenancies only)
 Tenancy Agreement Fee: £300
 References per Tenant/Guarantor: £60
 Inventory check (approx. £100 – £250 inc. VAT)
chestertons.co.uk/property-to-rent/applicable-fees

Heath Drive,
Hampstead, NW3



○ - Ceiling Height



Lower Ground Floor

Approx Gross Internal Area 1206 Sq Ft - 112.04 Sq M

Approx. Floor Area Including Restricted Heights 1238 Sq Ft - 115.01 Sq M

For Illustration Purposes Only - Not To Scale

www.goldlens.co.uk

Prepared for Chestertons

Ref. No. 022609E

