



Visage Apartments

Winchester Road, NW3

£2,800 per month
(£646.15 per week)

VIDEO TOUR AVAILABLE. A lovely 2 double bedroom ground floor apartment in this modern block in Swiss Cottage benefiting from wood floors throughout, lift and 24 hour security with concierge service.

CHESTERTONS



Visage Apartments

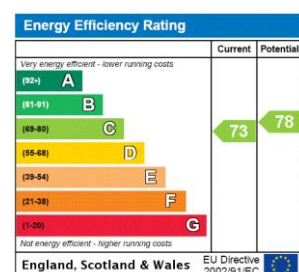
Winchester Road, NW3

- Lovely Ground Floor Apartment in Modern Purpose Built Block
- 2 Bedrooms, 2 Bathrooms, Open Plan Reception, Fully Fitted Kitchen
- 24 Hour Porter, Lift, Wood Floors,
- Situated Ideally for Swiss Cottage Underground Station (Jubilee Line)



VIDEO TOUR AVAILABLE. A lovely 2 bedroom ground floor apartment in this modern purpose built block comprising approximately 840 sq ft with wood floors throughout, floor to ceiling windows, lift and 24 hour porterage. The property is ideally situated close to Swiss Cottage Underground Station (Jubilee Line). Accommodation comprises fully fitted kitchen, open plan reception, master bedroom and en-suite bathroom, further double bedroom and spacious family bathroom.

Minimum Term: 18 months
Deposit Required: £3,230.77
Local Authority: Camden
Council Tax Band: F
EPC Rating: C
Part Furnished



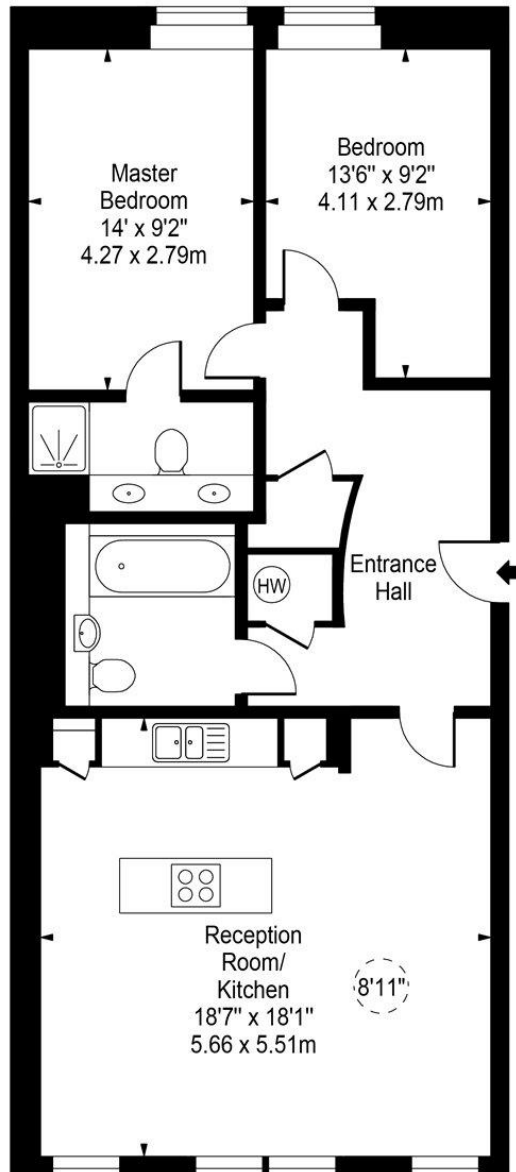
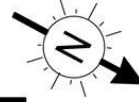
Chestertons Hampstead Lettings

55-56 Hampstead High Street
 Hampstead
 London
 NW3 1QH
hampsteadlettingsusers@chestertons.co.uk
 02077941125
chestertons.co.uk

Additional tenant charges apply (fees apply to non-AST tenancies only)
 Tenancy Agreement Fee: £300
 References per Tenant/Guarantor: £60
 Inventory check (approx. £100 – £250 inc. VAT)
chestertons.co.uk/property-to-rent/applicable-fees

Visage Apartments, Winchester Road, NW3

○ - Ceiling Height



Ground Floor

Approx Gross Internal Area 840 Sq Ft - 78.04 Sq M

For Illustration Purposes Only - Not To Scale

www.goldlens.co.uk

Prepared for Chestertons

Ref. No. 011670J

