



Jade Terrace

Marston Close, NW6

£6,100 per month
(£1,407.69 per week)

Charming 5-bed, 3-bath period terraced house with 1,821 sq ft. Unfurnished, garden, allocated parking. Convenient town location. Ideal for a family seeking a spacious and well-maintained property.



Jade Terrace

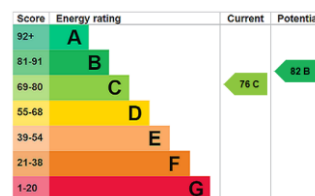
Marston Close, NW6

- 4 or 5 Bedroom
- Unfurnished
- Allocated Parking Space
- Split Over Three Floors
- 3 Bathrooms
- Guest WC
- 1 or 2 Reception Rooms



Nestled in a sought-after neighbourhood, this charming period terraced house offers a perfect blend of traditional elegance and modern convenience. Boasting a generous 5 bedrooms and 3 bathrooms spread across 1,821 sq ft, this property is ideal for families seeking space and style. The house features well-maintained interiors, a spacious garden for outdoor relaxation, and convenient allocated parking. Situated in a quiet residential area, this unfurnished home offers a peaceful retreat while being close to town amenities. With its versatile layout, this property is perfect for those looking for a comfortable and well-connected living space.

Minimum Term: 12 months
Deposit Required: £8,446.15
Local Authority: London Borough Of Camden
Council Tax Band: G
EPC Rating: C
Unfurnished



Chestertons Hampstead Lettings

55-56 Hampstead High Street
Hampstead
London
NW3 1QH
hampsteadlettingsusers@chestertons.co.uk
02077941125
chestertons.co.uk

Additional tenant charges apply (fees apply to non-AST tenancies only)
Tenancy Agreement Fee: £300
References per Tenant/Guarantor: £60
Inventory check (approx. £100 – £250 inc. VAT)
chestertons.co.uk/property-to-rent/applicable-fees

Jade Terrace, Marston Close, London, NW6

Approximate Gross Internal Floor Area = 171.0 sq m / 1841 sq ft

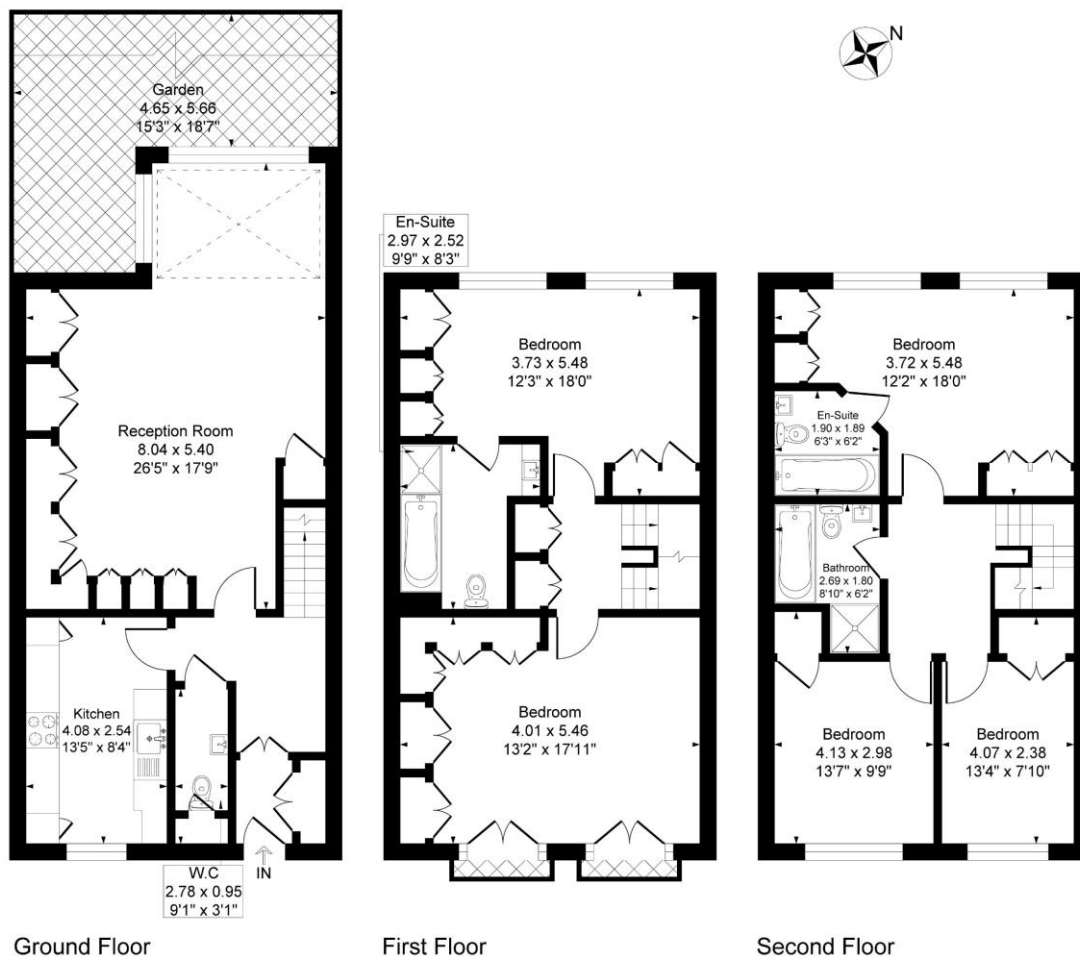


Illustration for identification purposes only, measurements are approximate, not to scale.

