



Briardale Gardens

Hampstead, NW3

£8,600 per month
(£1,984.62 per week)

A 5 bedroom family house over 3 floors only situated on a prime road in Hampstead Village. The property benefits from a private decked patio garden, surround sound, plasmas and an abundance of storage throughout. Accommodation comprises ground: reception room, large fully fitted eat-in kitchen, dining room with doors leading to private decked terrace and garden, guest cloakroom 1st floor: master bedroom with fitted wardrobes and large en-suite bathroom, 2 further large double bedrooms, family bathroom 2nd floor: 2 large double bedrooms, family bathroom.

CHESTERTONS



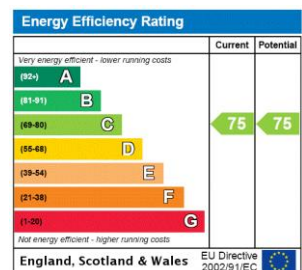
Briardale Gardens

Hampstead, NW3

- Family House Over 3 Floors
- 5 Bedrooms, 3 Bathrooms, Fully Fitted Kitchen Eat In Kitchen
- Private Decked Patio Garden, Surround Sound, Plasmas, Abundance of Storage
- Conveniently Located to Amenities of Hampstead and Finchley Road (Jubilee Line)



Minimum Term: 18 months
Deposit Required: £11,907.69
Local Authority: London Borough Of Camden
Council Tax Band: H
EPC Rating: C
Unfurnished

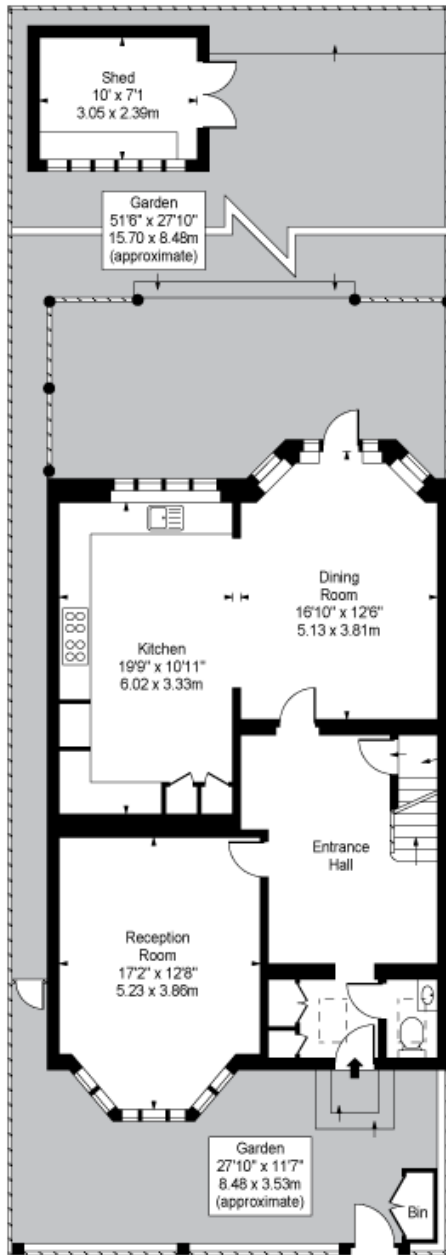


Chestertons Hampstead Lettings

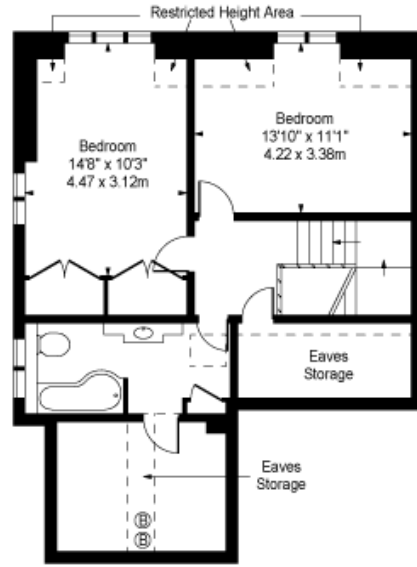
55-56 Hampstead High Street
 Hampstead
 London
 NW3 1QH
hampsteadlettingsusers@chestertons.co.uk
 02077941125
chestertons.co.uk

Additional tenant charges apply (fees apply to non-AST tenancies only)
 Tenancy Agreement Fee: £300
 References per Tenant/Guarantor: £60
 Inventory check (approx. £100 – £250 inc. VAT)
chestertons.co.uk/property-to-rent/applicable-fees

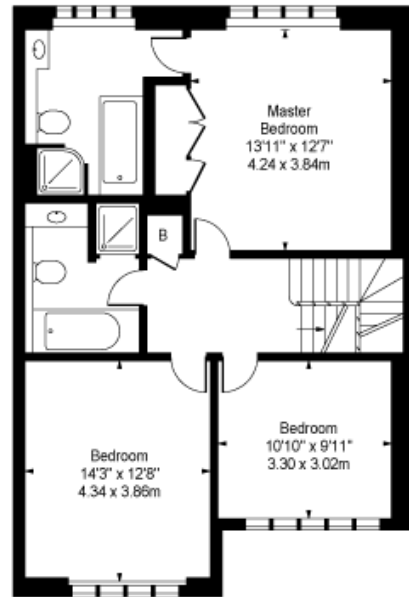
**Briardale Gardens,
Hampstead, NW3**



Ground Floor



Second Floor



First Floor

Approx Gross Internal Area 2345 Sq Ft - 217.85 Sq M
(Including Restricted Height Area & Eaves Storages)
(Excluding Shed)

For Illustration Purposes Only - Not To Scale
Floor Plan by www.bpmmediagroup.com
Ref. No. P52901

