



Byron Mews

London, NW3

£7,000 per month
(£1,615.38 per week)

Nestled in a quiet and secluded mews, this modern 4-bedroom house offers the perfect blend of convenience and tranquillity. With gated access, off street parking and a private garden.

CHESTERTONS



Byron Mews

London, NW3

- Parking On A Private Driveway
- Mews House
- Gated Development
- Pet Friendly
- 4 Bedrooms
- 2 Reception Rooms
- Unfurnished



Nestled in a quiet and secluded mews, this modern 4-bedroom house offers the perfect blend of convenience and tranquillity. With private parking and a charming garden, this unfurnished property is ideal for families looking for a peaceful retreat in the heart of town. The spacious interior boasts a contemporary design with high-quality finishes throughout, creating a comfortable and stylish living space.

The property is situated conveniently close to the amenities of Hampstead Heath and Hampstead Village.

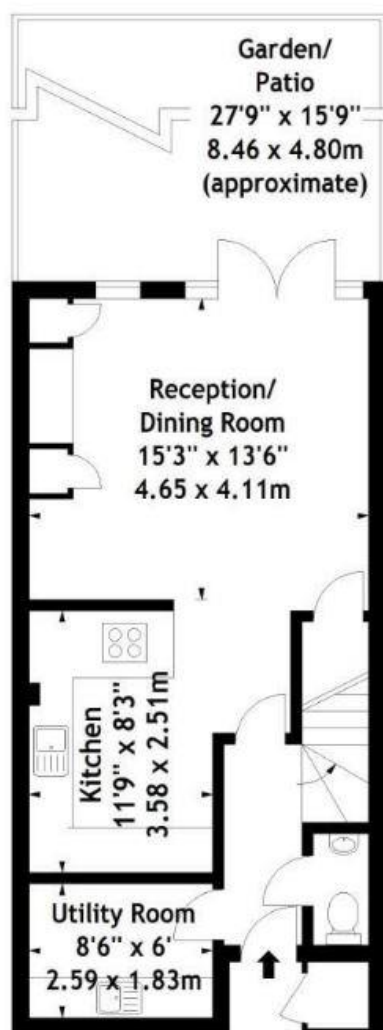
Minimum Term: 12 months
Deposit Required: £9,692.31
Local Authority: London Borough Of Camden
Council Tax Band: G
EPC Rating: C
Unfurnished

Energy Efficiency Rating		
	Current	Potential
Very energy efficient - lower running costs		
A (92-100)		
B (81-91)		
C (69-80)	73	83
D (55-68)		
E (39-54)		
F (21-38)		
G (1-20)		
Not energy efficient - higher running costs		
England, Scotland & Wales		EU Directive 2002/91/EC

Chestertons Hampstead Lettings

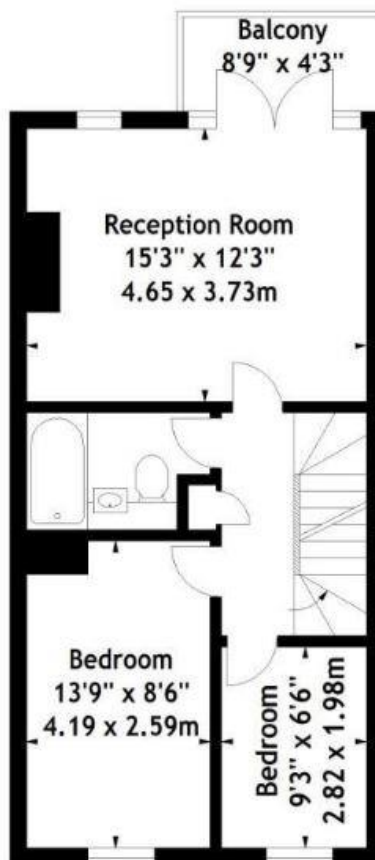
55-56 Hampstead High Street
 Hampstead
 London
 NW3 1QH
hampsteadlettingsusers@chestertons.co.uk
 02077941125
chestertons.co.uk

Additional tenant charges apply (fees apply to non-AST tenancies only)
 Tenancy Agreement Fee: £300
 References per Tenant/Guarantor: £60
 Inventory check (approx. £100 – £250 inc. VAT)
chestertons.co.uk/property-to-rent/applicable-fees

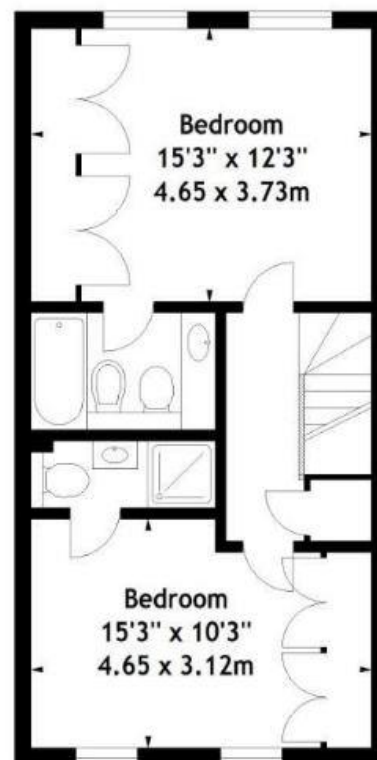


Ground Floor

Byron Mews, NW3
Approx. Gross Internal Area
1453 Sq Ft - 134.98 Sq M



First Floor



Second Floor

Measured in accordance with RICS guidelines. Every attempt is made to ensure accuracy, however all measurements are approximate. This floor plan is for illustrative purposes only and is not to scale.

© Datagraphy Ltd 2016
Photographs * Floorplans * Virtual Tours
Tel: 0845 643 4401 www.datagraphy.com

