



# Hampstead High Street

Hampstead, NW3

£3,100 per month  
(£715.38 per week)

\*VIDEO TOUR AVAILABLE\*. A modern and stylish 2 bedroom apartment on the 2nd floor of this Victorian building with wood floors throughout, situated in the heart of Hampstead Village within easy reach of all the restaurants and shopping amenities, a short walk to Hampstead Underground Station (Northern Line). The property comprises large entrance hall with storage cupboard, reception room, open plan fully fitted kitchen with dishwasher and washer/dryer, 2 bedrooms, smart bathroom with contemporary fittings.

CHESTERTONS





# Hampstead High Street

## Hampstead, NW3

- Stylish 2nd Floor Apartment in Period Conversion
- 2 Bedrooms, 1 Bathroom, Reception, Open Plan Fully Fitted Kitchen
- Wood Floors, Contemporary Fittings
- Heart of Hampstead Village, Short Walk to Shops/Restaurants of Hampstead (Northern Line)





**Minimum Term:** 12 months  
**Deposit Required:** £3,576.92  
**Local Authority:** London Borough Of Camden  
**Council Tax Band:** F  
**EPC Rating:** D  
**Furnished**

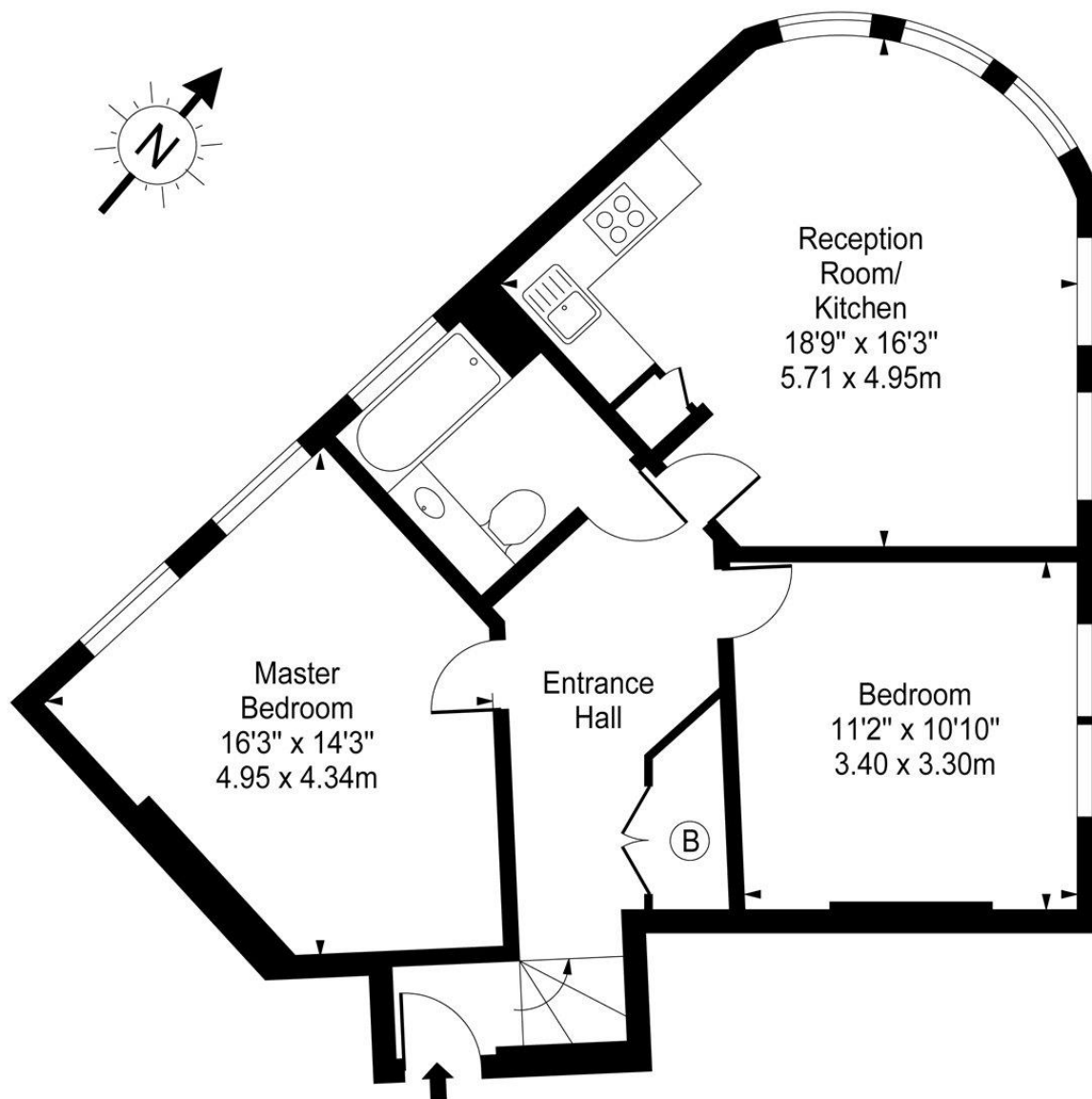
Energy Efficiency Rating		
	Current	Potential
Very energy efficient - lower running costs		
<b>A</b> (94-100)		
<b>B</b> (81-93)		
<b>C</b> (69-80)		
<b>D</b> (55-68)		
<b>E</b> (39-54)		58
<b>F</b> (21-38)	28	
<b>G</b> (1-20)		
Not energy efficient - higher running costs		
England, Scotland & Wales EU Directive 2002/91/EC		

### *Chestertons Hampstead Lettings*

55-56 Hampstead High Street  
 Hampstead  
 London  
 NW3 1QH  
[hampsteadlettingsusers@chestertons.co.uk](mailto:hampsteadlettingsusers@chestertons.co.uk)  
 02077941125  
[chestertons.co.uk](http://chestertons.co.uk)

Additional tenant charges apply (fees apply to non-AST tenancies only)  
 Tenancy Agreement Fee: £300  
 References per Tenant/Guarantor: £60  
 Inventory check (approx. £100 – £250 inc. VAT)  
[chestertons.co.uk/property-to-rent/applicable-fees](http://chestertons.co.uk/property-to-rent/applicable-fees)

## Hampstead High Street, NW3



Second Floor

Approx Gross Internal Area     **695 Sq Ft - 64.56 Sq M**

For Illustration Purposes Only - Not To Scale

[www.goldlens.co.uk](http://www.goldlens.co.uk)

Prepared for Chestertons

Ref. No. 003755J

