



# Heath Street

## Hampstead, NW3

£3,750 per month  
(£865.38 per week)

\*VIDEO TOUR AVAILABLE\*. A delightful 2 bedroom maisonette on the 1st/2nd floors with 2 private balconies, wood floors and stunning views across London in Hampstead Village (Northern Line). Accommodation comprises master bedroom with en-suite bathroom, further double double bedroom with en-suite shower room and access the balcony 2nd floor: reception room, fully fitted kitchen with direct access to the balcony, guest cloakroom.

**CHESTERTONS**



# Heath Street

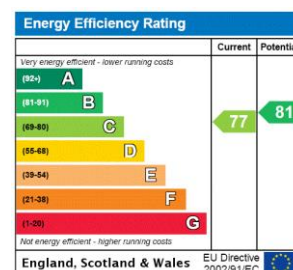
## Hampstead, NW3

- Beautiful Maisonette on 1st/2nd Floors
- 2 Bedrooms, 2 Bathrooms, Reception, Kitchen
- Wood Floors, 2 Balconies, Stunning Views
- Premier Location in Hampstead Village (Northern Line)





**Minimum Term:** 12 months  
**Deposit Required:** £4,326.92  
**Local Authority:** London Borough Of Camden  
**Council Tax Band:** F  
**EPC Rating:** C  
**Unfurnished**



### *Chestertons Hampstead Lettings*

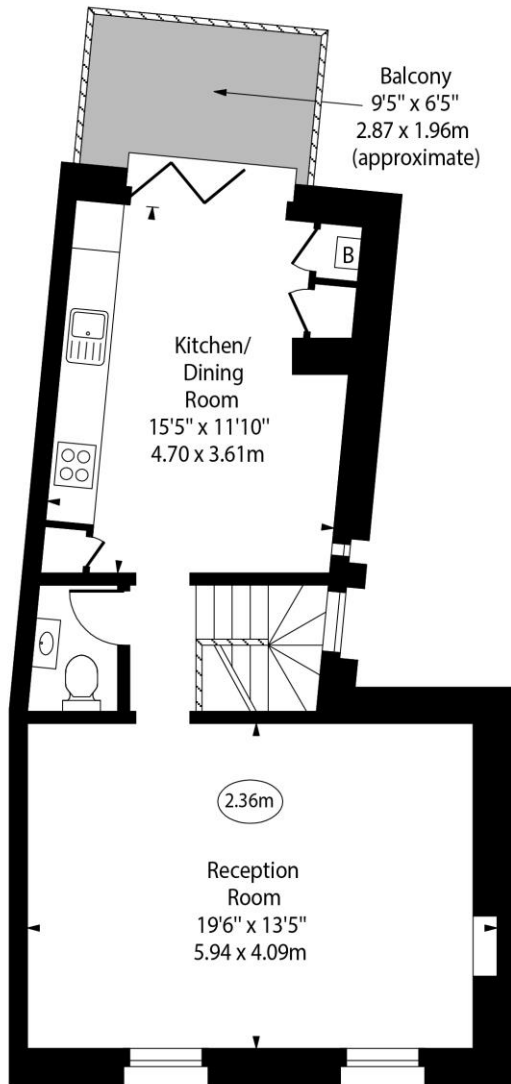
55-56 Hampstead High Street  
 Hampstead  
 London  
 NW3 1QH  
[hampsteadlettingsusers@chestertons.co.uk](mailto:hampsteadlettingsusers@chestertons.co.uk)  
 02077941125  
[chestertons.co.uk](http://chestertons.co.uk)

Additional tenant charges apply (fees apply to non-AST tenancies only)  
 Tenancy Agreement Fee: £300  
 References per Tenant/Guarantor: £60  
 Inventory check (approx. £100 – £250 inc. VAT)  
[chestertons.co.uk/property-to-rent/applicable-fees](http://chestertons.co.uk/property-to-rent/applicable-fees)

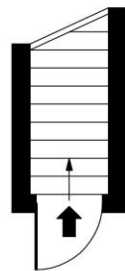
Heath Street,  
Hampstead, NW3



○ - Ceiling Height

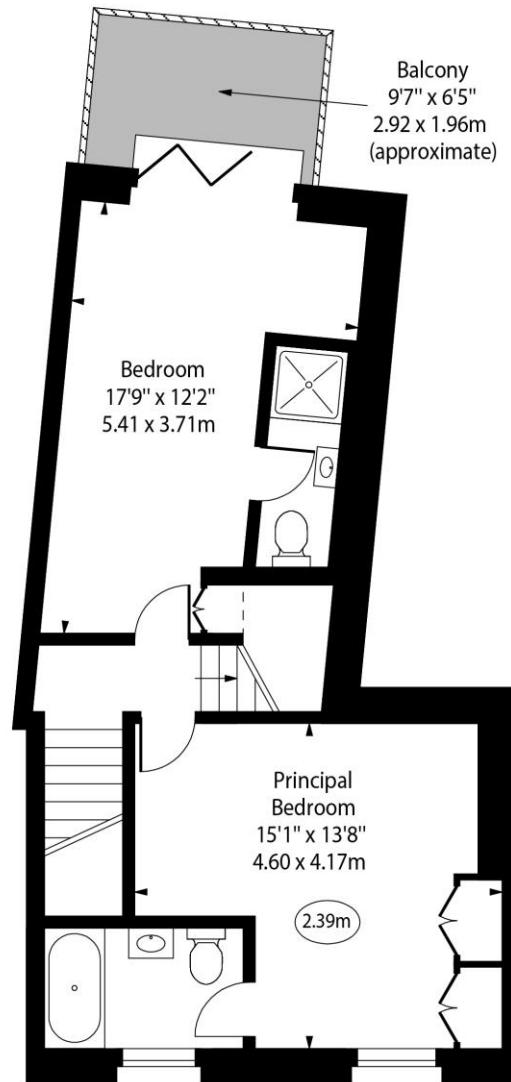


Second Floor



Ground Floor

Approx Gross Internal Area



First Floor

1040 Sq Ft - 96.62 Sq M

For Illustration Purposes Only - Not To Scale

[www.goldlens.co.uk](http://www.goldlens.co.uk)

Ref. No. 021364K

