



Compayne Gardens

South Hampstead, NW6

£2,995 per month
(£691.15 per week)

A luxurious 2 bedroom 2nd floor apartment in period building which boasts a private balcony, a grand entrance hall and access to communal gardens. The property boasts wood floors throughout, a private balcony and communal gardens and is situated in this excellent location in the heart of West Hampstead, short walk to the shopping amenities of West Hampstead and Underground/Overground Stations. Accommodation comprises reception room, open plan fully fitted kitchen, 2 bedrooms, bathroom. Council Tax band to be determined.



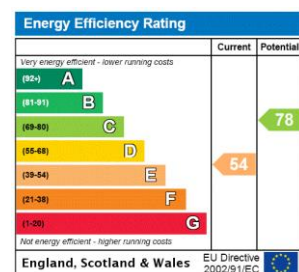
Compayne Gardens

South Hampstead, NW6

- Luxurious 2nd Floor Apartment in Period Building
- 2 Bedrooms, 1 Bathroom, Reception, Kitchen
- Private Balcony, Grand Entrance Hall, Communal Gardens, Wood Floors Throughout
- Situated in This Excellent Location in the Heart of West Hampstead, Short Walk to the Shopping Amenities of West Hampstead and Underground/Overground Stations



Minimum Term: 12 months
Deposit Required: £3,455.77
Local Authority: London Borough Of Camden
Council Tax Band: NA
EPC Rating: E
Unfurnished

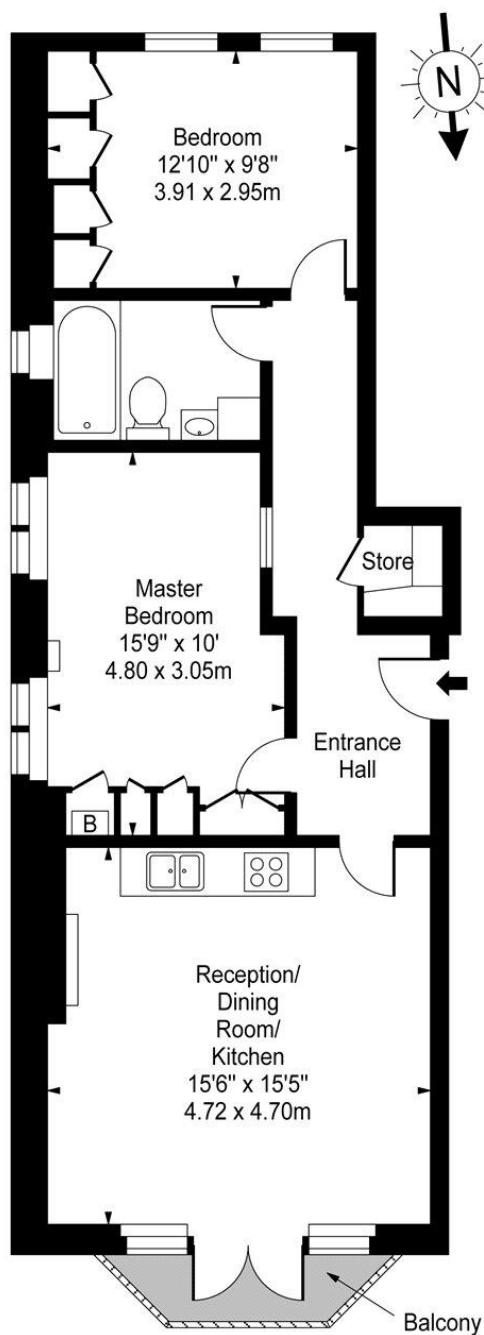


Chestertons Hampstead Lettings

55-56 Hampstead High Street
Hampstead
London
NW3 1QH
hampsteadlettingsusers@chestertons.co.uk
02077941125
chestertons.co.uk

Additional tenant charges apply (fees apply to non-AST tenancies only)
Tenancy Agreement Fee: £300
References per Tenant/Guarantor: £60
Inventory check (approx. £100 – £250 inc. VAT)
chestertons.co.uk/property-to-rent/applicable-fees

Compayne Gardens, NW6



Second Floor

Approx Gross Internal Area **708 Sq Ft - 65.77 Sq M**

For Illustration Purposes Only - Not To Scale

www.goldlens.co.uk

Prepared for Chestertons

Ref. No. 003087

