



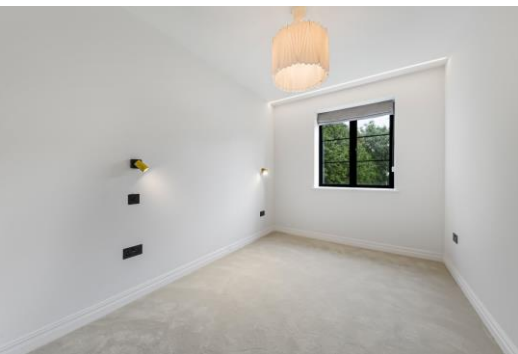
# Hampstead Gardens

London, NW11

£2,847 per month  
(£657 per week)

A brand new beautifully presented split level two bedroom apartment situated on the top floor conveniently situated between Temple Fortune and Golders Green. This superb property offers 1038sq ft of bright and spacious accommodation. This flat comprises a reception room/dining room, two bedrooms and a family bathroom.

**CHESTERTONS**



# Hampstead Gardens

London, NW11

- Split Over Two Floors
- 2 Bedrooms
- Brand New Refurbishment
- Great Size
- Unfurnished





**Minimum Term:** 12 months  
**Deposit Required:** £3,285.00  
**Local Authority:** London Borough of Barnet  
**Council Tax Band:** NA  
**EPC Rating:** C  
**Unfurnished**

Score	Energy rating	Current	Potential
92+	A		
81-91	B		
69-80	C	80 C	80 C
55-68	D		
39-54	E		
21-38	F		
1-20	G		

### Chestertons Hampstead Lettings

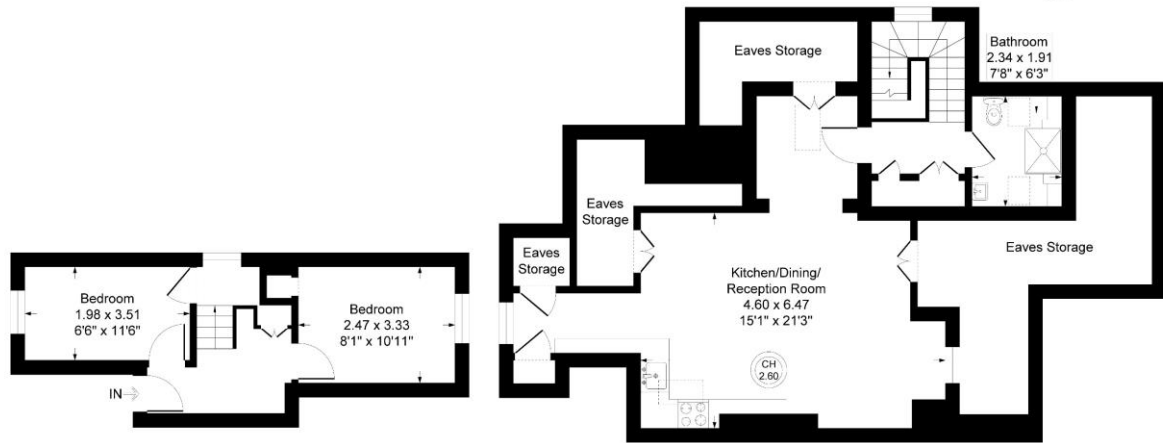
55-56 Hampstead High Street  
 Hampstead  
 London  
 NW3 1QH  
[hampsteadlettingsusers@chestertons.co.uk](mailto:hampsteadlettingsusers@chestertons.co.uk)  
 02077941125  
[chestertons.co.uk](https://www.chestertons.co.uk)

Additional tenant charges apply (fees apply to non-AST tenancies only)  
 Tenancy Agreement Fee: £300  
 References per Tenant/Guarantor: £60  
 Inventory check (approx. £100 – £250 inc. VAT)  
[chestertons.co.uk/property-to-rent/applicable-fees](https://www.chestertons.co.uk/property-to-rent/applicable-fees)

## Hampstead Gardens, London, NW11

Approximate Gross Internal Floor Area = 96.4 q m / 1038 sq ft (Including Eaves Storage)

Approximate Gross Internal Floor Area = 69.1 q m / 744 sq ft (Excluding Eaves Storage)



First Floor

Second Floor

Illustration for identification purposes only, measurements are approximate, not to scale.

